

Tusla Equality Diversity & Inclusion Charter

Core Message

All colleagues must work together to ensure that:

- They promote an inclusive and supportive environment
- Tusla is compliant with the Employment Equality Act
- There is a zero-tolerance culture to any form of discrimination

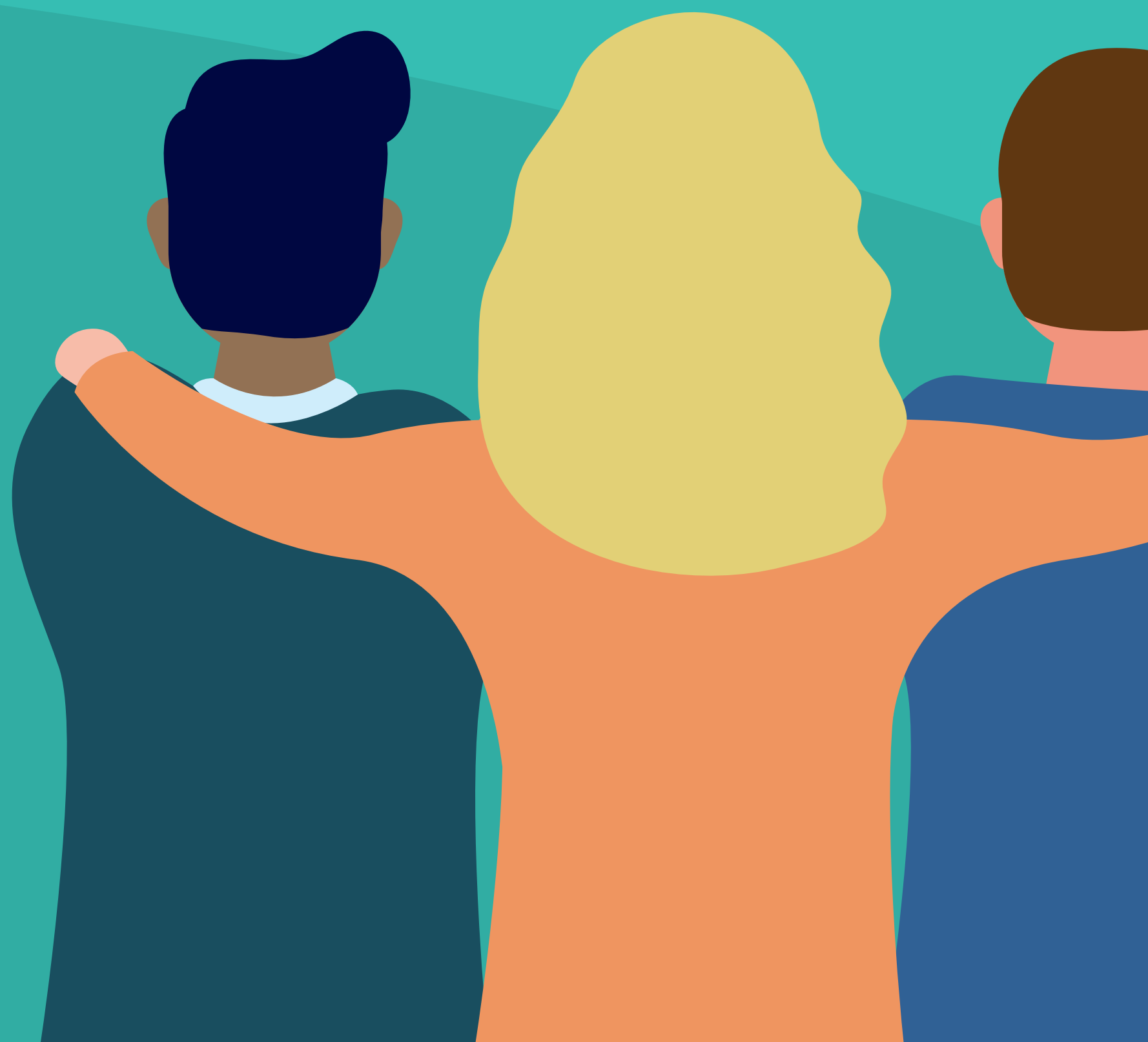
Values

Trust

Kindness

Respect

Empowerment



Tusla's Health and Wellbeing Department are here to help, contact eap@tusla.ie or phone **086 143 8390** if you have any questions.

Please find more details on the TEDI Charter in our brochure which is hosted on the Tusla Hub / SharePoint