A vertical collage of five images on the left side of the slide. From top to bottom: 1. A young boy in a plaid shirt playing with colorful toys. 2. A man smiling with a young girl sitting on his shoulders. 3. A young girl in a red shirt with colorful handprints on her hands. 4. A young boy wearing a helmet riding a bicycle on a path. 5. Two women sitting on a couch, looking at a laptop screen together.

# Outcomes for Children National Data & Information Hub

**Peggy Ryan, Sheila Moore**  
**TUSLA West, Information Managers**  
**15<sup>th</sup>, 16<sup>th</sup> November 2017**

## BACKGROUND / CONTEXT

With the government policy framework (BOBF) and TUSLA's strategic and corporate plan an Agency decision was made in Q4 2015 to:

- Consult with the DCYA to establish in principle and build upon the legacy and benefits from the CAWT project.
- Host an open workshop to demonstrate the Northern Ireland model and discuss the potential use of a similar model within TUSLA.

# BETTER OUTCOMES BRIGHTER FUTURES

The national policy framework for children & young people 2014 - 2020

Active & Healthy

Achieving

Safe

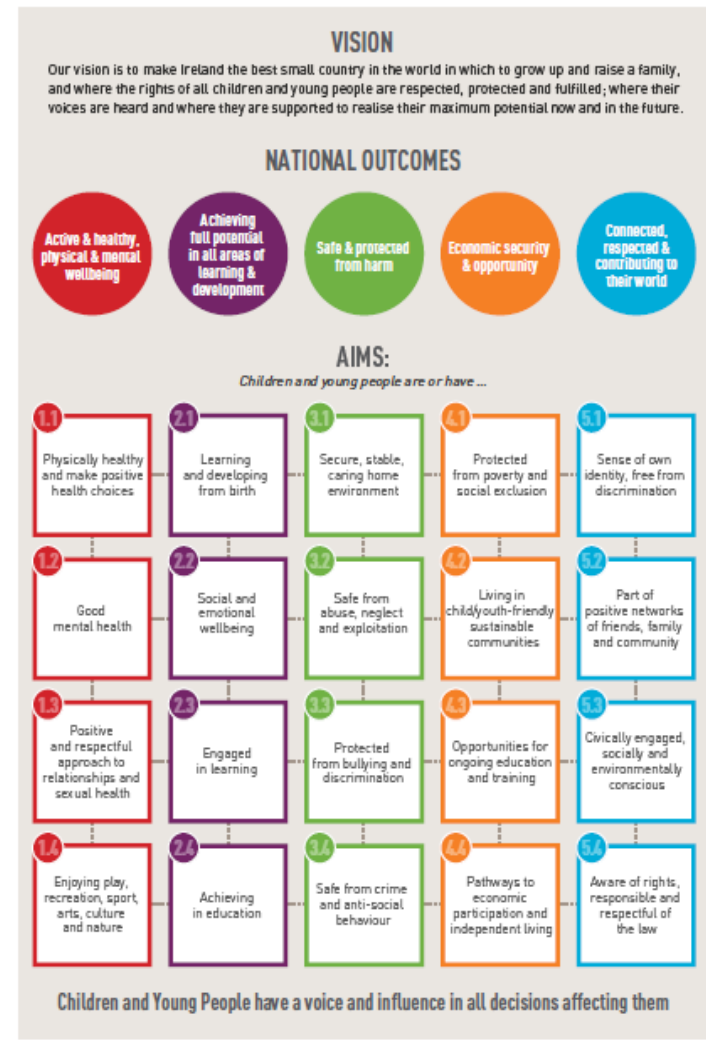
Economic Security

Connected & Respected



## Five national outcomes for children and young people

This Policy Framework has adopted an outcomes approach based on five national outcomes for children and young people. These outcomes are interconnected and reinforcing. Four aims have been identified for each outcome (see diagram below)



## Project Scope

In Q1, 2016 TUSLA and the DCYA agreed to the establishment of a new project ‘Outcomes for Children National Data & Information Hub’.

The funding was agreed and ring fenced (AP PPFs grant and DCYA) for a pilot to include 11 CYPSCs in Year 1.

Following the implementation within the initial 11 CYPSCs a roll out plan will be developed for all remaining CYPSCs.

The Hub will be available for TUSLA service planning, research and other stakeholder use.

The project offers a sustainable opportunity to provide a national standardised technical solution for mapping outcomes, indicators and services for children and young people.

## 11 CYPSCs

- Donegal
- Sligo/Leitrim
- South Dublin
- Dublin City South
- Dun Laoghaire/Rathdown
- Fingal
- Dublin North City
- Kildare
- Wicklow
- Waterford
- Wexford



## CYPSCs

To date, significant effort has been made by CYPSCs in order to collate and analyse data sets in order to produce Children & Young People's Plans.

It has been identified that there is a need for children & young people's planning documents to be updated regularly so that data informed decisions can be taken annually.

As previously outlined the proposed national Data & Information Hub will provide one national centralised open data hub that will host agreed and relevant published data to ensure system users have access to quality information that will inform children & young people's services planning.

The Hub will be updated on an annual basis where feasible thus providing the most up to date published information available.

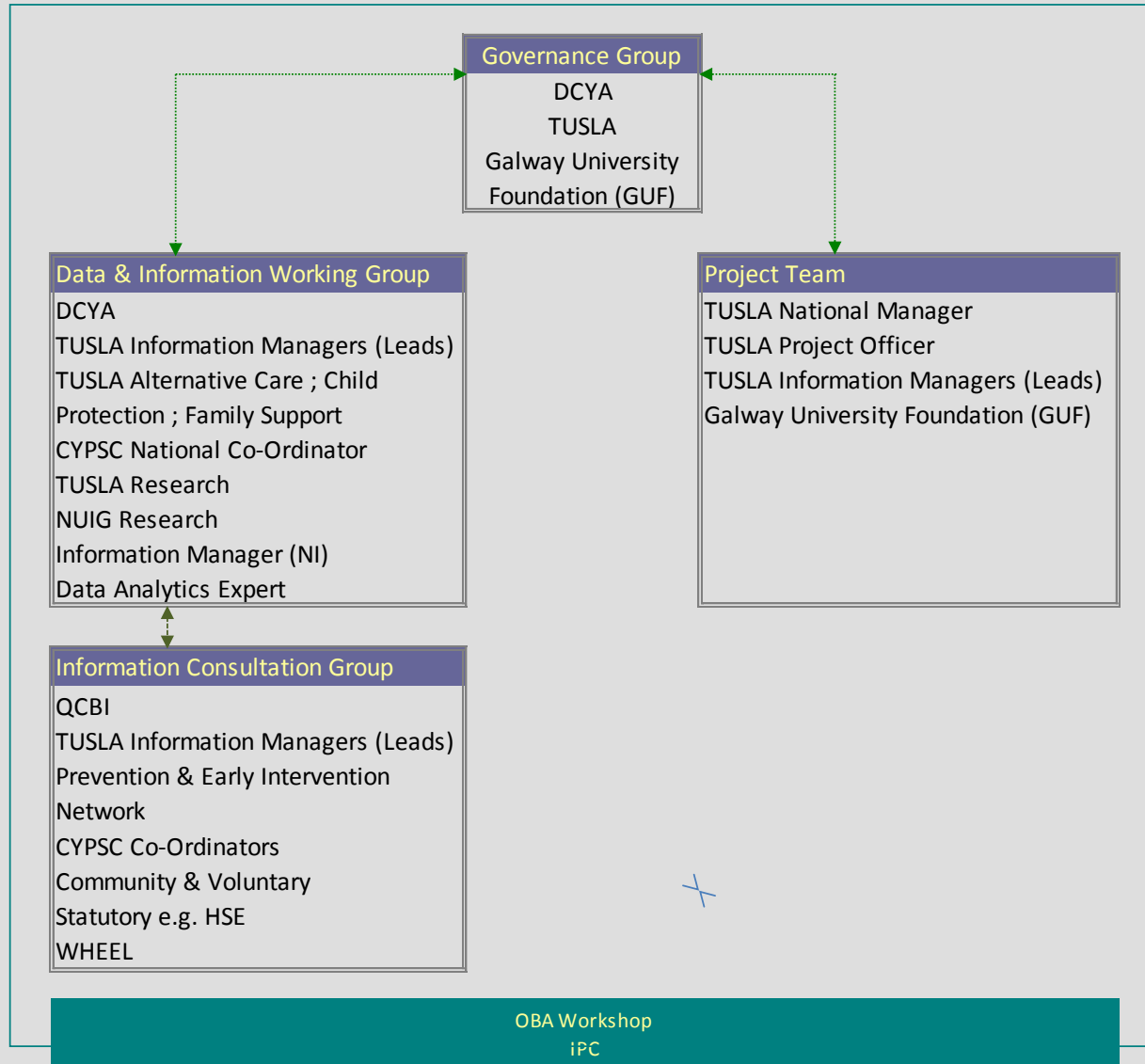
## Project Aims & Objectives

- Incrementally build a centralised Data Hub that will host a wide range of published data from various agencies.
- Agree a set of indicators referencing the recently developed national set of indicators (DCYA), framed against the five national outcomes BOBF.
- Use the validated and quality assured datasets from the agencies to populate the agreed indicator set.
- Overlay the indicators with additional information as required for planning purposes e.g. child population overlaid with child health indicators and / or child health service location details.
- Develop robust data trend analysis and information dissemination capacity at area, regional and national levels.

## Project Aims & Objectives

- Produce area specific Report Cards and / or Dashboards.
- Ensure the system supports the operational planning of TUSLA at area, regional and national levels.
- Train and support both TUSLA personnel and relevant CYPSC partners at national and local level in the use and application of the system to underpin and optimise children's services planning.
- Inform the enhancement of both quantitative and qualitative data collection to support TUSLA and DCYA research agendas and meet corporate objectives regarding capacity as a learning organisation.

# Project Structure



## Plan for 2018

- **Sign off on the agreed prototype for the deployment of the Hub.**
- **Roll out of the OBA training.**
- **Implementation / Training of the Hub in the initial 11 CYPSC sites.**
- **Further indicator development in conjunction with the Information Consultation group.**
- **Review and evaluate the project to include the development of an implementation plan for embedding the Hub.**

# Outcomes Based Accountability (OBA)

It has been agreed that the principles and methodology of Outcomes Based Accountability (OBA) will underpin the utilisation of the data within the Hub.

As part of the project implementation a series of workshops will be delivered in 2018.

How much did we do?  How well did we do?  Is anyone better off?  
**Measure** **Trend** **Analyse**



## Data & Information Hub Prototype (Nov. 17)

### Screen Shots from the Prototype (Demo available at the stand)

# Active & Healthy

The aims are that all children and young people are physically healthy and able to make positive health choices, have good mental health, have a positive and respectful approach to relationships and sexual health, and that their lives are enriched through the enjoyment of play, recreation, sports, arts, culture and nature.

gettyimages®  
Image Source

[LEARN MORE](#)



## Outcomes for Children Data & Information Hub

Our vision is to make Ireland the best small country in the world in which to grow up and raise a family, and where the rights of all children and young people are respected, protected and fulfilled; where their voices are heard and where they are supported to realise their maximum potential now and in the future.

[VIEW DEMOGRAPHICS](#)

### Child Protection & Welfare

Children First

### Alternative Care Services

Foster Care

### Family & Community Support

Family Support

### Educational Welfare Services

Statutory Services

### Domestic, Sexual & Gender Based Violence

Local Services for Women

# Safe and protected from harm

OVERVIEW

ALL IRELAND ATLAS - TUSLA AREAS

ALL IRELAND ATLAS - COUNTIES

REPORTS

Keeping children and young people safe and protected from harm is the responsibility of everyone in our society. Children and young people themselves must be educated and made aware of dangers and how to protect themselves from harm and harmful or risky behaviour.

The aims are that all children and young people have a secure, stable and caring home environment; that they are safe from abuse, neglect and exploitation; that they are protected from bullying and discrimination; and that they are safe from crime and antisocial behaviour.

All children and young people need safeguarding. The Government recognises, however, that specific groups of children and young people are particularly at risk and so need additional support and protection.

## Child Protection & Welfare

Children First  
Definitions of child abuse  
Advice, Guidance and Support  
Reporting Concerns

## Alternative Care Services

Foster Care  
Residential Care  
Registration and Inspection Service  
Social Care

## Family & Community Support

Family Support  
Guidance Documents (incl Meitheal Forms)  
Family Resource Centres  
Participation Resources

## Educational Welfare Services

Statutory Services  
School Support Services under the DEIS initiative  
Information for Parents and Guardians

## Domestic, Sexual & Gender Based Violence

Local Services for Women  
Sexual Assault Treatment Units (SATU)  
Publications

# Safe and protected from harm

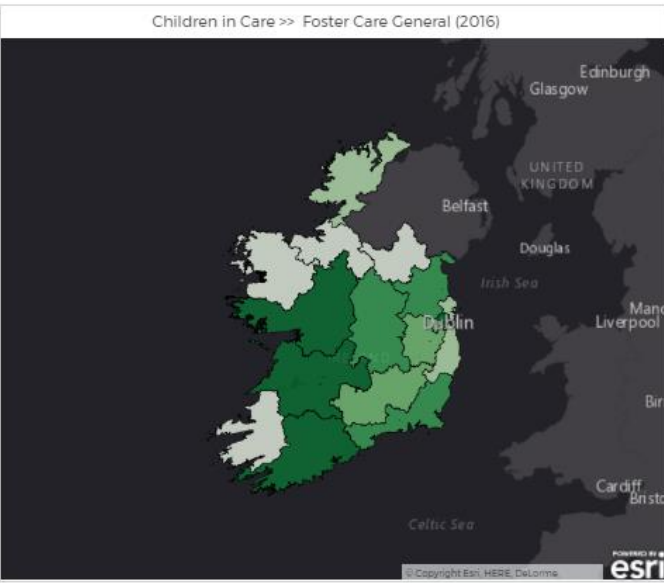


- OVERVIEW
- ALL IRELAND ATLAS - TUSLA AREAS
- ALL IRELAND ATLAS - COUNTIES
- REPORTS

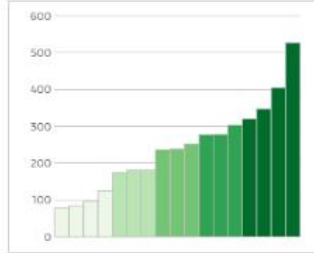
Choose Data...

- Children in Care
  - Foster Care General
    - 2016**
    - 2015
    - 2014
  - Foster Care Relative
  - Other

- ISA - April 14
- 78.0 - 134.8
- 134.9 - 203.0
- 203.1 - 267.0
- 267.1 - 316.6
- 316.7 - 527.0
- Primary Schools 2016-2017
- Post-Primary Schools 2016-



Name	Value
Carlow/Kilkenny/South Tipperary	236
Cavan/Monaghan	125
Cork	527
Donegal	174
Dublin North	181
Dublin North City	347
Dublin South Central	238
Dublin South East/Wicklow	181
Dublin South West/Kildare/West Wicklow	252
Galway/Roscommon	320
Kerry	84



Dublin Mid Leinster	949
Dublin North East	930
National Total	4,102
South	1,150
West	1,073

SHARE

# Safe and protected from harm

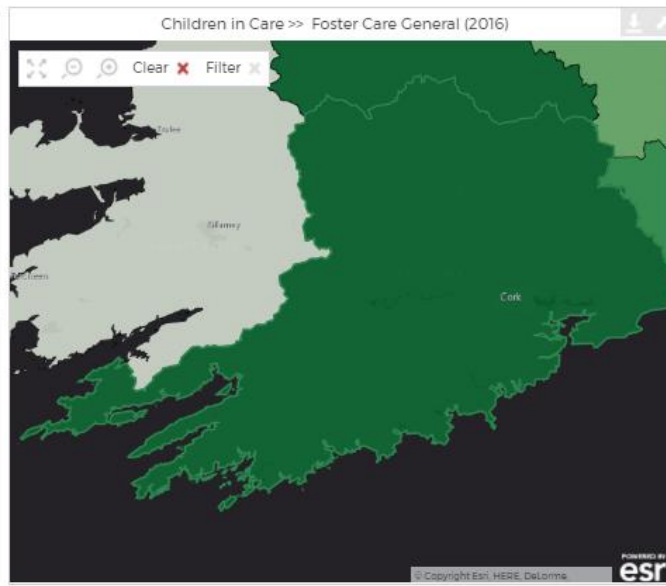


- OVERVIEW
- ALL IRELAND ATLAS - TUSLA AREAS
- ALL IRELAND ATLAS - COUNTIES
- REPORTS

Choose Data...

- Children in Care
  - Foster Care General
    - 2016
    - 2015
    - 2014
  - Foster Care Relative
  - Other

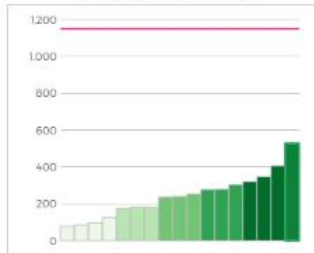
ISA - April 14  
 78.0 - 134.8  
 134.9 - 203.0  
 203.1 - 267.0  
 267.1 - 316.6  
 316.7 - 527.0  
 Primary Schools 2016-2017  
 Post-Primary Schools 2016-



Name	Value
Carlow/Kilkenny/South Tipperary	236
Cavan/Monaghan	125
<b>Cork</b>	<b>527</b>
Donegal	174
Dublin North	181
Dublin North City	347
Dublin South Central	238
Dublin South East/Wicklow	181
Dublin South West/Kildare/West Wicklow	252
Galway/Roscommon	320
Kerry	84

Clear ✕ Filter ✕

Dublin Mid Leinster	949
Dublin North East	930
National Total	4,102
<b>South</b>	<b>1,150</b>
West	1,073



[Cork Report](#)

SHARE

# Safe and protected from harm

Choose Data...

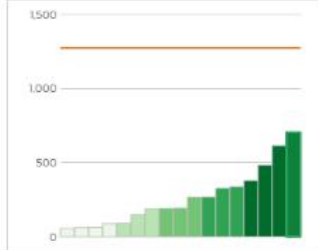
- Referrals - Abuse
  - Emotional Abuse
  - Neglect
  - Physical Abuse
    - 2016
    - 2015
    - 2014

- ISA - April 14
- 56.0 - 87.4
- 87.5 - 189.2
- 189.3 - 267.6
- 267.7 - 369.6
- 369.7 - 704.0
- Primary Schools 2016-2017
- Post-Primary Schools 2016-



Name	Value
Carlow/Kilkenny/South Tipperary	191
Cavan/Monaghan	87
Cork	614
Donegal	56
<b>Dublin North</b>	<b>704</b>
Dublin North City	146
Dublin South Central	268
Dublin South East/Wicklow	193
Dublin South West/Kildare/West Wicklow	267
Galway/Roscommon	188
Kerry	89

Dublin Mid Leinster	1210
<b>Dublin North East</b>	<b>1273</b>
National Total	4,450
South	1,272
West	695



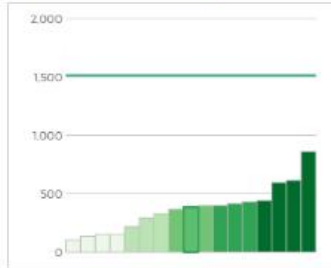
[Dublin North Report](#)

SHARE

Choose Data...

- Other
- Residential General
- Residential Out of State
- Residential Special Care
- Total
  - 2016
  - 2015
  - 2014

ISA - April 14  
 103.0 - 164.8  
 164.9 - 343.2  
 343.3 - 396.6  
 396.7 - 439.4  
 439.5 - 860.0  
 Primary Schools 2016-2017  
 Post-Primary Schools 2016-



Name	Value
Dublin South Central	384
Dublin South East/Wicklow	291
Dublin South West/Kildare/West Wicklow	442
Galway/Roscommon	414
Kerry	152
Louth/Meath	396
Mayo	135
Mid West	596
Midlands	397
Sligo/Leitrim/West Cavan	103
Waterford/Wexford	429

Dublin Mid Leinster	1,514
Dublin North East	1,490
National Total	6,275
South	1,807
West	1,464

[Dublin South Central Report](#)

SHARE

Child Protection & Welfare

- Children First
- Definitions of child abuse
- Advice, Guidance and Support
- Reporting Concerns

Alternative Care Services

- Foster Care
- Residential Care
- Registration and Inspection Service
- Special Care

Family & Community Support

- Family Support
- Guidance Documents (incl Meitheal Forms)
- Family Resource Centres
- Participation Resources

Educational Welfare Services

- Statutory Services
- School Support Services under the DEIS initiative
- Information for Parents and Guardians
- Information for Schools (inc Absence Reporting)

Domestic, Sexual & Gender Based Violence

- Local Services for Women
- Sexual Assault Treatment Units (SATU)
- Publications

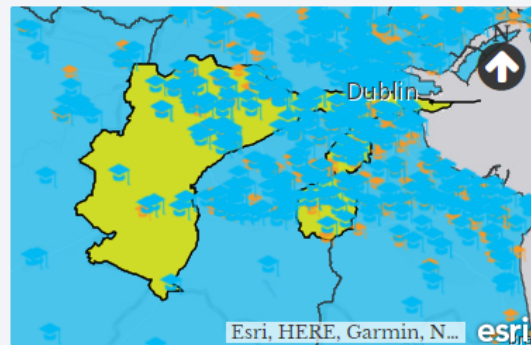
# Dublin South Central



Keeping children and young people safe and protected from harm is the responsibility of everyone in our society. Children and young people themselves must be educated and made aware of dangers and how to protect themselves from harm and harmful or risky behaviour.

In **Dublin South Central** in 2016 there were **384** children in care.

This **demo report** shows how you can highlight some of your data using InstantAtlas Report Builder - it has basic data for children in care, social work referrals and schools.



## Children in Care

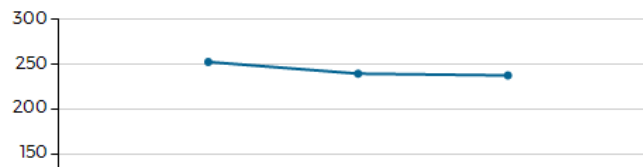
Children in Care in Ireland - how does Dublin South Central fare? | Total | 2016



Children in Care in Dublin South Central | 2016



Children in Care in Dublin South Central | 2014 - 2016



**TUSLA** An Ghníomhaireacht um Leanaí agus an Teaghlach  
Child and Family Agency

An Roinn Leanaí agus Ciníthaí Óige  
Department of Children and Youth Affairs

CYPSC  
CHILDREN'S YOUTH SERVICES CENTRE

HEALTHY ACHIEVING SAFE SECURITY CONNECTED

# Active & Healthy

The aims are that all children and young people are physically healthy and able to make positive health choices, have good mental health, have a positive and respectful approach to relationships and sexual health, and that their lives are enriched through the enjoyment of play, recreation, sports, arts, culture and nature.

gettyimages  
Image Source

LEARN MORE

**Outcomes for Children Data & Information Hub**  
Our vision is to make Ireland the best small country in the world in which to grow up and raise a family, and where the rights of

Thank You  
Peggy Ryan, Sheila Moore  
TUSLA West, Information Managers