

# Tusla Parenting Support Strategy (2022-2027) | Implementation Plan - Year 1

## Tusla (Corporate Plan 2021 - 2023)

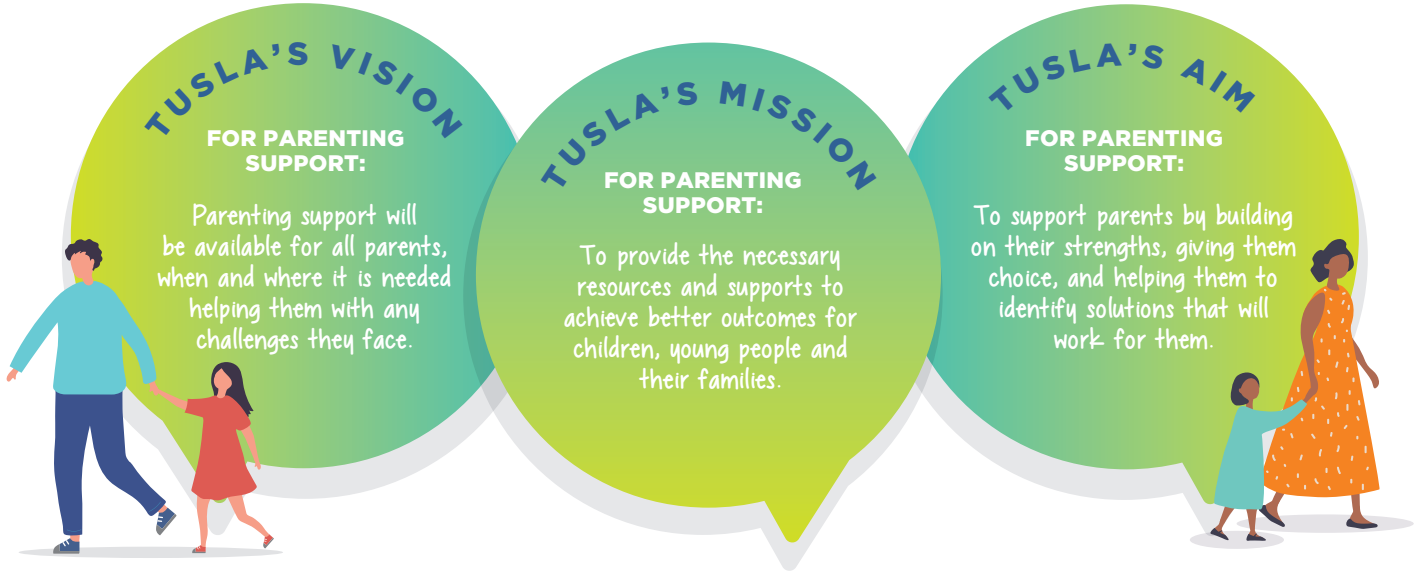
### OUR VISION

Families & communities are empowered and strengthened to keep children safe and nurtured, recognising a child's right to protection, stability and the support of a family and community network.

### OUR MISSION

Dedicated and committed to working in partnership with children, families & communities to ensure that children in need or at risk of harm are supported, protected and connected to people who can safeguard and promote their wellbeing throughout their lives.

## Parenting Strategy 2022 - 2027



## Key initiatives 2022 - 2023

**Parental Participation Seed Funding**

**Traveller Pilot Parent Support Programme**

**Parenting Forum:**

- Toolkit
- Pilot sites

**Development of bespoke parenting support for parents living in IPAS centres**

**Scaling Proven Models:**

- Expansion of Infant Mental Health (IMH) Networks

**Awareness & Promotion:**

- Parenting24seven
- Parenting e-learning module

**Home Visiting:**

- Expansion of Preparing for Life (PFL) & Implementation of Community Families

**The Children & Young People Services Committees (CYPSC) will also continue to co-ordinate Parenting Supports in every county in Ireland**

**Parenting Support Champions Project:**

- PSCs Review
- PSCs Symposium
- Parenting Learning initiatives
- PSCs Training

