

# TÚSLA

An Ghníomhaireacht um  
Leanaí agus an Teaghlach  
Child and Family Agency

## Report and Summary of 5<sup>th</sup> National Prevention, Partnership and Family Support Workshop

“Conversations Across the Continuum  
of Care, Connecting to Meet Needs  
and Achieve Outcomes”

15<sup>th</sup> and 16<sup>th</sup> November 2017  
Hotel Kilkenny



## Acknowledgements

The organisers of the National Workshop for Prevention, Partnership and Family Support (PPFS) 2017 - 'Conversations across the Continuum of Care, Connecting to meet Needs and Achieve Outcomes' are grateful to all contributors and attendees for taking the time to prepare for, travel to and engage in the event. Tusla Workshop Planning Group would like to thank our funders, the Atlantic Philanthropies, and acknowledge the contribution of Ossory Youth and The Drum Project for the wonderful musical acts showcased at the workshop. We would also like to sincerely thank the Child and Family Support Networks who made such an effort to present engaging, dynamic and innovative practice examples of Meitheal and of Child and Family Support Networks' work in practice and all the exhibitors who showcased at the event.

This report was compiled by Catherine O'Donohoe, PPFS Workshop Lead and Regional Implementation Manager for the South and Ann Butler, National Support Officer, PPFS. The evaluation summary was compiled by Lisa O'Reilly and Nicola Kane, Workforce Learning and Development.

## Contents Day 1

Introduction to the Prevention, Partnership and Family Support Workshop 2017 .....	3
Welcome - Norah Gibbson, Chairperson, Tusla .....	4
Opening Address - Fred McBride, Chief Executive, Tusla .....	4
Session 1 - Prevention and Early Intervention Kevin Webster, Senior PPFS Dublin South East, Eimear Fisher - Assistant Secretary, DCYA, Fergal Landy RIM .....	5
Regional Workshops - Demonstrating good outcomes for children and families through the Meitheal model and Child and Family Support Networks - Practitioners talking about Positive Impact - Tusla National Research Office - Bernard Barrett .....	6
UNESCO Child and Family Research Centre, NUIG - Dr. Carmel Devaney .....	7
Session 2 - Child Protection Heather Wilson, PSC Mayo, Cormac Quinlan, Director of Transformation and Policy, Professor Andy Bilson .....	7
Resilience, The Biology of Stress and the Science of Hope .....	8

## Contents Day 2

Welcome Back - Introductions Catherine O'Donohoe, Conference Planning Lead, Regional Implementation Manager, South Reflections on Film Screen - The Biology of Stress and the Science of Hope Caroline McGregor .....	10
"Outcomes for Children, National Data and Information Hub" .....	10
"E-Learning Programme" .....	11
Session 3 - Creative Community Alternatives Jim Gibson - Tusla Chief Operations Officer, Eric Fenner Managing Director Casey Family Programs, Audrey Warren Interim Area Manager, Tusla .....	11
Guest Speaker - Davie Philip, Co-found of Sustainable Projects Ireland Ltd .....	13
Review and Close - Aisling Gillen, Regional Service Director - Tusla West, National Programme Lead for PPFS .....	14

## Appendices

1. Workshops
2. Programme
3. List of the Members of the 2017 Prevention, Partnership and Family Support Workshop Planning
4. Evaluation Form

**The aim of the 5th National Prevention, Partnership and Family Support Annual Workshop is to highlight best practice in prevention across the continuum of care through demonstrating improved outcomes for children and families**



The Workshop was divided into three sessions to highlight best practice in prevention across the continuum of care. There was a showcase of initiatives in how we work with children and families, discussing and demonstrating how these can lead to improved outcomes.

**Objectives of the Workshop were to:**

1. Demonstrate progress in preventative work across the continuum of care
2. Illustrate the value of collaborative working and identify key evidence-based outcomes to date
3. Highlight children and families' experience of preventative services
4. Connect practitioners across all levels of the continuum of care

**Participants would learn:**

1. Examples of best practice in Meitheal and Child and Family Support Networks
2. To review and discuss positive Family Supports and their application in practice
3. Ways in which solidarity, relationship-building and connectedness within communities can help support children and families to realise their potential.

## Welcome - Norah Gibbons, Chairperson, Tusla



### Norah Gibbons

Master of Ceremonies (MC) Norah Gibbons, Chairperson of Tusla Child and Family Agency, welcomed the participants to Hotel Kilkenny and gave an overview of the event.

The Chairperson outlined how parenting is a major part of the transformation project of Tusla and PPFS is a significant programme of work.

Norah then introduced Fred McBride, Chief Executive Officer (CEO) of Tusla.

## Opening Address - Fred McBride, Chief Executive, Tusla



### Fred McBride

Fred McBride, Chief Executive Officer, welcomed all conference attendees including colleagues from the Department of Children and Youth affairs.

Fred addressed the attendees on the Positive Impact of Prevention, Partnership and Family Support (PPFS). He outlined how the context of Tusla's work has changed but has not been getting easier, with a rise in young people's problems, including mental health issues and homelessness, which have all contributed to an increase in referrals to Tusla. Given this, he

stressed the importance of redirecting resources from the high end of the continuum of care to early intervention and prevention efforts.

The CEO congratulated all the teams on their work on PPFS as part of the broader Child Protection and Welfare Strategy and asked all attendees to continue to push and support PPFS in this context. Fred also thanked the PPFS funders, the Atlantic Philanthropies, and he ended his address with a video presenting the benefits and achievements of the PPFS programme over the last few years.





**Kevin Webster**

Kevin Webster, Principal Social Worker and Senior PPFS Manager, addressed the audience on developing prevention and early intervention in the Dublin South East and Wicklow region. He explained the PPFS structure for the whole of Dublin South East and Wicklow region with a focus on the Bray area. As an example of on-going prevention and early



intervention work, Kevin talked about Supporting Parents and Early Childhood Supports (SPECS) - a new initiative under the Bray Area Partnership, which takes an early intervention approach to working with parents to improve outcomes for children.

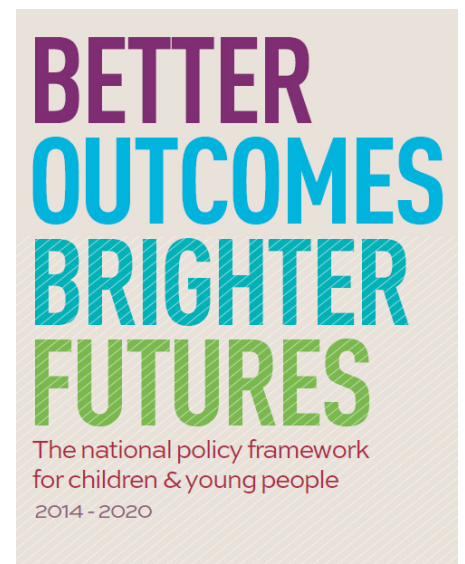


**Éimear Fisher**

Éimear Fisher, Assistant Secretary of the Department of Children and Youth Affairs, addressed delegates on the National policies that underpin the work of PPFS. She outlined three areas in her presentation: the overarching Irish and European policy frameworks which provide for a focus in Ireland on prevention and early intervention; lessons learned so far in this decade in relation to prevention and early intervention policies and links between government policy areas within the PPFS programme and broadly across Tulsa.

Éimear defined prevention as the development of strengths, supports and practices to prevent a problem developing, and early intervention as anticipating, identifying and addressing problems as they rise or escalate. She reiterated that early intervention and prevention can halt and even reverse poor outcomes for children and young people, highlighting the immense importance of the work of Prevention Partnership and Family Support. This directly complements the work of the department of Children and Youth Affairs which places early intervention and prevention at its core.

Éimear said that the PPFS program represents a positive step in working with families and welcomed the programme’s focus on parenting, as parents are the foundation for better outcomes for children.



## Session 1 - Prevention and Early Intervention



### Fergal Landy

Fergal Landy presented on the Prevention, Partnership and Family Support story so far. On the spectrum of implementation science, he said that the PPFS programme was at initial implementation stage with full mainstreaming yet to be achieved. He said that it is critical to come up with a plan to ensure that the early successes achieved by PPFS can be translated into the long term.

Early indicators of success in this process

include underlining parenting as a strategic priority and developing a new approach to commissioning. He spoke about Creative Community Alternatives as a radical new intervention that shows the potential of early intervention and prevention across the continuum of care. Fergal also presented a short filmed interview with a young man who had benefitted from the Meitheal process.



## Tusla National Research Office - Bernard Barrett



### Bernard Barrett

Bernard Barrett addressed the audience on developing a partnership with the National Research Office in order to build engaged research to support PPFS. He began with a brief discussion around the meaning of research and explained research empowerment as being within the personal and collective capability of all Tusla staff: asking basic research questions as an established component of their professional practice.

Bernard described the Tusla Electronic Research Centre and discussed its purpose in providing all Tusla staff with a wide range of social care resources and tools to enable information-based decision making. He outlined examples of available tools to strengthen research based decision making, such as databases, bibliographic software, electronic journals and search engines.

Building Engaged Research for **Prevention, Partnership and Family Support;**

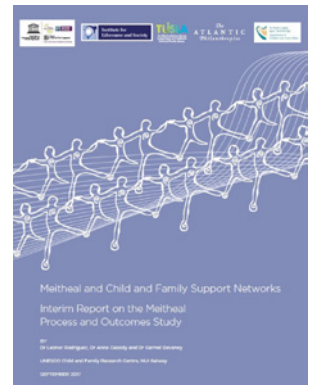
Partnership with the National Research Office



### Dr. Carmel Devaney

Dr. Carmel Devaney presented preliminary findings from her research on outcomes of the Meitheal model and the positive benefits for children, young people and families. She highlighted that the research is exploratory and longitudinal, using a mixed methods approach. She presented the findings from data analysis, outlining that Meitheal is seen as a positive experience providing access to supports and services, and as being empowering and non-judgmental, while building trust and hope.

The research included the views of a sample group of lead practitioners, parents, young people and social workers. Dr. Devaney also presented on some of the challenges to the implementation of Meitheal that were identified. For example, there was some lack of understanding of the Meitheal concept and roles in Meitheal and at times an increase in workload as a result of there being not enough lead practitioners. In conclusion she spoke about the final report on Meitheal and CFSNs which is currently underway.



## Session 2 - Child Protection



### Heather Wilson

Heather introduced the speakers on the Child Protection panel. She spoke about the importance of the interface between child protection and Family Support services, so that if a parent or family presents to any service they can be easily directed to the most appropriate service to meet their needs, acting as “gateways, not gatekeepers”.



**Cormac Quinlan**

Cormac Quinlan addressed the audience on prevention and participation and how these relate to the new Child Protection and Welfare Strategy. His presentation emphasized the importance of grounding these principles and the Strategy in everyday child protection and welfare practice. He outlined the different types of child protection strategies that have been developed in different countries. Cormac noted that within Ireland, there have been notable areas of progression and notable areas of challenge in terms of outcomes for children. Discussing the response pathways across

the continuum of care, he highlighted how the focus changes across the continuum; sometimes it is more child protection focused, sometimes it is family service focused and sometimes child rights focused. This can lead to confusion for practitioners in trying to incorporate and balance all elements of practice. These are issues that have fed into the Child Protection and Welfare Strategy.

Cormac highlighted that fundamentally, whether through Meitheal or Signs of Safety, as an Agency, we want to keep parents connected to their children and use formal and informal support systems in order to connect and partner better with them. He outlined that this idea is represented by a systematic approach in the Child Protection and Welfare Strategy. He concluded by saying that as an organisation, Tusla has a responsibility to influence and develop the wider contexts of Child Protection and Welfare; legal, policy, agency and practice.



**Professor Andy Bilson**

Professor Andy Bilson addressed the audience on international research and trends in Child Protection. His presentation outlined the trends in child protection interventions, the level of involvement of children in child protection systems over time and the level of involvement of children in poor communities. He then went on to propose ideas for future policy and practice.

Through an analysis of data from various sources, Andy outlined that there has been an investigative increase in child protection services in post-industrialised English speaking countries. He pointed out that Ireland is an exception in the general trend of the rising number of children in alternative care. His presentation raised some pertinent questions about whether or not the current increase in child protection interventions actually result in reducing harm to children and about the impact of child protection's concentration in the most deprived communities. He emphasised the importance of a new paradigm to underpin all work in child protection, that of social development and effective social investments.



## Resilience, The Biology of Stress and the Science of Hope

### To close the 1st day of the conference, the film 'Resilience' was shown to the audience

Researchers have recently discovered a dangerous biological syndrome caused by abuse and neglect during childhood. As the new documentary Resilience reveals, toxic stress can trigger hormones that wreak havoc on the brains and bodies of children, putting them at greater risk of disease, homelessness, prison time, and early death. While the broader impacts of poverty worsen the risk, no segment of society is immune. Resilience, however, also chronicles the dawn of a movement that is determined to fight back. Trailblazers in paediatrics, education, and social welfare are using cutting-edge science and field-tested therapies to protect children from the insidious effects of toxic stress - and the dark legacy of a childhood that no child would choose.



“The child may not remember, but the body remembers.”

## Reflections on Film Screen - The Biology of Stress and the Science of Hope



### Caroline McGregor

Caroline McGregor reflected on the documentary screened to attendees the previous evening, summarizing the key points and highlighting those aspects of the film she found the most revealing. The film delves into the science of Adverse Childhood Experiences (ACEs) and the birth of a new movement to treat and prevent Toxic Stress. Now understood to be one of the leading causes of everything from heart disease and cancer to substance abuse and depression, extremely stressful experiences in childhood

can alter brain development and have lifelong effects on health and behaviour.



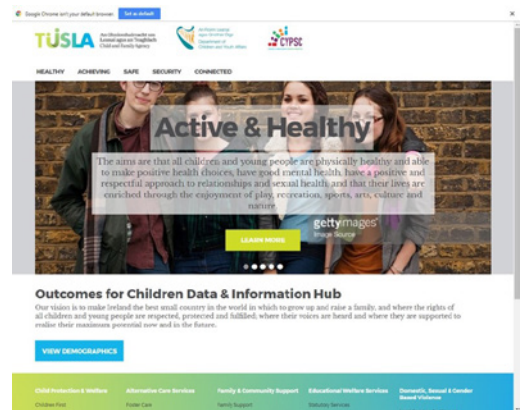
## “Outcomes for Children, National Data and Information Hub”



### Peggy Ryan and Sheila Moore

Peggy Ryan and Sheila Moore presented on the Outcomes for Children - National Data and Information Hub. They described the project as a sustainable opportunity to provide a national, standardised technical solution for mapping outcomes, indicators and services for children and young people based on Better Outcomes Brighter Futures. They outlined the scope of the project and introduced the eleven CYPSCs that will pilot the hub. This national open data hub is to host relevant and published data to inform CYPSC

and Tusla planning. In their presentation, they introduced the audience to the hub prototype and provided a demonstration at their workshop stand throughout the conference.



## “Prevention, Partnership and Family Support (PPFS) E-Learning Programme”



### Paul Fitzgibbon

Paul Fitzgibbons from Workforce Learning and Development showcased the new Prevention, Partnership and Family Support E-learning Programme. The Programme will support learners to identify key features of Tulsa's Programme of Prevention Partnership and Family Support and its relevance to their work with children and families. Features include an overview of the 5 key work streams of PPFS along with key messages of the programme

from managers, trainers and practitioners. The e-learning programme also includes endorsement from Prevention, Partnership and Family Support Programme collaborators such as the Atlantic Philanthropies and NUI Galway.



**Session 3 - Creative Community Alternatives**



**Jim Gibson**

Jim Gibson introduced Tusla’s Creative Community Alternatives (CCA) project. Jim described CCA as a result of the urgent need to come up with immediate and creative solutions for children at risk who are not suited to residential care. This wraparound service is defined by the child and their family’s specific needs. Jim defined the objective of CCA as to ensure the provision of unique, timely and proportional services for a particular child, as an alternative to alternative care. The CCA initiative

aims to reduce the number of children in alternative care by supporting them to remain in their communities through a combination of bespoke interventions including therapy and respite care.



**Session 3 - Creative Community Alternatives**



**Professor Eric Fenner**

Eric Fenner spoke to the audience about the importance of partnering for better outcomes with the children and families we aim to support. With over 20 years’ experience in child welfare, Eric strongly advocated that children are safest when they are part of a strong family and families are strongest when they are part of a strong community. Recognising that child welfare is often more complex than rocket science, he stressed the importance of child protection services working in a strong community context, as welfare cannot happen in isolation.

Eric discussed the dual track system for child protection he adopted in Columbus, Ohio, where there is one track for cases of abuse and one for families who could learn healthier patterns of behaviour through training and support. He said that this was done by working in conjunction with community services that already existed in those areas and that these services were brought “out of offices and into people’s homes”. This resulted in a decrease in the number of children in foster care, which freed up more resources to be used elsewhere. He concluded by discussing the importance of setting up measurable accountability systems to ensure that success can be clearly defined.



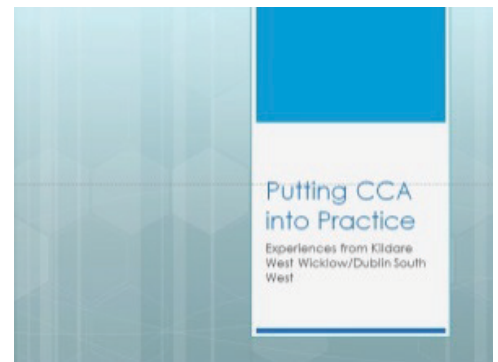
### Audrey Warren

Audrey Warren, presented on her experience of putting Creative Community Alternatives into practice. Audrey outlined her area's work on CCA over the past nine months, including key aspects of the planning phase, the aims and objectives of the area with regards to their desired outcomes, and key challenges and learning for the area.

Audrey outlined the reasons her area got involved with the CCA project, which included increased dependency on private care, increasing complexities of cases and

rising costs. She highlighted the value for money of CCA in terms of savings and stressed the importance of getting the foundations of the project right. A clear date for commencement of services, the involvement of HR and Finance in the CCA governance group and the ability to tap into the skill sets of existing staff are all key to success. Audrey stated that on reflection, a more intensive and well supported planning period that lasts 3-4 months is crucial for success.

She concluded by asserting that the CCA process has helped her area to move away from crisis decision making and has promoted inter-agency collaboration.





### **Davie Philip**

Davie Phillips spoke about the importance of belonging, solidarity, community and place. He highlighted the importance of identifying resilience within local communities. He outlined a number of Eco village resources that are on-going in communities at present, aimed at creating environmental and social resilience, a place for young people in the community and an example for educators while building strengths and facilitating conversations in local places. He argued that these have huge potential to build solidarity, strengthen social capital, improve fragmented

communities and create synergy and cohesion within them.

Davie emphasised how important it is to participate in the decisions that affect you in your community. It is important to engage more and to govern our resources together. He said he had heard great examples of participatory community practice from the sector during our conference, which reassures him that we are moving to a more joined up, connected and holistic approach in each of our disciplines. Davie stressed the important of this kind of cross-learning and cooperation going forward, to help us deal with the challenges ahead.

“Great achievement only comes through cooperation”.

**cultivate**  
ACCELERATING THE TRANSITION TO A RESILIENT & LOW CARBON SOCIETY

**CLOUGHJORDAN ECOVILLAGE**  
building • sustainable • community

**SURFING THE WAVES OF CHANGE**  
Collaborating to Build Resilient Communities

**Davie Philip**  
Cultivate Living & Learning  
(Sustainable Ireland Co-operative Society Ltd.)  
Cloughjordan Ecovillage  
(Sustainable Projects Ireland CLG)

davie@cultivate.ie

## Review and Close

**Aisling Gillen, Regional Service Director - Tusla West, National Programme Lead for PPFS**



### **Dr. Aisling Gillen**

Aisling Gillen, Regional Service Director (West) and National Programme Lead for the Development and Mainstreaming Programme for PPFS, reviewed and summarized the events of the two days. Aisling praised the insightful comments and relevant discussions that took place at the conference. She pointed out the importance of coordinating different services to adapt to what families most need as they move up or down the continuum of care. In her review, she revisited the goal of shrinking the high end of Tusla's work but highlighted the importance of doing so in a focused

and incremental manner. One critical message from the conference was that the models of collaborating and working together to support families were very strong. From Family Resource Centres working to integrating data analytics into their programming to Work Force Learning and Development's inputs, the building of trust and the maintenance of high standards was being practiced by all.

Other key messages included the importance of focusing on the sufficiency and robustness of evidence and using our 'good sense' collectively in order to positively impact families and children.

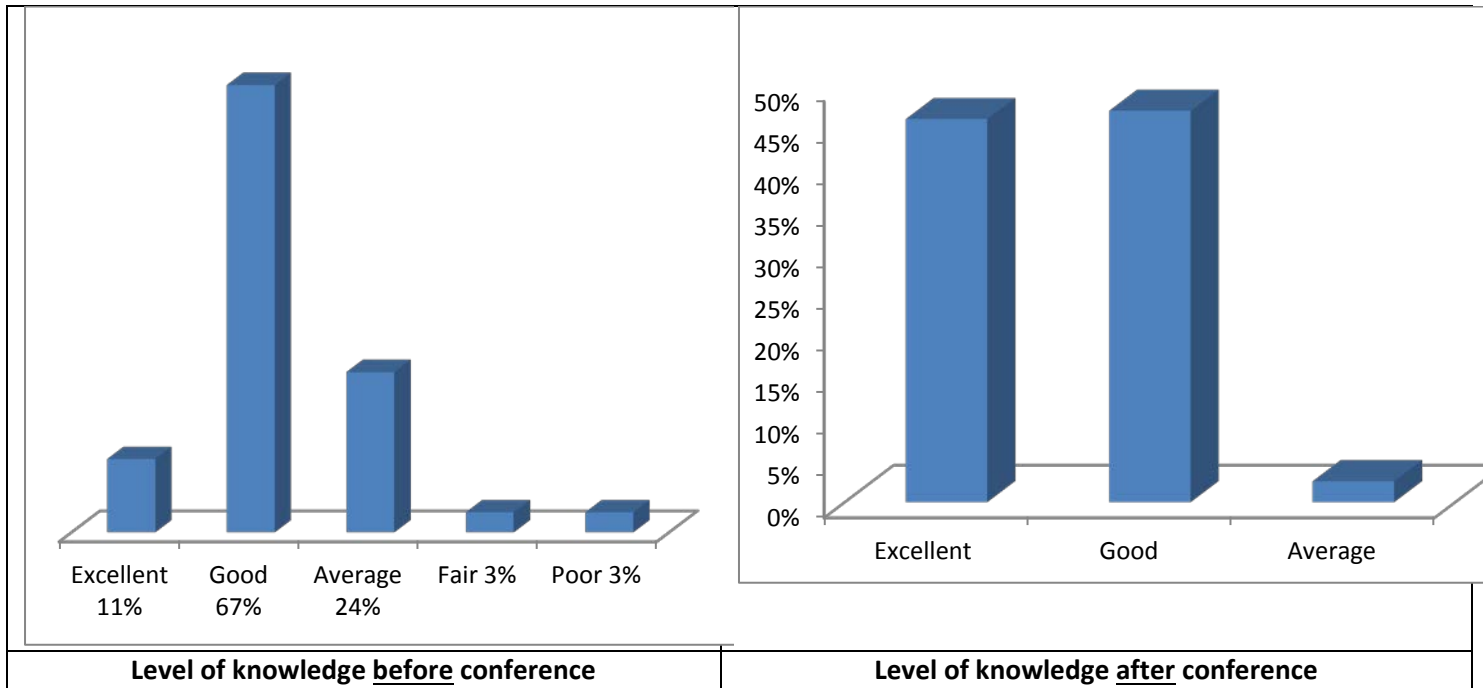
Aisling gave special thanks to the international guest speakers, Tusla CEO, COO and all the speakers for their input. Particular thanks went to the conference planning team for organising a very successful conference, with vibrant conversations being had at every stage. Aisling then closed the conference.

## Summary of Delegate's Evaluations

The following pages provide a summary of the key findings from the participant's evaluation feedback from the conference. 118 completed evaluation forms were received from participants. The data from the forms has been collated and organised under the key headings.

### Level of knowledge

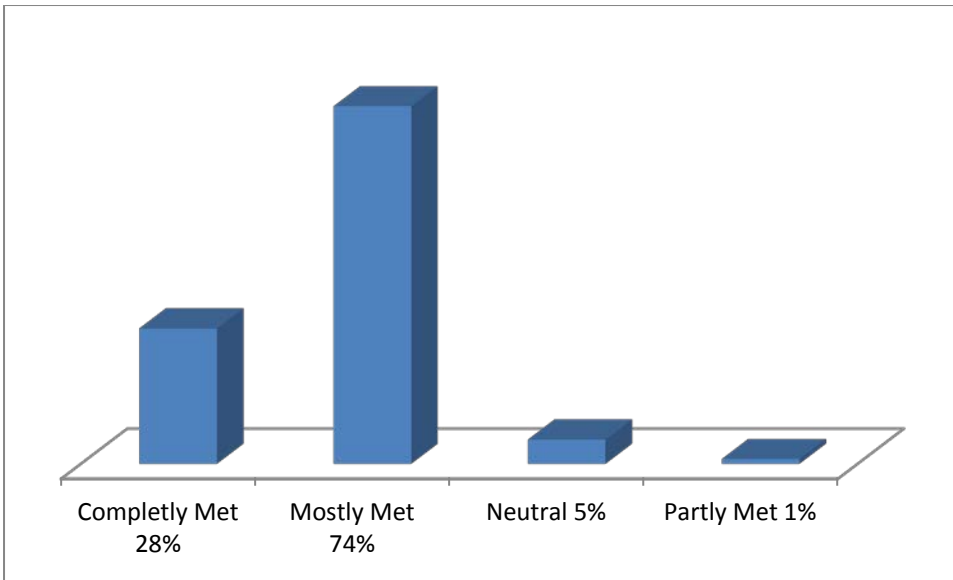
Participants were asked about their level of knowledge of Prevention Partnership and Family Support before and after attending the conference.



The vast majority of participants indicated excellent to good knowledge of Prevention Partnership and Family Support prior to attending the conference. The data demonstrates that overall participant's level of knowledge improved following participation at the conference.

### Objectives

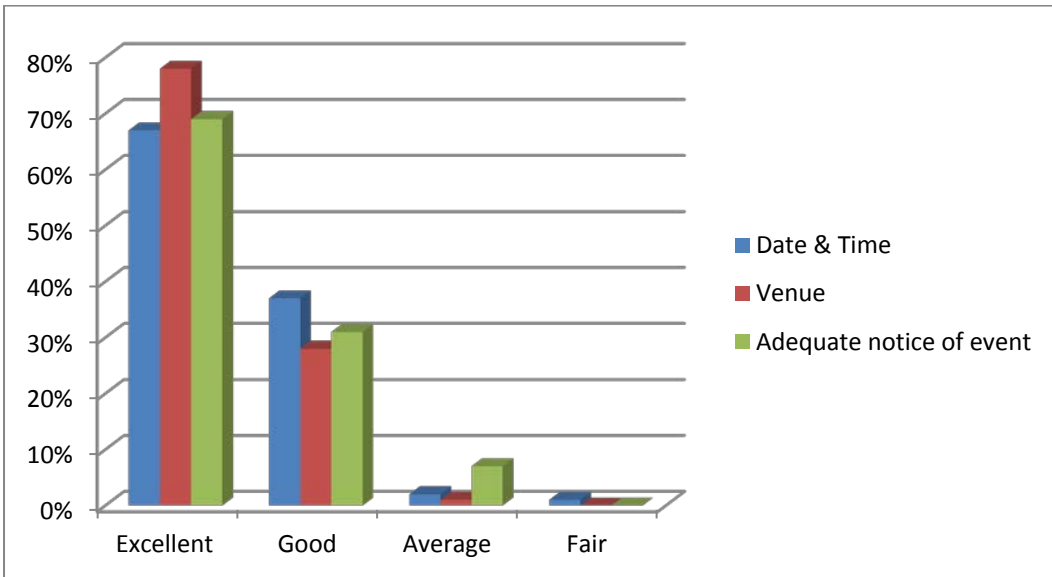
Participants were asked if conference objectives were met.



The majority responded that the conference objectives were mostly met.

### Logistics

Participants were asked to rate the three key logistics of the conference.



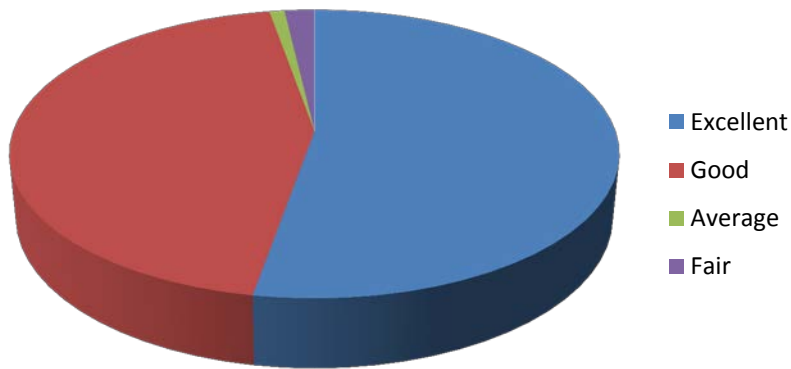
*“Hotel Kilkenny is a perfect venue”*

*“Everything lovely, we were well looked after”*

*“Very well organised event”*

The vast majority of respondents found the date, timing and venue of the event excellent. There were a number of positive comments about the overall organisation of the event.

## Speakers



Overall the speakers were rated as excellent or good.

Excellent	Good
57%	48%

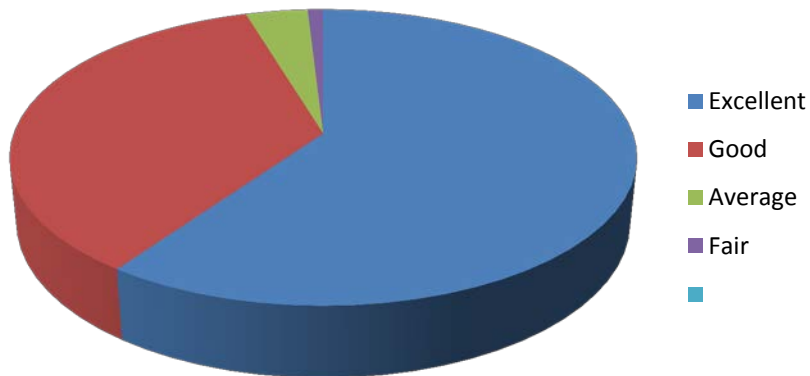
No respondents rated the speakers as poor.

*“Eric Fenner’s presentation was fantastic his style, key messages and passion is admirable”*

*“The workshops were really good, hearing about real practice”*

*“Jim Gibson presentation was excellent”*

## Networking

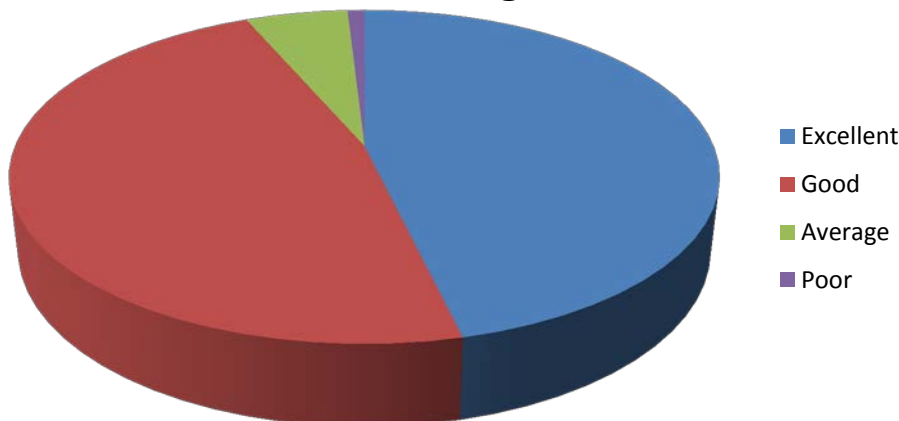


The majority of respondents rated the networking as excellent or good.

*“Networking could be facilitated more formally through an exercise”*

*“Long time between speakers & felt that there should have been more movement/coffee breaks”*

## Catering



Almost all respondents rated the catering was excellent and good.

*“Having travelled for an hour and a half to get here I feel there should be coffee available both mornings”*

*“Food was not very hot”*

The most useful aspect of the conference

Participants were asked what they found most useful from the conference. The word cloud below depicts the responses. The larger the word in the cloud the more mentions recorded by the respondents.



*"The speakers were very interesting and a mixture of visuals, music and presentation styles kept the attention of the audience"*

*"Fred's comment use your own good sense"*

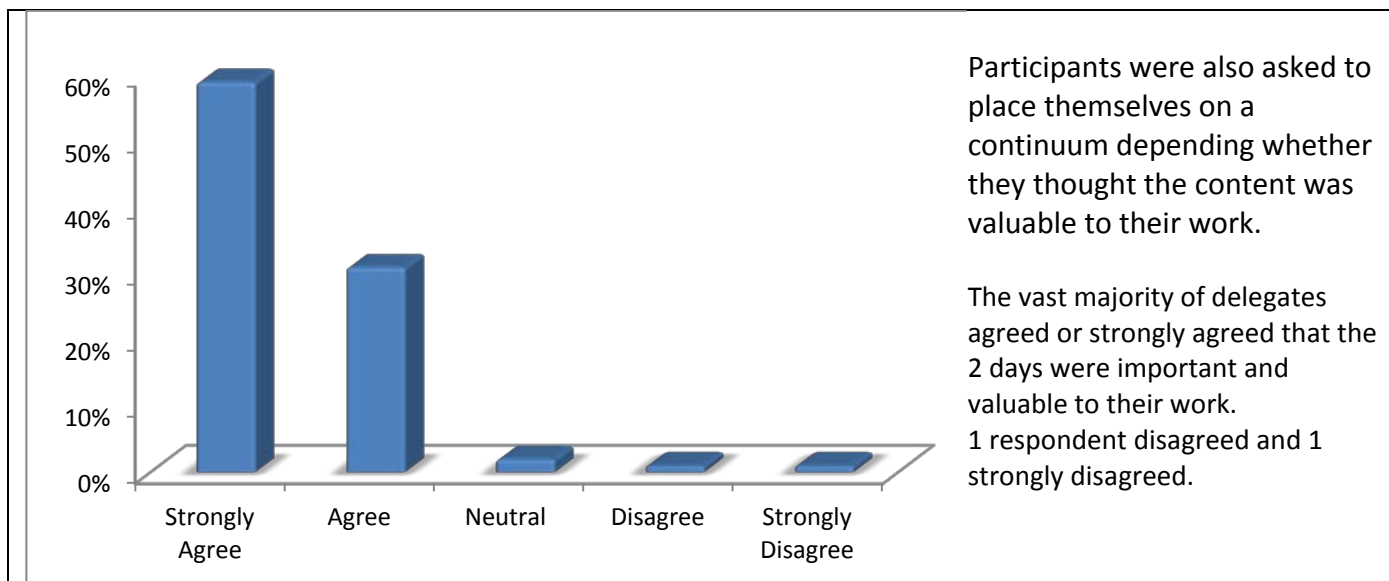
*"Excellent 2 days, Eric Fenner was amazing"*

#### Least useful aspect of the conference

52 % of respondents indicated that everything about the National Workshop was useful. Other comments in terms of what was least useful;

- Feeling the National Workshop had a very full agenda was a "long day"
- 14 respondents were specific in their comments on the key note speakers "slides were like essays", "policy we already know" "overloaded with statistics"

## Application of learning to practice



Participants were asked “*What (if any) learning from this conference can be applied in your job?*”

The responses to this question varied from participant to participant and so it was difficult to group them thematically. Comments included;

- Consider community approaches
- Fred’s comment “use your own good sense”
- Knowledge of the ACE model –toxic stress and its overall effects/feedback from agencies & application of ACE model
- Andy Bilson- ‘feeling that we are going around in circles at times’
- We are actually doing a good job
- Full implementation of PPFS
- The work we are doing is important
- Eric Fenner ‘very powerful’
- Link between teaching & research informing practice/need evidence theory
- New energy
- All learning
- Importance of PPFS & Social Work Working creatively together
- Partnership approach/interagency
- New data hub is exciting
- Policy mandate needed to secure engagement of all parties
- PPFS principals work!
- If parents feel listened to they can be dynamic on a case
- Principals of family support need to permeate into the wider system

## Attitude

Participants were asked if any change of attitude had occurred as a result of attending the conference. The largest response indicated that they had no change in attitude; other comments are detailed in the table below.

<i>"Use PPFS if appropriate"</i>	<i>"The value of being innovative"</i>	<i>" More confident that we are doing good"</i>	<i>"I will use my good sense"</i>
<i>"No attitude change but interest developed in the PPFS approach"</i>	<i>"Hope"</i>	<i>" More staff need to be trained in Meitheal"</i>	<i>"CCA is a very interesting idea/way"</i>

## Conclusion

In conclusion the data collected and collated by Workforce Learning and Development from the standardised evaluation forms completed at TUSLA'S PPFS National Workshop in 2017 is very positive. There is a clear indication that the learning objectives of the conference were met, that the overall organisation was excellent. The data identifies the key note speakers were particularly interesting and useful to practitioners in their work.

## Core Messages



# Prevention, Partnership & Family Support Workshops

## WORKSHOP 1

**Nurturing Relationships through Nature - A joint Family Support and Foróige initiative. A creative response to compliment the journey through the Meitheal Model**

**Presenters:** Ainé Shanahan, (Senior Child & Family Network Coordinator, Interim),  
Catherina O'Sullivan (Art Psychotherapist), Maire Kennedy (Foróige Project Worker)  
Nick Lenane (Foróige Project Worker)

-----

**'Meitheal through the Early Intervention Team and Family Support.' (DNE)**

**Presenters:** Catherine McManus (Child & Family Support Network Coordinator), Sandra  
Crawley (Family Support Worker)

-----

**'The Changing Face of Family Support - how a Tusla Family Support Service is championing best practice along the continuum between Meitheal, Comhar and the Child Protection Social Work Service' (DML)**

**Presenters:** Deirdre Grace (Family Support Coordinator, Kildare West Wicklow),  
Caroline Sheehan (Family Support Coordinator, Dublin South West)

## WORKSHOP 2

**Meitheal Case Study - 'Supporting families living & parenting with a chronic physical illness' (WEST)**

**Presenters:** Siobhan Duane (CFSN Coordinator), Grainne Costello  
(Social Work Team Leader)

-----

**'The Young People At Risk Network and interagency Protocol - The Development of Community based approaches to working with Children at Risk -Learning for development of Networks & embedding of Meitheal' (DNE)**

**Presenters:** David Little (Child & Family Network Coordinator Dublin North City),  
Frank Mulvihill (YPAR Meitheal & Services Support Coordinator)

-----

**'The Benefits of the PPFS programme of work to families/staff & agencies.' (SOUTH)**

**Presenters:** Nora Roberts, Kerina Foran and Julie Ryan  
(Senior Child & Family Network Coordinators)

## WORKSHOP 3

**‘The impact of the good relationships & interconnectedness promoted through Meitheal & CFSNs on child outcomes in a rural Irish setting’ (WEST)**

**Presenters:** Nicola Harvey (Child & Family Network Coordinator)

---

**‘Embedding Educational Welfare - Practice in Tusla through the Meitheal process’ (DML)**

**Presenters:** Jean Rafter, Regional Manager, EWS, DML) & Julie Cahill (Senior PPFS Manager, Kildare, West Wicklow)

---

**‘Meitheal and Me’ - Vox Pop style presentation from Parents, Young People and Lead Practitioners experience of the Meitheal Model (SOUTH)**

**Presenters:** Tony Kennedy & Joan Dunne  
(Senior Child & Family Network Coordinators)

The logo for Tusla, the Children's Services Agency in Ireland. The word 'Tusla' is written in a large, bold, sans-serif font. The letters are colored in a gradient: 'T' is light green, 'u' is a slightly darker green, 'i' is a medium green, 's' is a light blue-green, 'l' is a light blue, and 'a' is a medium blue. The letters are spaced out and have a slight shadow effect.

# Agenda - 15th November

9.15	<b>Registration and Networking / Tea and Coffee</b>
10.00	<p><b>Norah Gibbons, Chairperson, Tusla</b> Welcome &amp; Introduction</p> <p><b>Fred McBride, Chief Executive, Tusla</b> “Prevention, Partnership &amp; Family Support - Positive Impact”</p>
10.30	<p><b>SESSION 1</b></p> <p><b>Kevin Webster - Senior PPFs Manager and Principal Social Worker, Dublin South East Wicklow</b> Introduction</p> <p><b>Éimear Fisher - Assistant Secretary, Department Children and Youth Affairs</b> “Prevention and Early Intervention - the Policy Context”</p> <p><b>Fergal Landy - Regional Implementation Manager for PPFs</b> “Prevention, Partnership and Family Support, the Story so Far”</p> <p><b>Comments Q&amp;A</b></p>
11.45	<p><b>Regional Workshops</b> “Demonstrating good outcomes for children and families through the Meitheal model and Child &amp; Family Support Networks”</p>
13.30	<b>Lunch</b>
14.30	<b>Ossory Youth Music</b>
14.45	<p><b>Bernard Barrett - National Research Office</b> “Building Engaged Research for Prevention, Partnership and Family Support; Partnership with the National Research Office”</p>
14.55	<p><b>Dr. Carmel Devaney</b> <b>UNESCO Child and Family Research Centre, NUIG</b> “The preliminary findings of the Meitheal Process and Outcomes Study”</p>
15.05	<p><b>SESSION 2</b></p> <p><b>Heather Wilson - Principal Social Worker for the Child Protection &amp; Welfare Service - Mayo</b> Introduction</p> <p><b>Cormac Quinlan - Director of Transformation and Policy, Tusla</b> “The Child Protection &amp; Welfare Strategy: Prevention, Participation and Landing them in Everyday Child Protection and Welfare Practice”</p> <p><b>Professor Andy Bilson - Emeritus Professor of Social Work, University of Central Lancashire Adjunct Professor, University of Western Australia</b> “International Research and Trends in Child Protection”</p> <p><b>Comments Q&amp;A</b></p>
16.45	<p><b>Light Refreshments</b> <b>Resilience, The Biology of Stress and the Science of Hope:</b> <b>A film by KPJR</b></p>
18.00	<b>Close</b>

## Agenda - 16th November

9.30	<p><b>Norah Gibbons</b> Introductions and Review</p>
9.45	<p><b>Dr Caroline McGregor - Professor of Political Science and Sociology (Social Work), UNESCO Child and Family Research Centre, NUI Galway</b> "Reflections on Film Screening – the Study of Adverse Childhood Experiences"</p>
10.00	<p><b>Peggy Ryan and Sheila Moore - Regional Management Information Officers</b> "Outcomes for Children, National Data &amp; Information Hub"</p>
10.15	<p><b>Workforce Learning &amp; Development</b> "Prevention, Partnership &amp; Family Support (PPFS) E-learning programme"</p>
10.25	<p><b>Tea/Coffee Break</b></p>
10.40	<p><b>Ossory Youth Music and The Drum Project</b></p>
10.55	<p><b>SESSION 3</b></p> <p><b>Jim Gibson - Chief Operations Officer, Tusla</b> "Introduction"</p> <p><b>Professor Eric Fenner - Managing Director Casey Family Programs</b> "Partnering for Better Outcomes"</p> <p><b>Audrey Warren - Interim Area Manager, Dublin South West/Kildare/West Wicklow</b> "Putting Creative Community Alternatives into Practice"</p> <p><b>Comments Q&amp;A</b></p>
12.40	<p><b>Guest Speaker</b> <b>Davie Philip</b> Co-founder of Sustainable Projects Ireland Ltd.</p>
13.20	<p><b>Dr Aisling Gillen - Regional Service Director - West</b> National Programme Lead for Development &amp; Mainstreaming Programme for Prevention, Partnership &amp; Family Support (PP&amp;FS) <b>Review &amp; Close</b></p>
13.40	<p><b>Lunch</b></p>

**Prevention, Partnership and Family Support Workshop 2017 Planning Working Group**

Catherine O'Donohoe	Regional Implementation Manager, PPFS, South
Ann Butler	National Support Officer / PPFS
Joanne Walsh	Participation and Partnership Officer, South
Nicola Kane	Workforce Learning and Development Officer, Tusla
Rachel Ann Ryan	Communications Officer / PPFS
Mary Ferris	Clerical Support/PPFS
Laura Rice	Clerical Support/PPFS
Emma O'Farrell	Clerical Support/PPFS
Amy Hayes	Clerical Support/PPFS



#PPFS17 

**TÚSLA**  
An Ghníomhaireacht um  
Leanaí agus an Teaghlach  
Child and Family Agency

*The*  
**A T L A N T I C**  
*Philanthropies*