



**An Ghníomhaireacht um  
Leanaí agus an Teaghlach**  
Child and Family Agency

## **Monthly National Performance Activity Report**

**May 2014**

## Contents

Introduction .....	3
--------------------	---

### Section 1 – Performance Information

1.1 Number and Percentage of Children in Care (by care type) .....	5
i) Residential Special Care.....	6
ii) Residential High Support .....	6
iii) Residential General Care .....	6
iv) Residential Out of State Secure .....	7
v) Foster Care General .....	7
vi) Foster Care with Relatives.....	8
vii) Other Care Placements .....	8

1.2 Number and Percentage of Children in Care with an Allocated Social Worker (by care type) .....	10
i) Residential Special Care.....	11
ii) Residential High Support .....	11
iii) Residential General Care .....	11
iv) Residential Out of State Secure .....	11
v) Foster Care General .....	11
vi) Foster Care with Relatives.....	11
vii) Other Care Placements .....	11

1.3 Number and Percentage of Children in Care with a Written Care Plan (By care type) .....	12
i) Residential Special Care.....	13
ii) Residential High Support .....	13
iii) Residential General Care .....	13
iv) Residential Out of State Secure .....	13
v) Foster Care General .....	13
vi) Foster Care with Relatives.....	13
vii) Other Care Placements .....	13

Appendix 1: National Performance Scorecard.....	14
---	----

Appendix 2: Schedule of Metric Reporting 2014.....	20
--	----

## Introduction

On the 1st of January 2014 the Child and Family agency became an independent legal entity, comprising the former HSE Children and Family Services, Family Support Agency and the National Educational Welfare Board as well as incorporating specific psychology services and a range of services responding to domestic, sexual and gender based violence.

The Child and Family Agency is now the dedicated State agency responsible for improving wellbeing and outcomes for children. It represents the most comprehensive reform of child protection, early intervention and family support services ever undertaken in Ireland. It is an ambitious move which brings together some 4,000 staff and an operational budget of approximately €600m.

The Agency operates under the *Child and Family Agency Act 2013*, a progressive piece of legislation with children at its heart, and families viewed as the foundation of a strong healthy community where children can flourish. Partnership and co-operation in the delivery of seamless services to children and families are also central to the Act.

The establishment represents an opportunity to think differently, where appropriate to behave differently and to seek a wide range of views regarding the most effective way of working together to deliver a wide range of services for children and families. An approach which is responsive, inclusive and outward looking

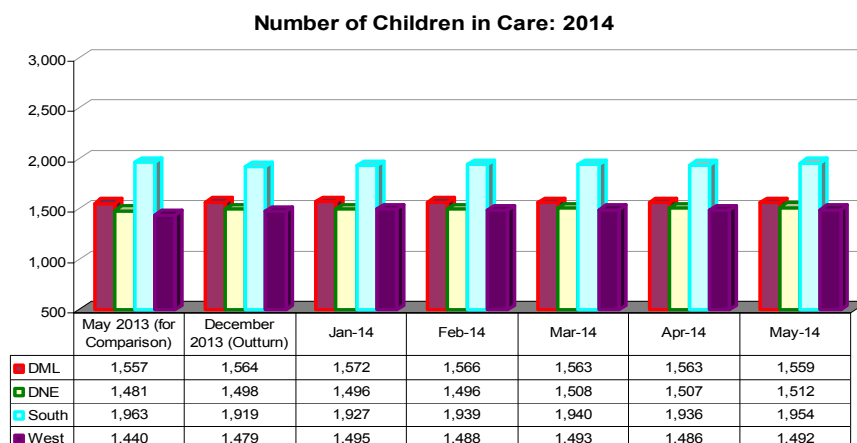
Under the Child and Family Act, 2013 the Child and Family Agency is charged with:

- supporting and promoting the development, welfare and protection of children, and the effective functioning of families;
- Offering care and protection for children in circumstances where their parents have not been able to, or are unlikely to, provide the care that a child needs. In order to discharge these responsibilities, the Agency is required to maintain and develop the services needed in order to deliver these supports to children and families, and provide certain services for the psychological welfare of children and their families;
- responsibility for ensuring that every child in the State attends school or otherwise receives an education, and for providing education welfare services to support and monitor children's attendance, participation and retention in education;
- ensuring that the best interests of the child guides all decisions affecting individual children;
- consulting children and families so that they help to shape the agency's policies and services;
- strengthening interagency co-operation to ensure seamless services responsive to needs;
- undertaking research relating to its functions, and providing information and advice to the Minister regarding those functions;
- commissioning services relating to the provision of child and family services

The monthly performance activity report will contain data which is returned and validated during the reporting period. Returns are made on a monthly, quarterly, bi-annual and annual basis. The schedule for reporting of the various metrics is contained in appendix 2.

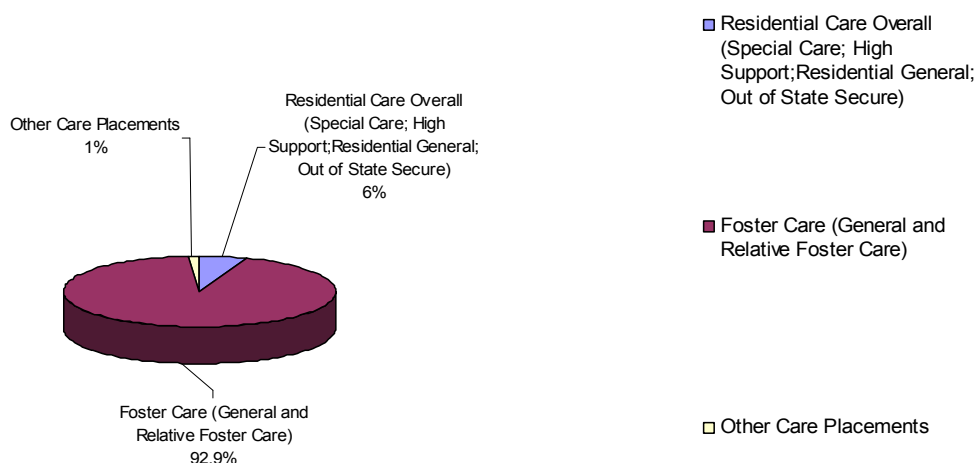
## 1.1 Number and percentage of Children in Care (by care type)

There were 6,517 children in care on 31<sup>st</sup> May 2014. This demonstrates a 0.4% increase over the April figure of 6,492 and a 1% increase over the May 2013 figure of 6,441.



Of the 6,517 children in care overall at the end of May 2014, 93% (6,054) of all children in care are in a foster care placement. This figure includes 4,182 (64%) in foster care general and 1,872 (29%) in relative foster care. Further analysis and breakdown of care types is provided below.

**Percentage of Children in Care by Overall Care Type: MAY 2014**



### i) Residential Special Care

Of all the children in care at the end of May 0.2% (16/6,517) were in a residential special care placement. The regional breakdown of these placements was as follows: Dublin Mid Leinster 0.4% (7/1,559) Dublin North East 0.1% (2/1,512); South 0.2% (3/1,954) and the West 0.3% (4/1,492).

Special Care Unit	Location	Gender Mix of Unit	Capacity
Ballydowd	Dublin	Mixed Gender Unit	10
Coovagh House	Limerick	Mixed Gender Unit	2
Gleann Alainn	Co Cork	Female Unit	4

### ii) Residential High Support

0.05% (3) of all children in care at the end of May were in a residential high support placement. The use of residential high support is being phased out during 2014 to create additional capacity to provide placements for young people who are assessed as requiring special care.

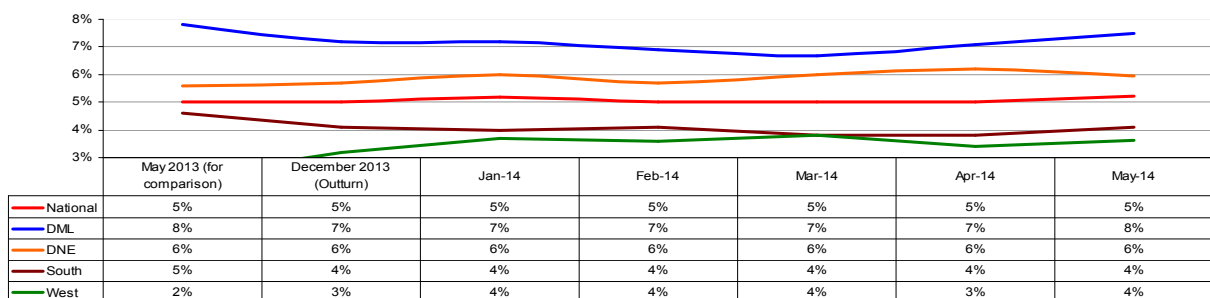
High Support Unit	Location	Gender Mix of Unit	Capacity
Crannog Nua	Co Dublin	Mixed Gender Unit	3

The percentage of children in care in a residential high support placement when broken down by region is: Dublin Mid Leinster 0.1% (2/1,559); South 0.1% (1/1954). Dublin North East and the West do not have any young people in a high support placement.

### iii) Residential General Care

5% (341) of all children in care (6,517) at the end of May were in a residential general placement.

Percentage of Children in Care in Residential General Care : 2014

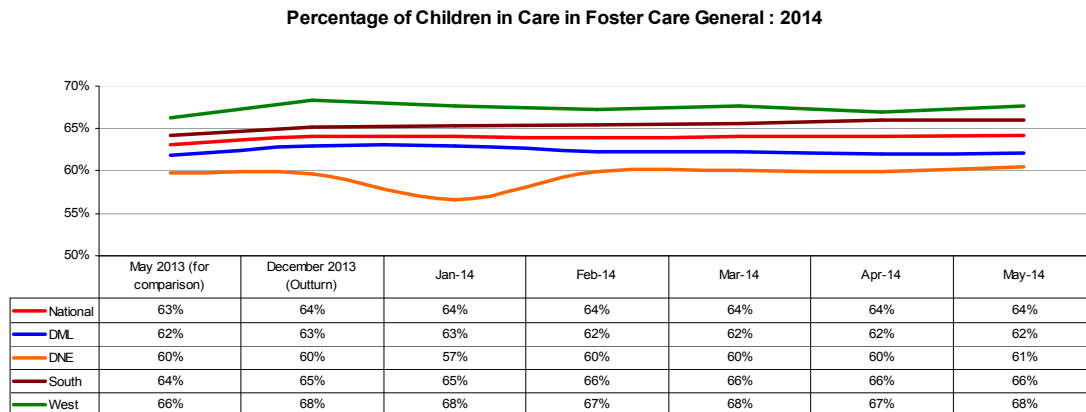


Of the 341 children in care in a residential care general placement, 152 (45%) are in a private placement. There has been an increase of 7 young people placed in a private residential centre in the last month, from 145 in April. This demonstrates an increase of 32 from 120 (37%) since May 2013 in the use of this placement type. The percentage breakdown of children in a residential general placement who are in a private placement in each region is: Dublin Mid Leinster 46% (54/118); Dublin North East 38% (34/90); South 48% (38/80); and the West 49% (26/53).

#### iv) Residential Out of State (Secure) Placement

At the end of May 0.1% (7) of all children in care (6,517) were in a residential out of state secure placement.

#### v) Foster Care General



64% (4,182) of all children in care (6,517) at the end of May were in a foster care general placement. This equates to a rise of 28 children in this placement type compared to April 2014; but equals the December 2013 % figure of 64% (4,140) of the total percentage number of children in care in that month. The number of children in foster care general has increased by 75 from the May 2013 figure of 4,065.

256 (6%) of all children in foster care general (4,182) were in a private placement at the end of May 2014. This demonstrates an increase of 35 over the same period last year from 221 (5.4% of all children in foster care general at that time) and an increase of 4 in the last month from 251 in April. The percentage of children in a private general foster care placement in each region was: Dublin Mid Leinster 15% (143/968); Dublin North East 8% (75/915); South 2% (24/1290) and the West 1% (14/1009)

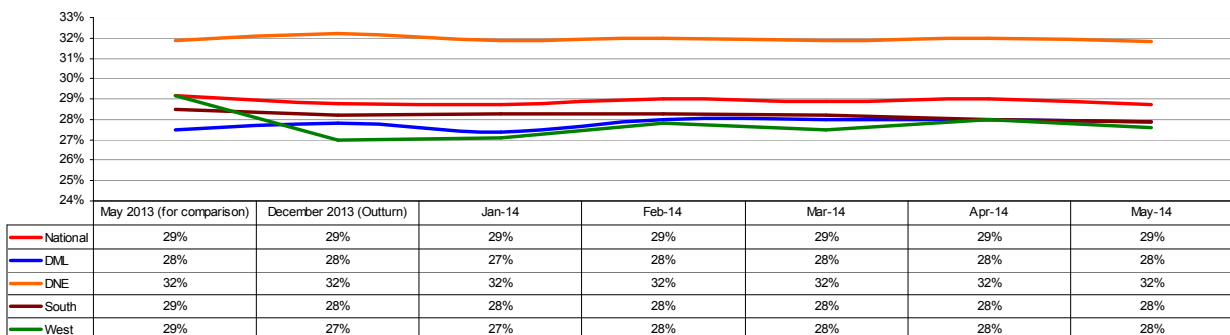
At the end of Quarter 1 2014 there were 4,094 foster carers approved and on the Foster Care Panel (Part III Regs). Of these, 2,812 (69%) were categorised as foster care general; 1,128 (28%) as relative foster carers and 154 (4%) as private carers.

Between June 2013 (2,866) and Quarter 1 2014 (2,812) there was a 2% decrease in the number of foster carers (general) approved and on the Foster Carer Panel (Part III, Regs).

#### vi) Foster Care with Relatives (FCWR)

29% (1,872) of all children in care (6,517) at the end of May were in a FCWR placement. Based on the overall numbers of children in care, this represents an increase of 14 children on the December 2013 figure of 1,858, and a decrease of 6 on the May 2013 return of 1,880 (29%/6,441 of all children in care in that reporting period). The numbers of children in FCWR in each region are: DML (435); DNE (481); South (545); West (411).

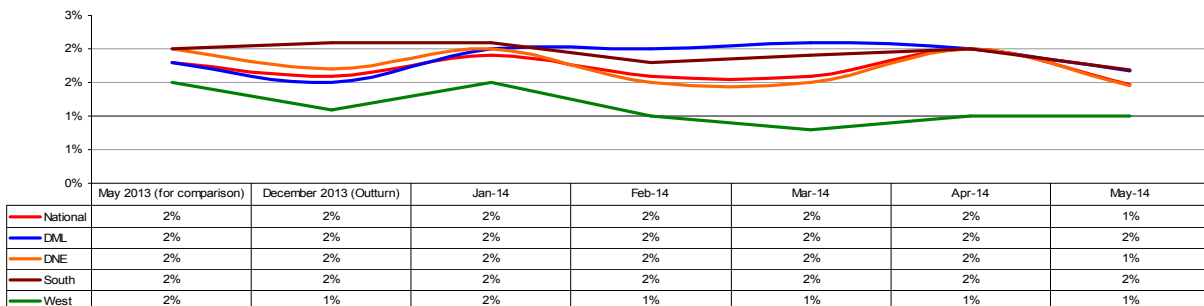
Percentage of Children in Care in Foster Care with Relatives : 2014



#### vii) Other Care Placements

At the end of May 1% (96/6,517) of all children in care were in an “other” care placement. There is a decrease of 9 in this category from 105 in April.

Percentage of Children in Care in Other Care Placements : 2014

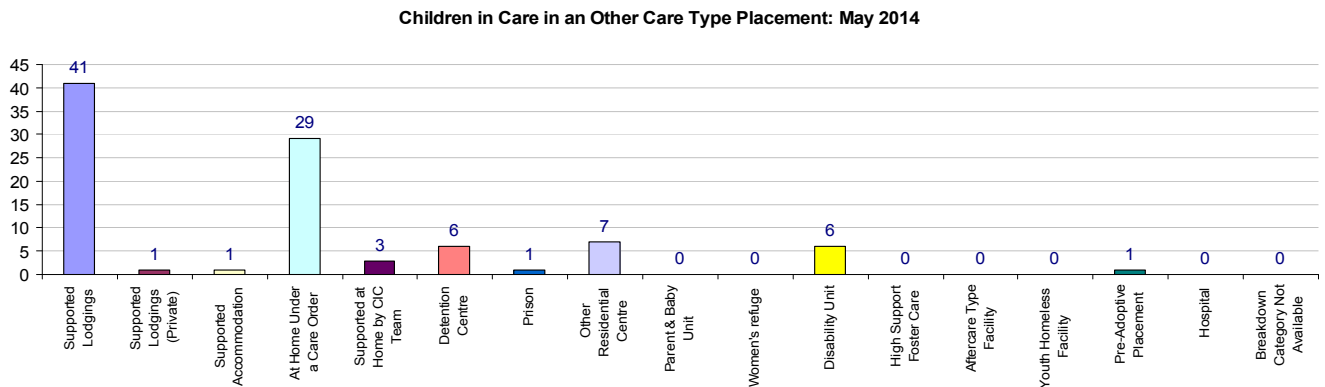




Some examples of “Other Care Placements” include:

- Children who may be at home on a care order under supervision as part of a re-unification plan;
- Young people subject to a care order but currently in a detention centre due to their offending behaviour;
- Young people placed in supported lodgings;
- Placement in a residential centre for young people with a disability.

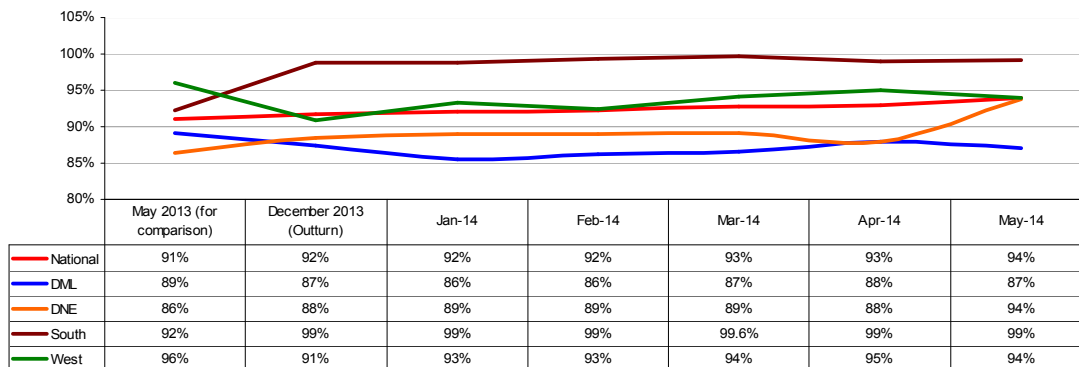
A breakdown of the return for the 96 “other care” placements is demonstrated in the chart below:



## 1.2 Number and Percentage of Children in Care with an Allocated Social Worker

In accordance with the national standards for foster care, 100% of children in care must have an allocated social worker. 94% (6,116) of children in care (6,517) were allocated a social worker at the end of May, an increase of 183 children on the December figure of 92% (5,933/6,460). This compares to 91% (5,859/6,441) of all children in care in May 2013, an increase of 257 children overall with an allocated worker. The following is a regional breakdown of the % of children in care with an allocated social worker on the 31<sup>st</sup> May 2014:

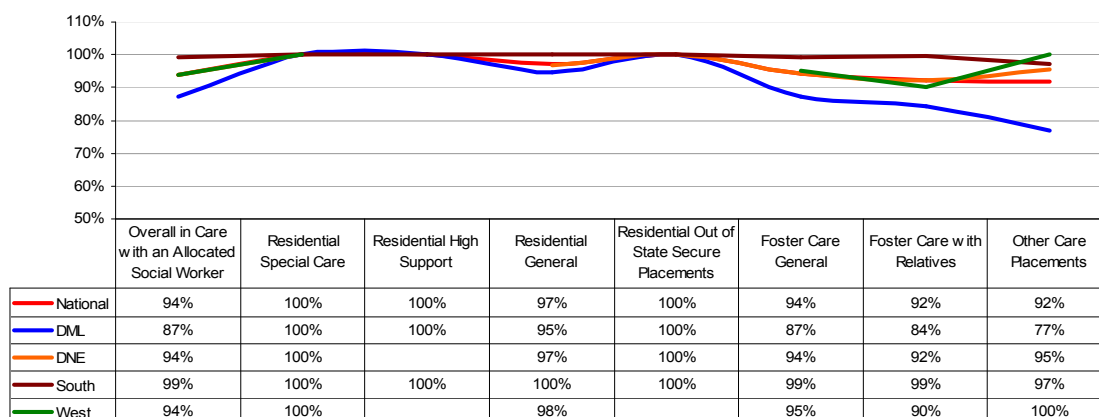
Percentage of Children in Care with an Allocated Social Worker : 2014



- DML: 87% (1,357/1,559). Performance was below 80% in Dublin South West/Kildare West Wicklow at 76% (364/477).
- DNE: 94% (1,419/1,512). No area demonstrated a performance below 80%. Cavan Monaghan who demonstrated a % of 52% (96/186) in April met the 100% target in May.
- South: 99% (1,938/1,954). No Area demonstrated a performance below 80%. Kerry met the target (100%)
- West: 94% (1,402/1,492). No Area demonstrated a performance below 80%. Mayo; Donegal and Sligo Leitrim West Cavan met the target (100%)

There are a number of social work posts which have been approved for filling. 89 posts nationally have been approved and are being processed by the National Recruitment Service; 24 in Dublin Mid Leinster, 24 in Dublin North East, 20 in the South and 21 in the West. In addition to existing approved vacancies, the absence of 84 social work staff on maternity leave (25 in DML; 25 in DNE; 16 in the South and 18 in the West) is continuing to have a significant impact on the capacity of some areas to allocate a social worker to all children in care. There are 93 Agency staff employed to cover these 173 vacancies when maternity leaves are included.

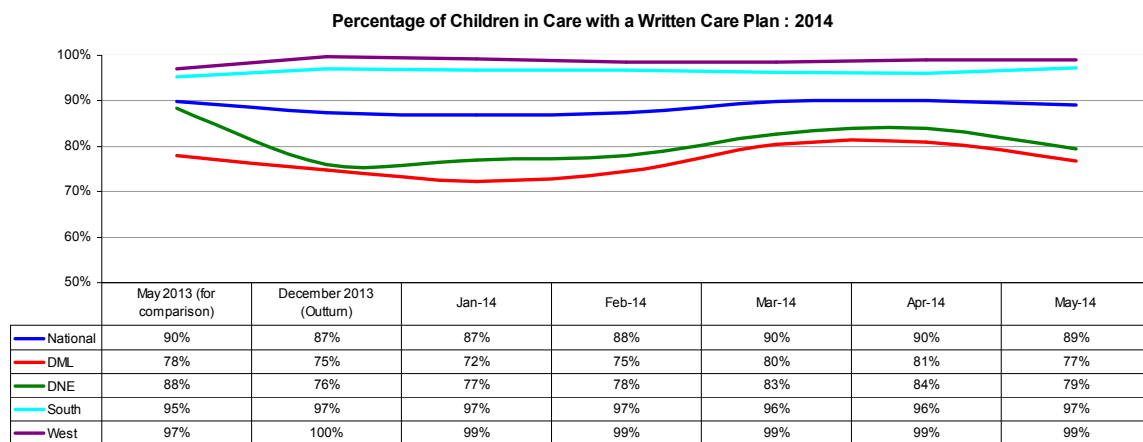
**Percentage of Children in Care by Care Type with an Allocated Social Worker : May 2014**



- (i) No. and % of children in residential special care with an allocated social worker:** 100% (16) of the children in care in residential special care at the end of May had an allocated social worker;
- (ii) No. and % of children in high support with an allocated social worker:** 100% (3) of the children in care in residential high support at the end of May had an allocated social worker;
- (iii) No. and % of children in residential general care with an allocated social worker:** 97% (331/341) of the children in care in residential general care at the end of May had an allocated social worker;
- (iv) No. and % of children in residential out of state secure placements with an allocated social worker:** 100% (7) of the children in care in residential out of state secure placements at the end of May had an allocated social worker;
- (v) No. and % of children in foster care general with an allocated social worker:** 94% (3,948/4,182) of the children in care in foster care general at the end of May had an allocated social worker;
- (vi) No. and % of children in foster care with relatives with an allocated social worker:** 92% (1,723/1,872) of the children in care in foster care with relatives at the end of May had an allocated social worker;
- (vii) No. and % of children in other care placements with an allocated social worker:** 92% (88/96) of the children in care in other care placements at the end of May had an allocated social worker

### 1.3 Number and Percentage of Children in Care with a Written Care Plan

The target for 2014 is that 90% of children in care will have a written care plan. 89% (5,772) of the total number of children in care (6,517) had a written care plan at the end of May. The May 2014 percentage of children in care with a written care plan was up on the December figure (87%), and down on the May 2013 figure (90%). The number of children with an up to date care plan decreased in the last month by 96 from 5,868 when the target of 90% was reached.



- DML: 77% (1,196/1,559). Performance was below 70% in Dublin South West/Kildare West Wicklow at 57% (273/477). The Midlands (100%) met the 90% target
- DNE: 79% (1,200/1,512). Performance was below 70% in Dublin North at 70% (213/306) and Cavan Monaghan at 68% (127/187). Dublin City North met the target of 90%.
- South 97% (1,900/1,954). All areas exceeded the target of 90% with Carlow Kilkenny South Tipperary returning 100%.
- West 99% (1,476/1,492). No Area demonstrated a performance below 70%. Mayo and Donegal returned 100% and all the remaining areas exceeded the target

Vacancies and available staffing in some areas continue to adversely affect performance. This is particularly notable in Cavan/Monaghan and Dublin South West/Kildare West Wicklow where difficulties will remain without an increase in staffing levels. The drop in percentage of children with a written care plan refers to plans which have gone out of date in the month under review. The number of out of date care plans in DML and DNE were due to the number which were due and could not be completed on time due to reduced staffing levels. Cavan/Monaghan have re-assigned two staff to the children in care team from the community child protection team to address these difficulties. 100% of children in care now have an allocated social worker (up from 52% in April).

- (i) **No. and % of children in residential special care with a written care plan:** 100% (16) of the children in care in residential special care at the end of May had a written care plan;
- (ii) **No. and % of children in high support with a written care plan:** 100% (3) of the children in care in residential high support at the end of May had a written care plan;
- (iii) **No. and % of children in residential general care with a written care plan:** 89% (303/341) of the children in care in residential general care at the end of May had a written care plan;
- (iv) **No. and % of children in residential out of state secure placements with a written care plan:** 100% (7) of the children in care in residential out of state secure placements at the end of May had a written care plan;
- (v) **No. and % of children in foster care general with a written care plan:** 89% (3,724/4,182) of the children in care in foster care general at the end of May had a written care plan;
- (vi) **No. and % of children in foster care with relatives with a written care plan:** 87% (1,634/1,872) of the children in care in foster care with relatives at the end of May had a written care plan;
- (vii) **No. and % of children in other care placements with a written care plan:** 89% (85/96) of the children in care in other care placements at the end of May had a written care plan

## Appendix 1: National Performance Scorecard

National Performance Scorecard 2014: <u>May</u>	Data Timing	Outturn 2013	Target or Estimated Activity Levels (EAL) 2014	Performance YTD			Performance this M/Q		
				Target/EAL YTD	Activity YTD	% var Activity YTD v Target/EAL YTD	Target/EAL this Month or Quarter	Actual this Month or Quarter	% var reported activity v Target/EAL this Month or Quarter
<b>Children in Care: Residential and Foster Care</b>	<b>M</b>		Estimated Activity Levels						
The number of children in care overall at the end of the reporting period	M	6,460	6,460	6,460	<b>6,517</b>	0.9%	6,460	<b>6,517</b>	0.9%
The number of children in Residential Special Care at the end of the reporting period	M	25			<b>16</b>			<b>16</b>	
The percentage of children in care in Residential Special Care at the end of the reporting period	M	0.4%	0.4%	0.4%	<b>0.2%</b>	-39%	0.4%	<b>0.2%</b>	-39%
The number of children in Residential High Support at the end of the reporting period	M	7			<b>3</b>			<b>3</b>	
The percentage of children in care in Residential High Support at the end of the reporting period	M	0.1%	0.1%	0.1%	<b>0.05%</b>	-54%	0.1%	<b>0.05%</b>	-54%
The number of children in Residential General Care at the end of the reporting period	M	324			<b>341</b>			<b>341</b>	
The percentage of children in care in Residential General Care at the end of the reporting period	M	5.0%	5%	5%	<b>5%</b>	0%	5%	<b>5%</b>	0%
The number of children in Residential Out of State Secure Placement at the end of the reporting period	M				<b>7</b>			<b>7</b>	
The percentage of children in care in Residential Out of State Secure Placement at the end of the reporting period	M				<b>0.1%</b>			<b>0.1%</b>	

National Performance Scorecard 2014: <u>May</u>	Data Timing	Outturn 2013	Target or Estimated Activity Levels (EAL) 2014	Performance YTD			Performance this M/Q		
				Target/EAL YTD	Activity YTD	% var Activity YTD v Target/EAL YTD	Target/EAL this Month or Quarter	Actual this Month or Quarter	% var reported activity v Target/EAL this Month or Quarter
The number of children in Foster Care General at the end of the reporting period	M	4,140			<b>4,182</b>			<b>4,182</b>	
The percentage of children in care in Foster Care General at the end of the reporting period	M	64.1%	64%	64%	<b>64%</b>	0%	64%	<b>64%</b>	0%
The number of children in Foster Care with Relatives at the end of the reporting period	M	1,858			<b>1,872</b>			<b>1,872</b>	
The percentage of children in care in Foster Care with Relatives at the end of the reporting period	M	28.8%	28.8%	28.8%	<b>29%</b>	0%	28.8%	<b>29%</b>	0%
The number of children in Other Care Placements at the end of the reporting period	M	106			<b>96</b>			<b>96</b>	
The percentage of children in care in Other Care Placements at the end of the reporting period	M	1.6%	1.7%	1.7%	<b>1%</b>	-13%	1.7%	<b>1%</b>	-13%
<b>Children in Care: with an Allocated Social Worker</b>	<b>M</b>								
Number of children in care overall who have an allocated social worker at the end of the reporting period	M	5,933			<b>6,116</b>			<b>6,116</b>	
% children in care overall who have an allocated social worker at the end of the reporting period	M	91.8%	100%	100%	<b>94%</b>	-6%	100%	<b>94%</b>	-6%
Number of children in Residential Special Care who have an allocated social worker at the end of the reporting period	M	25			<b>16</b>			<b>16</b>	

National Performance Scorecard 2014: <u>May</u>	Data Timing	Outturn 2013	Target or Estimated Activity Levels (EAL) 2014	Performance YTD			Performance this M/Q		
				Target/EAL YTD	Activity YTD	% var Activity YTD v Target/EAL YTD	Target/EAL this Month or Quarter	Actual this Month or Quarter	% var reported activity v Target/EAL this Month or Quarter
The percentage of children in Residential Special Care with an Allocated Social Worker at the end of the reporting period	M	100%	100%	100%	<b>100%</b>	0%	100%	<b>100%</b>	0%
Number of children in Residential High Support who have an allocated social worker at the end of the reporting period	M	7			<b>3</b>			<b>3</b>	
The percentage of children in Residential High Support with an Allocated Social Worker at the end of the reporting period	M	100%	100%	100%	<b>100%</b>	0%	100%	<b>100%</b>	0%
Number of children in Residential General Care who have an allocated social worker at the end of the reporting period	M	313			<b>331</b>			<b>331</b>	
The percentage of children in Residential General Care with an Allocated Social Worker at the end of the reporting period	M	96.6%	100%	100%	<b>97%</b>	-3%	100%	<b>97%</b>	-3%
Number of children in Residential Care Out of State Secure Placement who have an allocated social worker at the end of the reporting period	M				<b>7</b>			<b>7</b>	
The percentage of children in Residential Care Out of State Secure Placement who have an allocated social worker at the end of the reporting period	M		100%	100%	<b>100%</b>	0%	100%	<b>100%</b>	0%
Number of children in Foster Care General who have an allocated social worker at the end of the reporting period	M	3,823			<b>3,948</b>			<b>3,948</b>	
The percentage of children in Foster Care General with an Allocated Social Worker at the end of the reporting period	M	92.3%	100%	100%	<b>94%</b>	-6%	100%	<b>94%</b>	-6%



National Performance Scorecard 2014: <u>May</u>	Data Timing	Outturn 2013	Target or Estimated Activity Levels (EAL) 2014	Performance YTD			Performance this M/Q		
				Target/EAL YTD	Activity YTD	% var Activity YTD v Target/EAL YTD	Target/EAL this Month or Quarter	Actual this Month or Quarter	% var reported activity v Target/EAL this Month or Quarter
Number of children in Foster Care with Relatives who have an allocated social worker at the end of the reporting period	M	1,661			1,723			1,723	
The percentage of children in Foster Care with Relatives with an Allocated Social Worker at the end of the reporting period	M	89.4%	100%	100%	92%	-8%	100%	92%	-8%
Number of children in Other Care Placements who have an allocated social worker at the end of the reporting period	M	104			88			88	
The percentage of children in Other Care Placements with an Allocated Social Worker at the end of the reporting period	M	98.1%	100%	100%	92%	-8%	100%	92%	-8%
<b>Children in Care: With a Written Care Plan</b>	<b>M</b>								
Number of children in care overall who have an a written care plan at the end of the reporting period	M	5,646			5,772			5,772	
% children in care who currently have a written care plan at the end of the reporting period	M	87.4%	90%	90%	89%	-2%	90%	89%	-2%
Number of children in Residential Special Care who have a written care plan at the end of the reporting period	M	25			16			16	
The percentage of children in Residential Special Care who currently have a written care plan at the end of the reporting period	M	100%	100%	100%	100%	0%	100%	100%	0%

National Performance Scorecard 2014: <u>May</u>	Data Timing	Outturn 2013	Target or Estimated Activity Levels (EAL) 2014	Performance YTD			Performance this M/Q		
				Target/EAL YTD	Activity YTD	% var Activity YTD v Target/EAL YTD	Target/EAL this Month or Quarter	Actual this Month or Quarter	% var reported activity v Target/EAL this Month or Quarter
Number of children in Residential High Support who have a written care plan at the end of the reporting period	M	7			3			3	
The percentage of children in Residential High Support who currently have a written care plan at the end of the reporting period	M	100.0%	90%	90%	100%	11%	90%	100%	11%
Number of children in Residential General Care who have a written care plan at the end of the reporting period	M	279			303			303	
The percentage of children in Residential General Care who currently have a written care plan at the end of the reporting period	M	86.1%	90%	90%	89%	1%	90%	89%	1%
Number of children in Residential Care Out of State Secure Placement who currently have a written care plan at the end of the reporting period	M				7			7	
The percentage of children in Residential Care Out of State Secure Placement who currently have a written care plan at the end of the reporting period	M		100%	100%	100%	0%	100%	100%	0%
Number of children in Foster Care General who have a written care plan at the end of the reporting period	M	3,660			3,724			3,724	
The percentage of children in Foster Care General who currently have a written care plan at the end of the reporting period	M	88.4%	90%	90%	89%	-1%	90%	89%	-1%

National Performance Scorecard 2014: <u>May</u>	Data Timing	Outturn 2013	Target or Estimated Activity Levels (EAL) 2014	Performance YTD			Performance this M/Q		
				Target/EAL YTD	Activity YTD	% var Activity YTD v Target/EAL YTD	Target/EAL this Month or Quarter	Actual this Month or Quarter	% var reported activity v Target/EAL this Month or Quarter
Number of children in Foster Care with Relatives who have a written care plan at the end of the reporting period	M	1,585			<b>1,634</b>			<b>1,634</b>	
The percentage of children in Foster Care with Relatives who currently have a written care plan at the end of the reporting period	M	85.3%	90%	90%	<b>87%</b>	-3%	90%	<b>87%</b>	-3%
Number of children in Other Care Placements who have a written care plan at the end of the reporting period	M	90			<b>85</b>			<b>85</b>	
The percentage of children in Other Care Placements who currently have a written care plan at the end of the reporting period	M	84.9%	90%	90%	<b>89%</b>	-2%	90%	<b>89%</b>	-2%

## Appendix 2: Schedule of Metric Reporting 2014

<b>Schedule of Metric Reporting 2014.</b>	<b>Data Timing</b>
<b>Early Years Services</b>	
Number of early years services which received an annual or first inspection	Q
Percentage of early years services which received an annual or first inspection	Q
Number of notified full day early years service in operational areas	Q
Number of notified full day early years service in operational areas which received an annual or first inspection	Q
Percentage of full day early years services which received an annual or first inspection	Q
Number of early years services complaints received	Q
Percentage of complaints investigated	Q
Number of prosecutions taken on foot of an inspection; review visit or complaint received	Q
Number of early years services which received an annual or first inspection	Q
<b>Family Support Services</b>	
The number of children referred to FSS by Social Work during the reporting period	Bi- Annual (Q2 & Q4)
The number of Families referred to FSS by Social Work during the reporting period	Bi- Annual (Q2 & Q4)
The number of children referred to FSS by Other Sources during the reporting period	Bi- Annual (Q2 & Q4)
The number of Families referred to FSS by Other Sources during the reporting period	Bi- Annual (Q2 & Q4)
The number of children in receipt of FSS at the end of the reporting period	Bi- Annual (Q2 & Q4)
The number of families in receipt of FSS at the end of the reporting period	Bi- Annual (Q2 & Q4)
<b>Educational Welfare</b>	
Number of children/families supported by Education Welfare Service interventions (statutory obligations) to address general school attendance/placement issues	Annual (Q4)
Number of children/families supported by Education Welfare Service interventions (statutory obligations) to address serious/chronic school attendance issues	Annual (Q4)
<b>Children in Care in Education</b>	
The number of children in care aged 6 to 16 inclusive (at the end of the reporting period)	Q
The number of children in care aged 6 to 16 inclusive (at the end of the reporting period) in full time education	Q
The percentage of children in care aged 6 to 16 inclusive (at the end of the reporting period) in full time education	Q
The number of children in care aged 17 (at the end of the reporting period)	Q
The number of children in care aged 17 (at the end of the reporting period) in full time education	Q
The percentage of children in care aged 17 (at the end of the reporting period) in full time education	Q
<b>Children in Care: Residential and Foster Care</b>	
The number of children in care overall at the end of the reporting period	M
The number of children in Residential Special Care at the end of the reporting period	M
The percentage of children in care in Residential Special Care at the end of the reporting period	M

<b>Schedule of Metric Reporting 2014.</b>	<b>Data Timing</b>
The number of children in Residential High Support at the end of the reporting period	M
The percentage of children in care in Residential High Support at the end of the reporting period	M
The number of children in Residential General Care at the end of the reporting period	M
The percentage of children in care in Residential General Care at the end of the reporting period	M
The number of children in Foster Care General at the end of the reporting period	M
The percentage of children in care in Foster Care General at the end of the reporting period	M
The number of children in Foster Care with Relatives at the end of the reporting period	M
The percentage of children in care in Foster Care with Relatives at the end of the reporting period	M
The number of children in Other Care Placements at the end of the reporting period	M
The percentage of children in care in Other Care Placements at the end of the reporting period	M
<b>Children in Care: with an Allocated Social Worker</b>	
Number of children in care overall who have an allocated social worker at the end of the reporting period	M
% children in care overall who have an allocated social worker at the end of the reporting period	M
Number of children in Residential Special Care who have an allocated social worker at the end of the reporting period	M
The percentage of children in Residential Special Care with an Allocated Social Worker at the end of the reporting period	M
Number of children in Residential High Support who have an allocated social worker at the end of the reporting period	M
The percentage of children in Residential High Support with an Allocated Social Worker at the end of the reporting period	M
Number of children in Residential General Care who have an allocated social worker at the end of the reporting period	M
The percentage of children in Residential General Care with an Allocated Social Worker at the end of the reporting period	M
Number of children in Foster Care General who have an allocated social worker at the end of the reporting period	M
The percentage of children in Foster Care General with an Allocated Social Worker at the end of the reporting period	M
Number of children in Foster Care with Relatives who have an allocated social worker at the end of the reporting period	M
The percentage of children in Foster Care with Relatives with an Allocated Social Worker at the end of the reporting period	M
Number of children in Other Care Placements who have an allocated social worker at the end of the reporting period	M
The percentage of children in Other Care Placements with an Allocated Social Worker at the end of the reporting period	M
<b>Children in Care: With a Written Care Plan</b>	
Number of children in care overall who have a written care plan at the end of the reporting period	M
% children in care who currently have a written care plan at the end of the reporting period	M
Number of children in Residential Special Care who have a written care plan at the end of the reporting period	M
The percentage of children in Residential Special Care who currently have a written care plan at the end of the reporting period	M
Number of children in Residential High Support who have a written care plan at the end of the reporting period	M

<b>Schedule of Metric Reporting 2014.</b>	<b>Data Timing</b>
The percentage of children in Residential High Support who currently have a written care plan at the end of the reporting period	M
Number of children in Residential General Care who have a written care plan at the end of the reporting period	M
The percentage of children in Residential General Care who currently have a written care plan at the end of the reporting period	M
Number of children in Foster Care General who have a written care plan at the end of the reporting period	M
The percentage of children in Foster Care General who currently have a written care plan at the end of the reporting period	M
Number of children in Foster Care with Relatives who have a written care plan at the end of the reporting period	M
The percentage of children in Foster Care with Relatives who currently have a written care plan at the end of the reporting period	M
Number of children in Other Care Placements who have a written care plan at the end of the reporting period	M
The percentage of children in Other Care Placements who currently have a written care plan at the end of the reporting period	M
<b>Foster Carers</b>	
The total number of Foster carers General and Relative approved and on the Foster Care Panel (Part III Regs)	Q
The number of relative foster carers not approved at the end of the reporting period	Q
The number of relative foster carers where children have been placed for longer than 12 weeks whilst the foster carers are awaiting approval by the foster care panel (part III of Regs)	Q
The percentage of relative foster carers where children have been placed for longer than 12 weeks whilst the foster carers are awaiting approval by the foster care panel (part III of Regs)	Q
The number of relative foster carers not approved at the end of the reporting period who have a child placed with them (longer than 12 weeks) and have an allocated social worker	Q
The % of relative foster carers not approved at the end of the reporting period who have a child placed with them (longer than 12 weeks) and have an allocated social worker	Q
The number of relative foster carers not approved at the end of the reporting period who have a child placed with them (longer than 12 weeks) and DO NOT have an allocated social worker	Q
The % of relative foster carers not approved at the end of the reporting period who have a child placed with them (longer than 12 weeks) and DO NOT have an allocated social worker	Q
<b>After Care</b>	
The number of young adults aged 18 to 23 (inclusive) in receipt of an aftercare service on the last day of the reporting period	Q
The number of young adults aged 18 to 23 (inclusive) in receipt of an aftercare service on the last day of the reporting period who are in full time education	Q
The percentage of young adults aged 18 to 23 (inclusive) in receipt of an aftercare service who are in full time education on the last day of the reporting period	Q
The number of young adults aged 18 to 20 (inclusive) in receipt of an aftercare service on the last day of the reporting period	Q
The number of young adults aged 18 to 20 (inclusive) in receipt of an aftercare service on the last day of the reporting period who are in full time education	Q
The percentage of young adults aged 18 to 20 (inclusive) in receipt of an aftercare service who are in full time education on the last day of the reporting period	Q
<b>Child Welfare</b>	
The number of referrals of a child welfare concern	Q (In arrears)
The number of referrals of child welfare concerns where a preliminary enquiry took place within 24 hours	Q (In arrears)
The percentage of referrals of child welfare concerns where a preliminary enquiry took place within 24 hours	Q (In arrears)
The number of preliminary enquiries held (welfare concern referrals)	Q (In arrears)

<b>Schedule of Metric Reporting 2014.</b>	<b>Data Timing</b>
The number of referrals of child welfare concerns which required an initial assessment following a preliminary enquiry	Q (In arrears)
The percentage of referrals of child welfare concerns which required an initial assessment following a preliminary enquiry	Q (In arrears)
The number of initial assessments completed within 21 days of receipt of the referral	Q (In arrears)
The percentage of initial assessments completed within 21 days of receipt of the referral	Q (In arrears)
Of the total number of child welfare concerns received during the reporting period that had an initial assessment; how many were recorded with an action: child protection	Q (In arrears)
Percentage of the total number of child welfare concerns received during the reporting period that had an initial assessment that were recorded with an action: child protection	Q (In arrears)
<b>Child Protection: Abuse referrals</b>	
The number of referrals of child abuse	Q (In arrears)
The number of referrals of child abuse where a preliminary enquiry took place within 24 hours	Q (In arrears)
The percentage of referrals of child abuse where a preliminary enquiry took place within 24 hours	Q (In arrears)
The number of preliminary enquiries held (abuse referrals)	Q (In arrears)
The number of referrals of child abuse which required an initial assessment following a preliminary enquiry	Q (In arrears)
The percentage of referrals of child abuse which required an initial assessment following a preliminary enquiry	Q (In arrears)
The number of initial assessments completed within 21 days of receipt of the referral	Q (In arrears)
The percentage of initial assessments completed within 21 days of receipt of the referral	Q (In arrears)
Of the total number of child abuse received during the reporting period that had an initial assessment; how many were recorded with an action: child protection	Q (In arrears)
Percentage of the total number of child abuse received during the reporting period that had an initial assessment that were recorded with an action: child protection	Q (In arrears)
<b>Child Protection: CPNS Listing</b>	
The total number of children at the end of the reporting period who are currently listed as ACTIVE on the CPNS. (note: all children not just those listed during the quarter)	Q
<b>Crisis Intervention Services CIS (Dublin, Kildare, Wicklow)</b>	
Number of referrals made to the Crisis Intervention Service	Q
Number of children placed with the Crisis Intervention Service	Q
<b>Out of Hours (excludes Dublin, Kildare, Wicklow)</b>	
Number of referrals made to the Emergency Out of Hours Place of Safety Service	Q
Number of children placed with the Emergency Out of Hours Placement Service	Q
The total number of nights accommodation supplied by the Emergency Out of Hours Place of Safety Service	Q
<b>Adoption</b>	
Projected waiting time for assessment (i.e. from waiting list to the beginning of preparation) : Inter Country Adoption	Q
Total number of completed assessments during the reporting period : Inter Country Adoption	Q
Total number of completed assessments during the reporting period : Domestic Adoption	Q
Total number of Fostering to Adoption Assessments during the reporting period ; Domestic Adoption	
The number on waiting lists : Information & Tracing Services	Q

<b>Schedule of Metric Reporting 2014.</b>	<b>Data Timing</b>
Average length of time from waiting list to allocation: Information & Tracing Services	Q
<b>Key: Q = Reported Quarterly (March; June; September; December); Bi-Annual = Reported twice in the year Q2 (June) and Q4 (December); M = reported Monthly January to December: Annual = Reported in Q4 (December)</b>	