

# Prevention, Partnership and Family Support ,the story so Far

## The Prevention, Partnership and Family Support Programme

*Collaborative leadership for better outcomes*

**TÚSLA**

An Ghníomhaireacht um  
Leanaí agus an Teaghlach  
Child and Family Agency



# Policy Context

## TRANSFORMATIONAL GOALS

SUPPORT PARENTS

EARLIER INTERVENTION  
& PREVENTION

LISTEN TO AND  
INVOLVE CHILDREN  
& YOUNG PEOPLE

ENSURE QUALITY SERVICES

STRENGTHEN TRANSITIONS

CROSS-GOVERNMENT AND  
INTERAGENCY COLLABORATION  
& COORDINATION

STRENGTHENS THE SUPPORT  
SYSTEM AROUND THE CHILD  
AND YOUNG PERSON

## BETTER OUTCOMES

ACTIVE &  
HEALTHY

ACHIEVING  
IN ALL AREAS OF  
LEARNING &  
DEVELOPMENT

SAFE &  
PROTECTED  
FROM HARM

ECONOMIC  
SECURITY &  
OPPORTUNITY

CONNECTED,  
RESPECTED &  
CONTRIBUTING

## CROSS-CUTTING

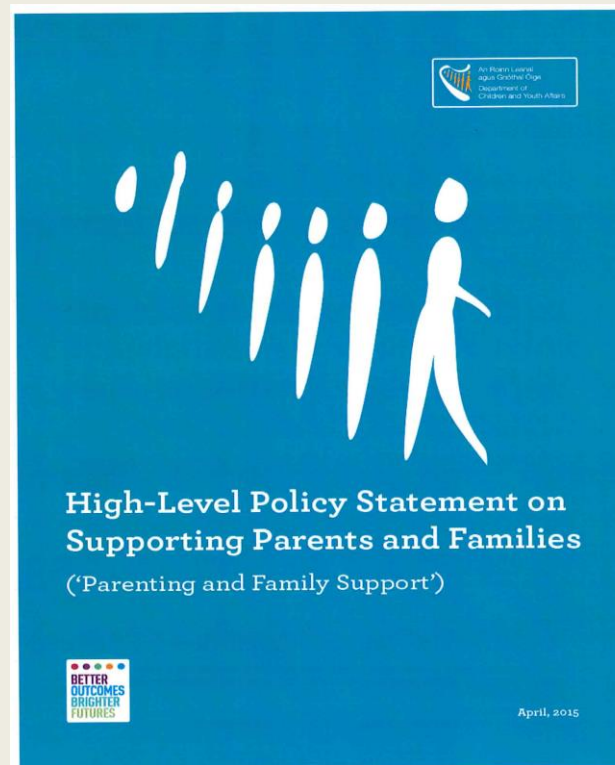


An Ghníomhaireacht um  
Leanaí agus an Teaghlach  
Child and Family Agency

## BRIGHTER FUTURES

# Policy Context

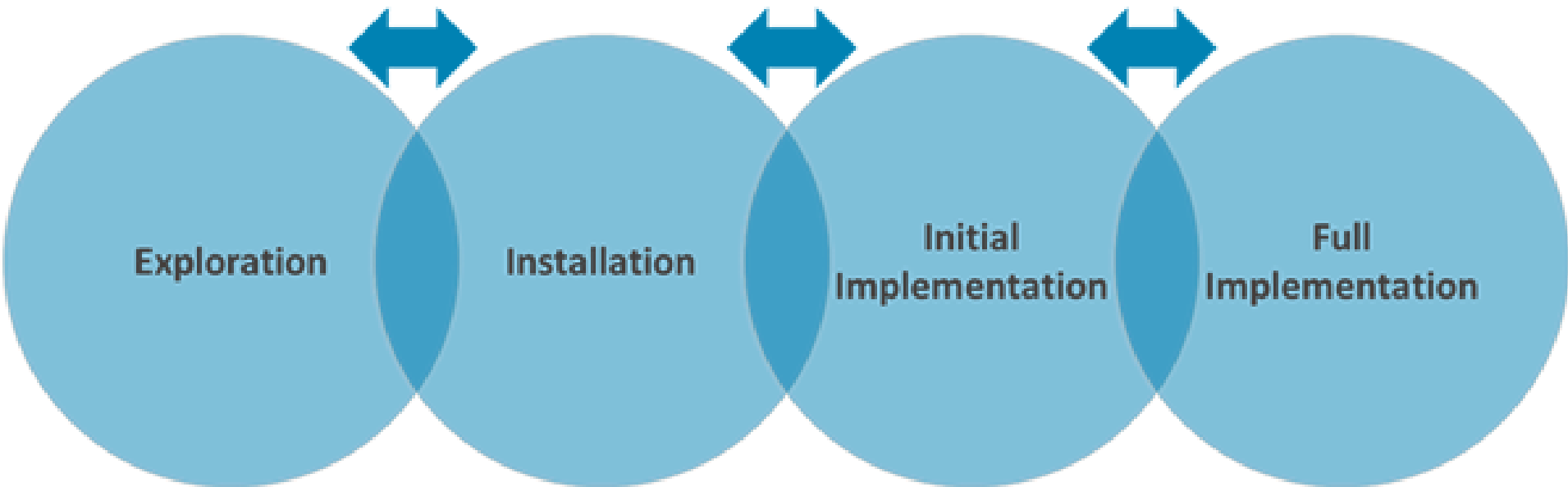
## High Level Policy Statement on Supporting Families



An Ghníomhaireacht um  
Leanaí agus an Teaghlach  
Child and Family Agency



# Implementation Stages



- **Assess needs**
- **Examine intervention components**
- **Consider Implementation Drivers**
- **Assess Fit**

- **Acquire Resources**
- **Prepare Organization**
- **Prepare Implementation Drivers**
- **Prepare Staff**

- **Adjust Implementation Drivers**
- **Manage Change**
- **Deploy Data Systems**
- **Initiate Improvement Cycles**

- **Monitor & Manage Implementation Drivers**
- **Achieve Fidelity & Outcome Benchmarks**
- **Further Improve Fidelity & Outcomes**

2-4 Years

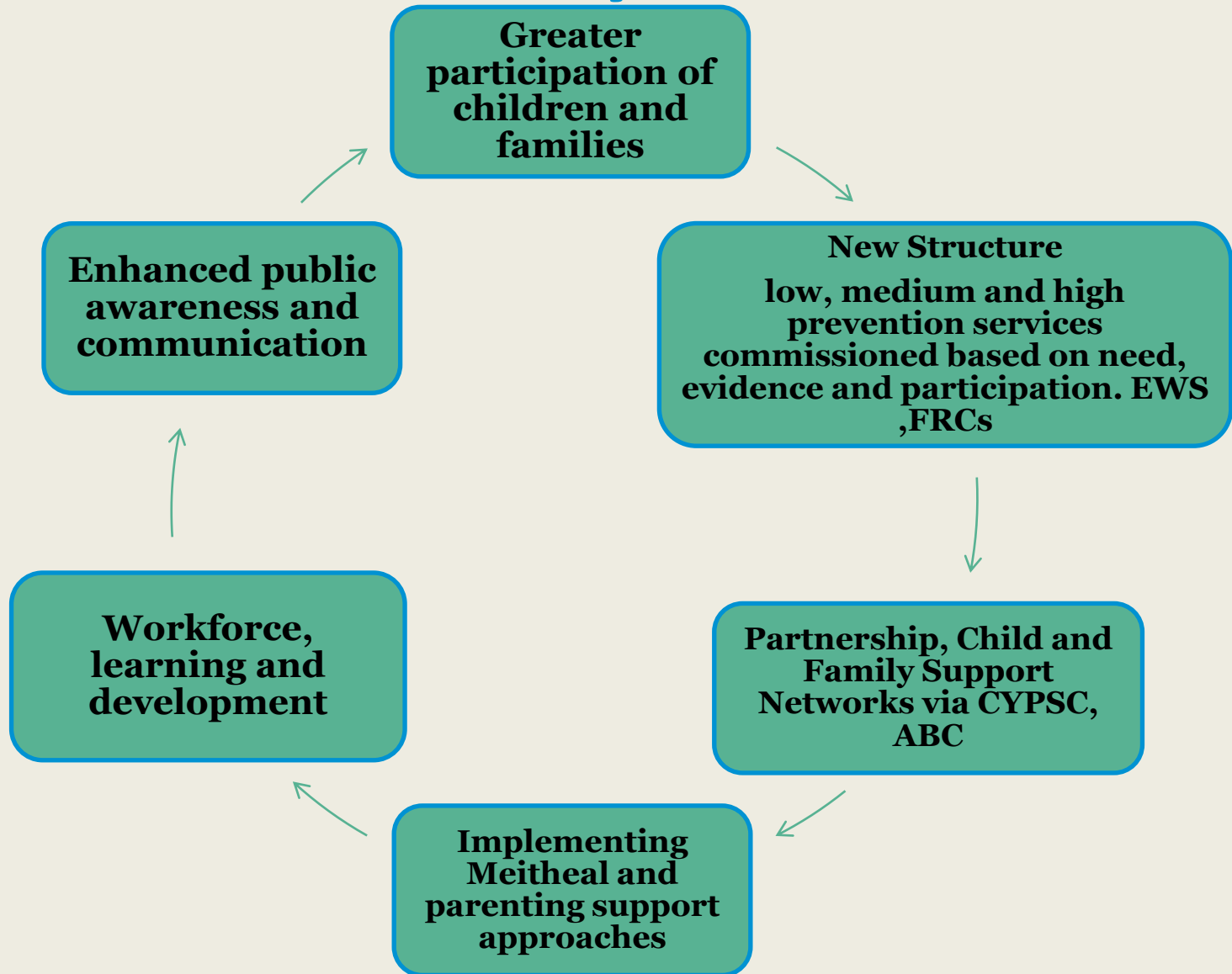
# Early Indicators of Success

- **PPFS is helping to build and integrate services within Tusla.**
- **PPFS is helping to build and integrate services within Tusla.**
- **Meitheal is helping to change practice and offering another pathway for social work and family services.**
- **Participation initiatives are driving a culture sea-change right across the Agency.**

# Early Indicators of Success

- **PPFS is underlining Parenting as a strategic priority.**
- **Commissioning marks a significant departure in how the Agency commissions services and does its business.**
- **CCA is a radical innovation that offers most potential to demonstrate the value of PEI in the short-term.**
- **Reputational Improvements**

# Summary to date



# Adverse Childhood Experience, including abuse and neglect

Injury	Anxiety disorders including PTSD	Conduct disorder	Personality disorders
Affect regulation	Mood disorders	Alcohol abuse	Relationship problems
Attachment	Disruptive behaviour disorders (e.g. ADHD)	Drug abuse	Maltreatment of one's own offspring
Growth	Academic failure	Other risk-taking behaviours	Chronic disease including heart disease, cancer
Developmental delay	Poor peer relations	Recurrent victimization	

Infancy

Childhood

Adolescence

Adulthood