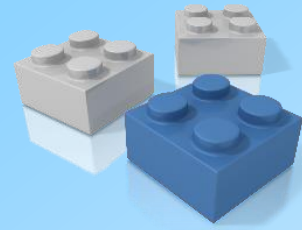




Preparing to reopen Early Years Services – Infection Control  
June 2020

Updating policies



Changes to the building

Cleaning requirements



Managing Risk

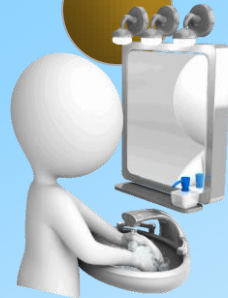


Equipment

How do I ensure my Early Years Service complies with infection control requirements after COVID-19?



Communication with parents



Hand hygiene

Waste Management



What do I do if there is an outbreak?

The Early Years inspectorate has developed guidance documentation and a checklist to help you prepare your early years service for reopening. Access this on our website

<https://www.tusla.ie/services/preschool-services/>

This short presentation is designed to help you get everything ready in relation to infection control in your early years service.



[HPSC :Infection Prevention and Control guidance for settings providing childcare during the COVID-19 Pandemic](#)

[HSE : Coronavirus \(COVID-19\)](#)

[HPSC: Management of Infectious Disease in Childcare Facilities and Other Childcare Settings](#)

[DCYA – Up to date information on COVID-19](#)

[SafeFood: Handwashing for children \(Videos\)](#)

[HSE: So you think your hands are clean? \(video\)](#)

[Tusla Early Years Newsletter : Infection Control / Handwashing](#)

[Tusla Early Years Newsletter : Single Use Aprons and Hand Hygiene](#)

<https://www.tusla.ie/services/preschool-services/>





## Preparing to reopen Early Years Services – Infection Control







## Preparing to reopen Early Years Services – Policies etc.



Infection Control Policy



Review Cleaning Schedules



Risk Management Policy



Review Staff Rosters





## Preparing to reopen Early Years Services – Infection Control

Update  
Infection  
Control Policy  
to include  
COVID-19

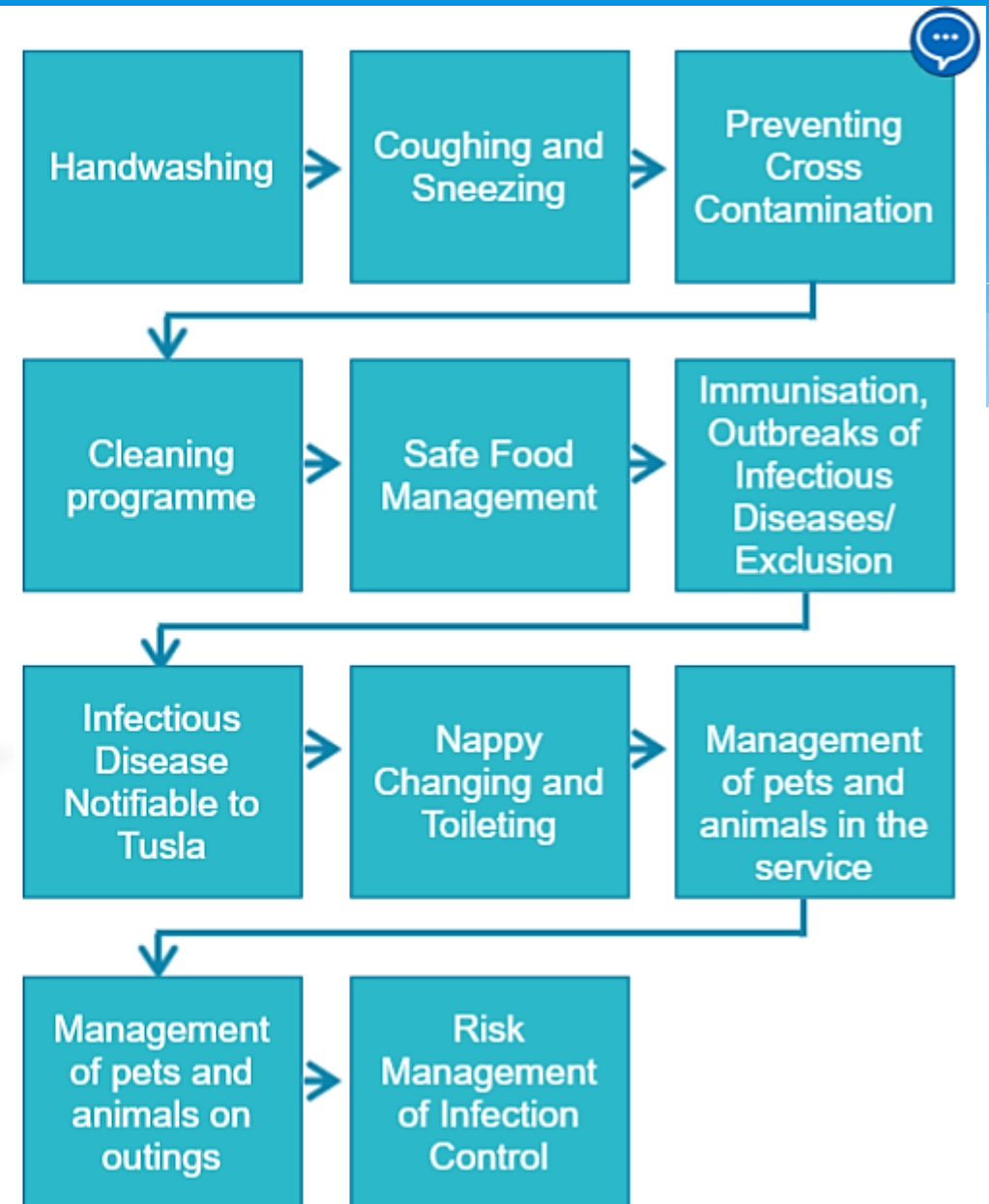
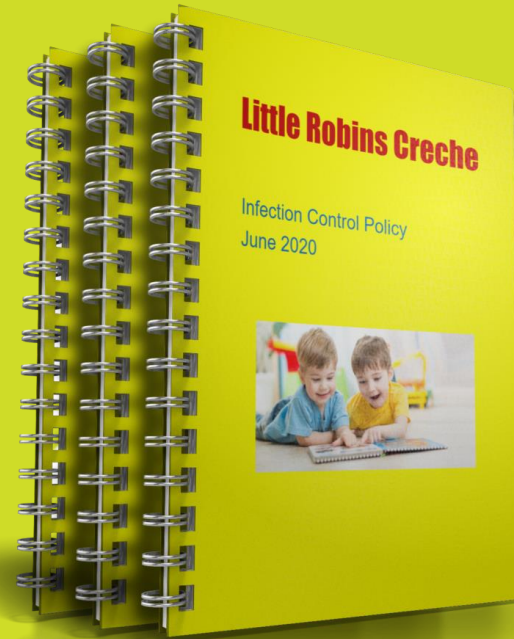
Develop an  
incident plan  
for a potential  
COVID-19  
outbreak

Update staff  
rosters to  
ensure adult :  
child ratios are  
maintained

It is vital that the service has an up to date policy on infection control. The policy needs to cover all of these elements

Download the template infection control policy directly from the Tusla website:

[Early Years Inspectorate Sample Policy on Infection Control](#)



# Hand hygiene

Adequate hand-washing facilities must be available throughout the premises

Hand sanitizer (<70% alcohol) can be used where soap and water not readily available

Staff members must wash their own hands and support children to wash theirs

HSE – How to clean your hands video

Nails should be cut short and free from polish. Fingers should be free from jewellery and acrylic nails.

Hand sanitiser must be available at the entrance to each room

Warm water (<43C), liquid soap and paper towels must be available

Further guidance  
<https://www.tusla.ie/services/preschool-services/>

Hands should be washed regularly and consistently







# Preparing to reopen Early Years Services – Personal hygiene/ respiratory etiquette

## Teach children



Teach the required steps for handwashing. Staff and children should avoid touching their eyes, nose or mouth.

<https://www.youtube.com/watch?v=Mcpm-HCIW9Q>).



## Babies

Babies & young children require close physical contact. Contact points such as neck or arms may become contaminated and these should be washed immediately. Soiled clothing should be changed, and hands washed. Children's faces, must be kept clean by careful and gentle washing.

## Games & songs

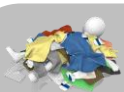


Games, songs and rhymes can be used to make practices as messaging as child friendly as possible.

## Coughing & Sneezing



Cover mouth & nose with a clean tissue when coughing and sneezing and promptly dispose of the tissue in a foot-operated pedal bin  
Tissues should be available in each care room. If tissues are not available, best practice is to cough or sneeze into the bend of the elbow



## Clean clothes

Staff must ensure they have an adequate quantity of additional clean clothes to change into if required throughout the day. Each child should also have a supply of a clean clothes available to them



## Hand-washing

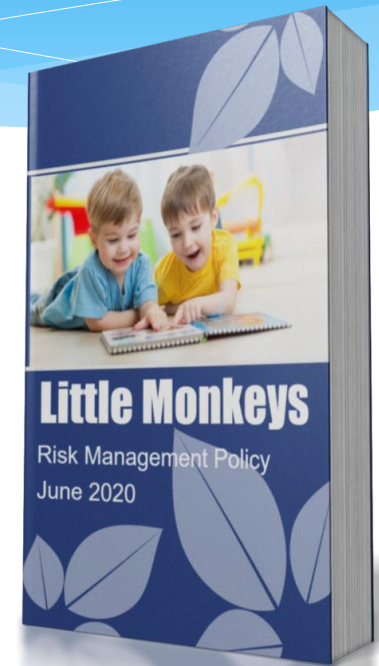
Additional handwashing is required when caring for babies or children who are teething or dribbling.



## Preparing to reopen Early Years Services – Risk Management



The risk management policy must identify potential risks and the controls needed to reduce or eliminate it.





# Preparing to reopen Early Years Services – Staff Information & Training





## Preparing to reopen Early Years Services – Staff Information & Training

Ensure staff  
have seen up  
to date policies  
and other  
documents

Ensure staff  
understand  
hand-washing  
procedures

Ensure  
everyone is  
familiar with  
drop off and  
collection  
procedures





## Preparing to reopen Early Years Services – Staff Information & Training

Ensure staff  
are familiar  
with revised  
play  
environment  
procedures

Ensure staff  
understand  
revised  
cleaning  
procedure &  
practice

Check whether  
anyone has  
symptoms or  
has come into  
contact with  
anyone with  
COVID-19



## Preparing to reopen Early Years Services – Communicating with Parents & Other Visitors



### Drop off and Collection

Advise parents about revised drop off and collection procedures and arrangements



### Infection Control

Advise parents of new infection control procedures and practices



### Covid – 19 Symptoms

Advise parents of what actions need to be taken if a child shows any COVID-19 symptoms



### Child Records

Advise parents of any changes regarding requirements for enrollment of children in the service .



### Other visitors

Establish clear procedures for contractors and other visitors to the service.



# Preparing to reopen Early Years Services - Environmental cleaning



Increase the frequency & extent of cleaning regimes



Responsibility for monitoring of cleaning agents and equipment must be designated to a named person.



Clean throughout the day especially high contact areas



Services that operate 2 sessions in a day must be thoroughly cleaned and ventilated between sessions.



Warm water and general-purpose detergent is adequate for general cleaning purposes.

**The service must be cleaned before it reopens**



## Preparing to reopen Early Years Services - Waste Management



**1**

All personal waste, including used tissues and all cleaning waste, should be placed in a plastic rubbish bag.

**2**

Bags should be tied & placed into a second bin bag and tied.

**3**

Foot-operated bins must be in all rooms.

**4**

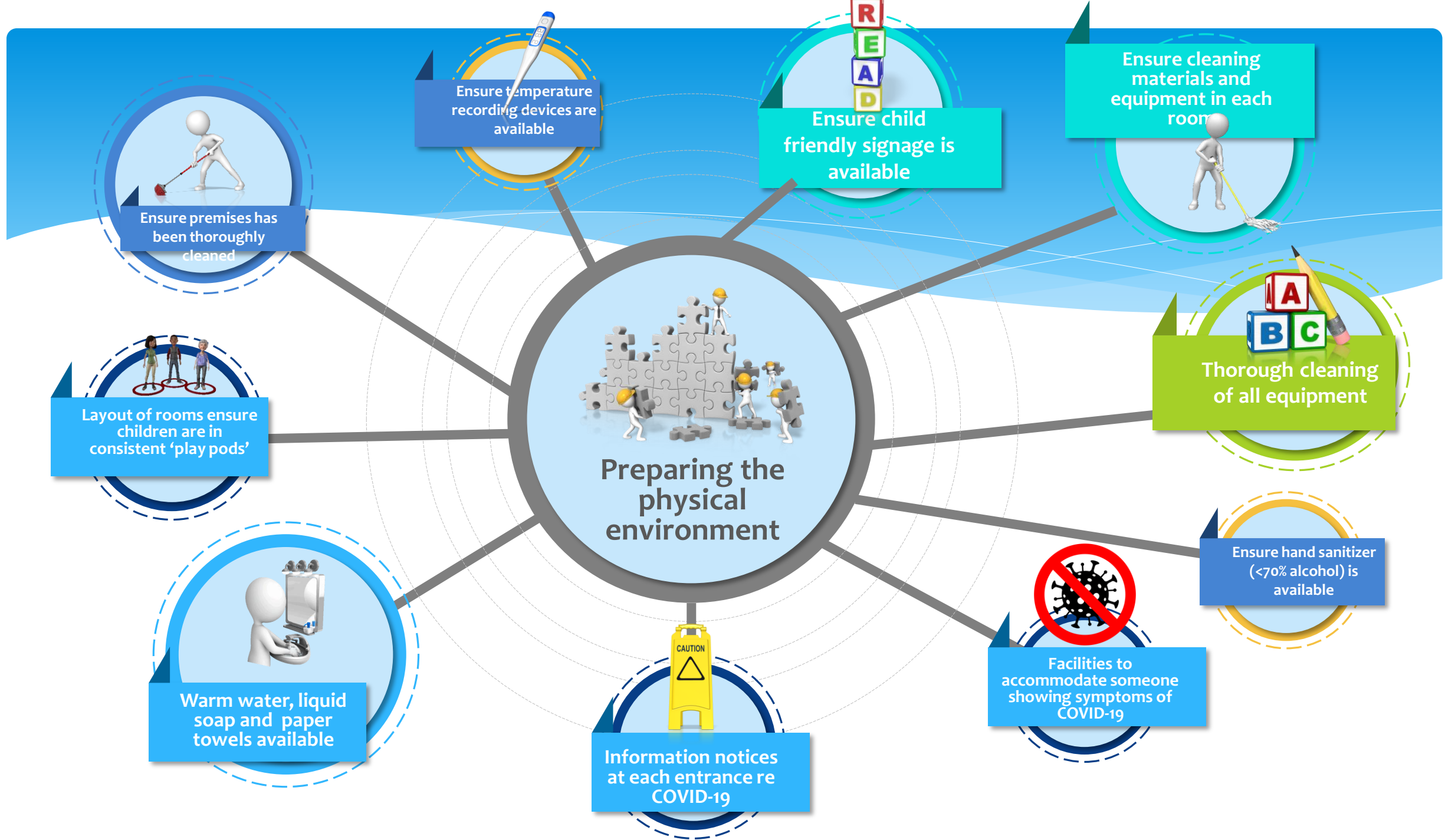
If COVID is suspected ensure a designated area for storage

**5**

Check [www.hpsc.ie](http://www.hpsc.ie) for updated guidance







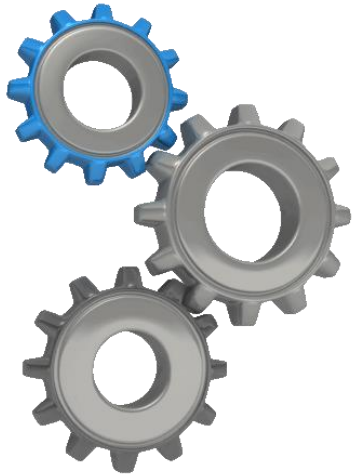


# Preparing to reopen Early Years Services - Ventilation



Windows

Rooms must be kept well ventilated by keeping windows open where possible at intervals throughout the day or by using effective mechanical ventilation.



Mechanical Ventilation

Where ventilation is by mechanical means, the correct number of air changes must take place in order to ensure that fresh air is provided and to assist in the removal of germs.

It must be maintained, and filters changed in line with the manufacturer's instructions.



## Preparing to reopen Early Years Services – Food Provision

1

**Ancillary/catering staff should not be moving between rooms. Food should be brought to the individual care rooms and served by the staff members allocated to that room.**

2

If a dining room is available mixing of different groups of children must be avoided. Use of this area should be staggered. The dining area must be cleaned between sittings.





## Preparing to reopen Early Years Services – Sleep & Rest

Cots should be arranged as normal so that there is a physical distance of 50cm between cots.

Cots should be arranged so that there is physical distance between groups of cots for children from different pods.

Cots should not be used by more than one child, Where this cannot be provided, children can use the same cot subject to strict infection control practices

Daily cleaning of mattresses and sleep mats must take place with additional cleaning required when visibly soiled.

Individual sheets and bed linen is required, and staff must be vigilant in the safe removal and laundering of soiled linen.



See <http://www.hpsc.ie/>.





## Preparing to reopen Early Years Services – Notifying the EYI

**A specific Early Years Inspectorate COVID-19 Notification Form has been developed to enable providers to advise the inspectorate**

**The notification form, along with the guidance document and the checklist can be downloaded from the Tusla, Early Years Inspectorate website**

<https://www.tusla.ie/services/preschool-services/>

**Early Years Inspectorate COVID-19 Notification Form**  
Child Care Act (Early Years Services) Regulations 2016  
Part VIII, Article 31

**Service Name:**

**Service Address:**

**TU number:**  **Date:**

Please indicate the nature of the incident

Confirmed case(s) of COVID-19 for any child attending the service ☐

Confirmed case(s) of COVID-19 for any staff member ☐

Potential closure of a service ☐

Other relevant information ☐

**Summary of the Notification**

**Actions taken by the registered provider**

**Details of person completing this report:**

**Name:**  **Contact No :**

**TUSLA**  
An Garda Síochána and  
Local Authorities  
Child and Family Agency



## Preparing to reopen Early Years Services – Notifying the EYI



Confirmed case(s) of COVID-19 for any child attending the service



Confirmed case(s) of COVID-19 for any staff member



Potential closure of a service



Any Other relevant information



The background is a blue gradient with a white wavy line at the bottom. There are five footprints of different colors (light blue, red, dark blue, green, and black) scattered across the slide.

# Thank you

<https://www.tusla.ie/services/preschool-services/>

