

TÜJSLA

Parenting Support Champions

8th Dec. 2016

Subtitle

Parenting Support Champions!

Origins of the Idea!

Review of Investing in
Parents++++

Seeing the concept in action
in Durham.

Part of a Wider Programme in Tusla to develop Prevention, Partnership and Family Support:

Prevention, Partnership and Family Support

Area Based Approach & the Meitheal National Practice Model



Early identification of need and help-provision to children and families across the continuum of care

Alternative Care Strategy

Cover all of Tusla's work

Child and Youth Participation

Parenting

Hidden Harm

Commissioning

Public Awareness

‘Supporting Parenting Work- Stream – Aims

- **Objective 1 of Tusla’s Corporate Plan**
Tusla seeks to improve the quality and focus of the delivery of services for children and families by supporting parents through ‘active interventions, cross-sectoral activities and an integrated service delivery model’.
- **Parenting Support Strategy:** Parent Participation; Parent Support Champions; 50 Key Messages; Increase in evidence-based and evidence-informed approaches to supporting parenting; Area-based approach.

‘Supporting Parenting Strategy Work-Stream – Aims

- Provision of high quality supports and services to children and their families at the earliest opportunity across all levels of need. Evidence-Informed and Evidence-based!
- Working in partnership is a very important aspect of this work.
 - ‘no wrong door’ for parents
 - all families in their locality receive easily accessible support, appropriate to meet their identified needs.

Parenting Support Champions!



Policy Context?

In the Role because of:

- Skill-base
- Significant Expertise & Experience!
- Broad range of stakeholder organisations

PSCs - Tusla's Vision

- **That good parenting knowledge becomes common knowledge.**
- **That Tusla's key messages on parenting start to filter through mainstream discourse.**
- **The key messages on parenting are made available to parents without them needing to actively seek the information.**
- **That all parents know how and where to access the support and guidance they need within their local areas**
- **That PSCs become known as people in their areas who can offer advice and guidance on parenting , they become the 'go to' people .**

PSC – The Role

- **To promote parenting**, family well being and Tusla's Parenting Support Strategy, within their area – both geographic and practice.
- **To find local opportunities** to develop approaches to supporting parenting and to disseminate the Key Messages e.g links to CYPSCs, Steering Groups under CYPSCs, CFSNs. PSCs as key voices at different tables.

Parenting Support Champions: Our Commitments to You!



TÚSLA

An Ghníomhaireacht um
Leanaí agus an Teaghlach
Child and Family Agency

Parenting Support Champions: Our Commitments to You!

Regional Learning Groups- Support you to...

- Utilise the **Key Messages in Practice**.
- **Develop the language** to bring the messages to 'hard to reach' parents and the wider public- Role of new media.
- Use the **Parent Participation Toolkit**.
- **Play your Advocacy role** as PSC and examine how that role can be developed.
- **Utilise the Prevention, Partnership and Family Support structures** within Tusla to support the development of the role.

Other components of Supporting Parenting Work-stream that we need your support with:

- **Parent Participation:** Use of the Parent Participation Toolkit and acting as expert guides and connectors.
- **Understanding best practice examples** of Supporting Parenting and bringing that information to practice and planning communities & working with others to make that information available.
- **Gap analysis on new communities** and new messaging required.
- **Your input to National Conferences** on Supporting Parenting 2017 & 2018.
- Your support in dissemination and development of the **50 Key Messages**.
- **Tusla looking for assistance and support** in developing new evidence-based approaches to supporting parents across the continuum care.

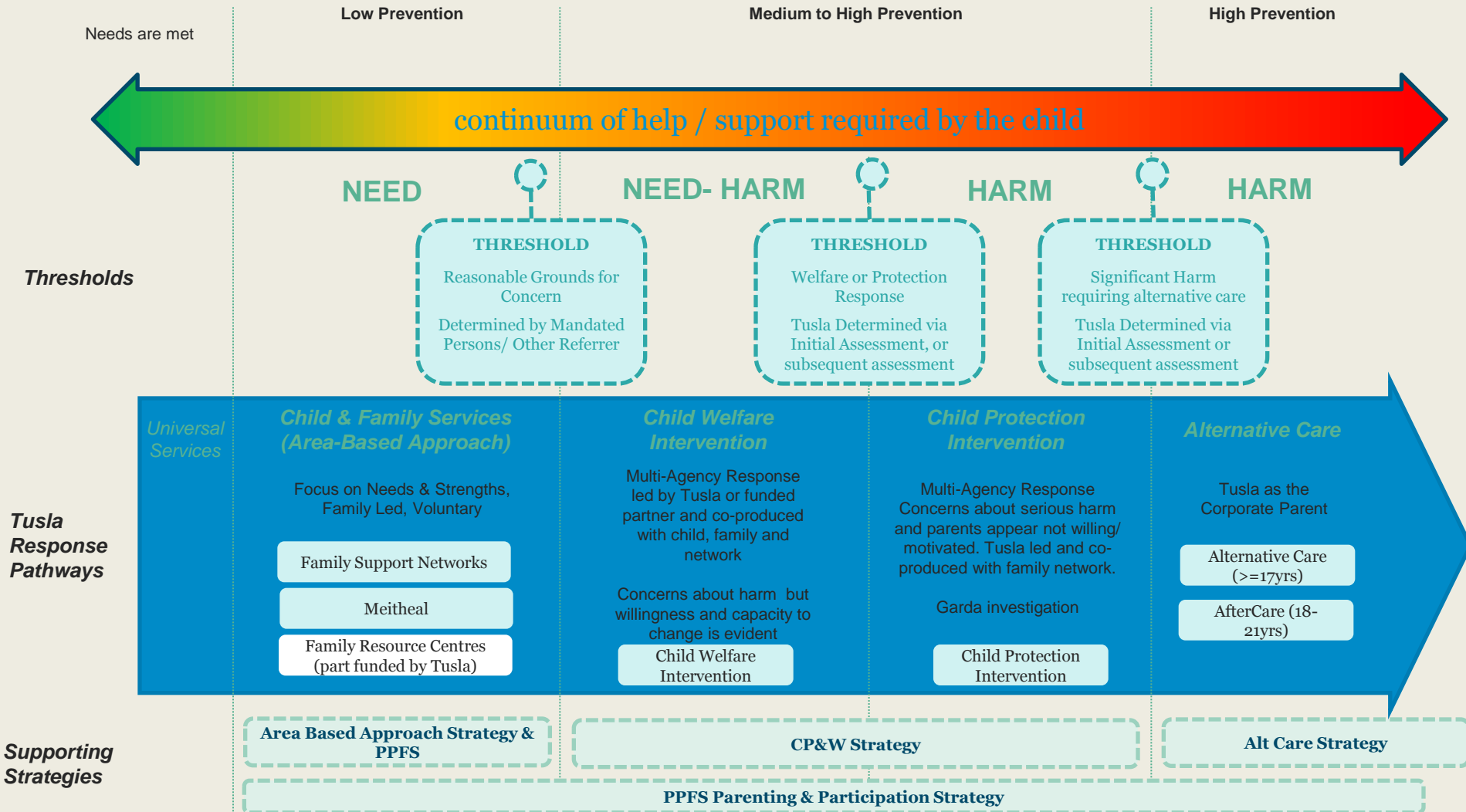


An Ghníomhaireacht um
Leanaí agus an Teaghlach
Child and Family Agency



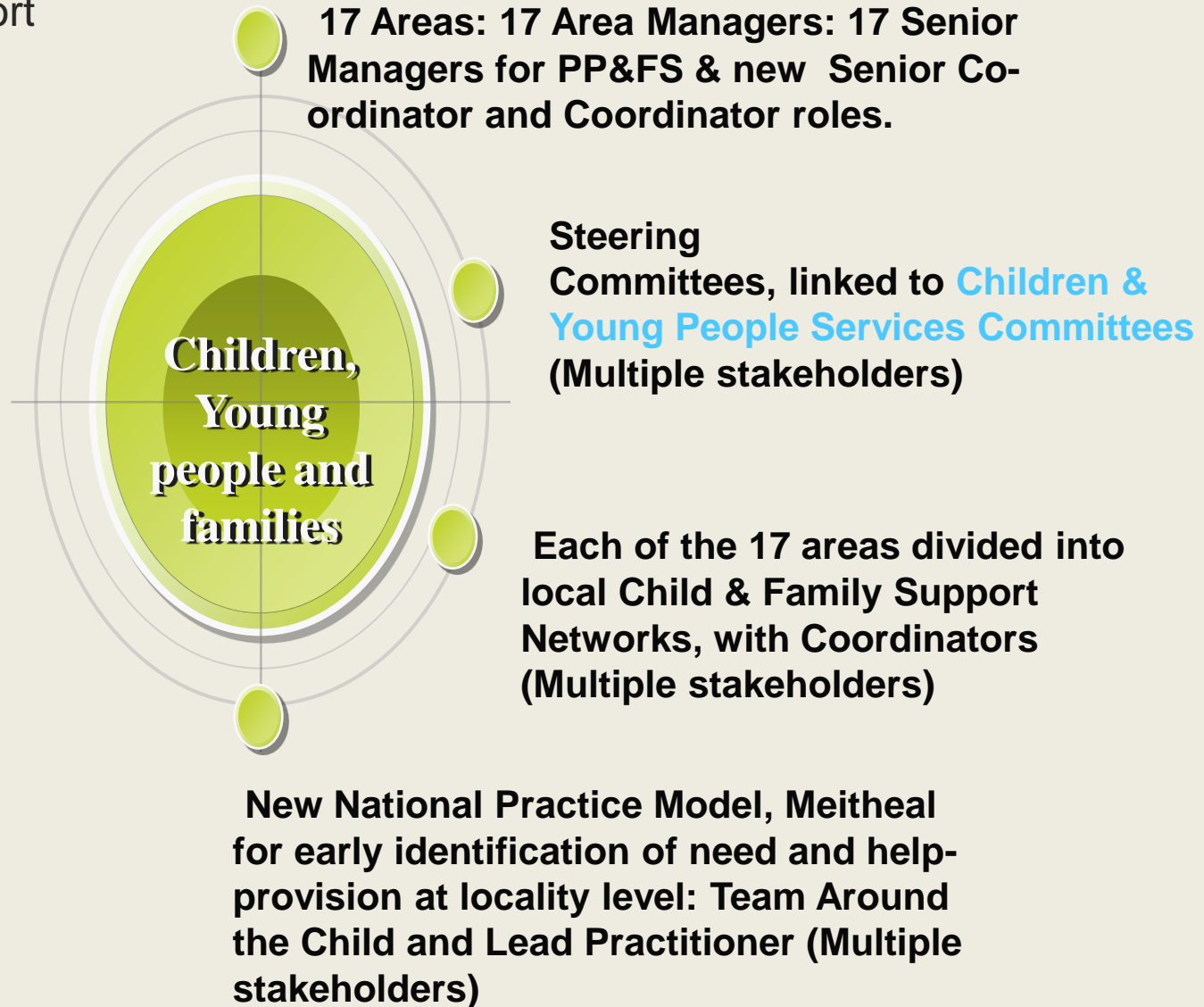
Clear Response Pathways along the Continuum of Need

Clear thresholds for child protection intervention, for transfer to/from alternative care, for closing cases, for diverting cases to other agencies, to area based approaches, etc. Clear and effective pathways through the system (end-to-end)



Tusla's Early Intervention and Prevention System:

Parenting Support
Champions



Parenting Support Making a Difference and your contribution

In 2017 effecting:

- A shift to evidence-informed and evidence-based practice.
- To Parents being supported to keep children safely at home.
- To Improved outcomes for children and parents at all levels of need.