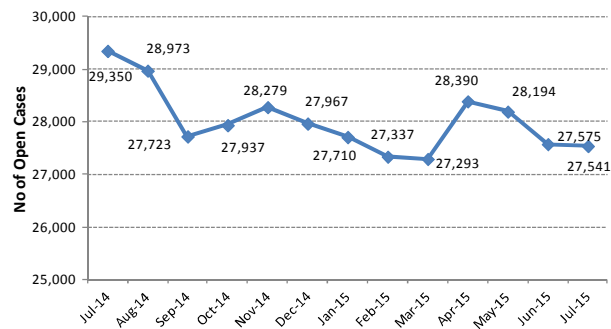
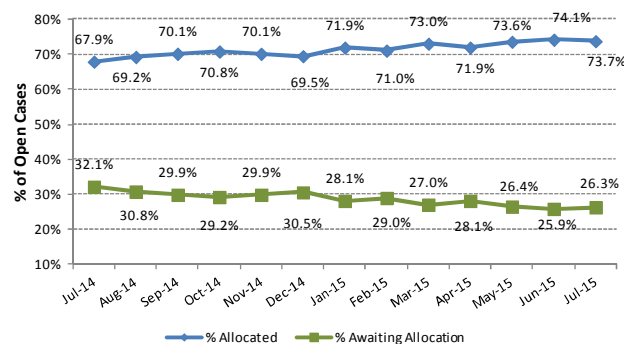


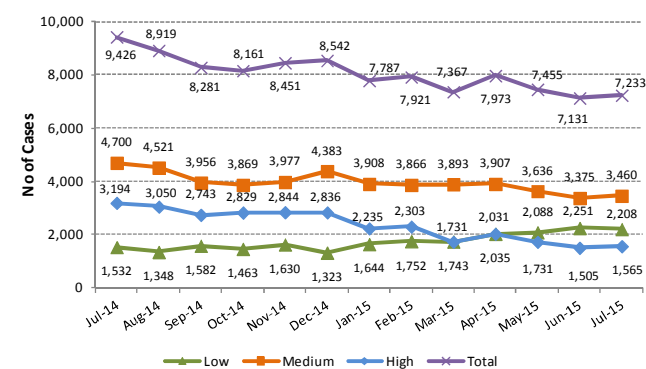
Number of Cases Open to Social Work



% of Open Cases Allocated / Awaiting Allocation to a Social Worker

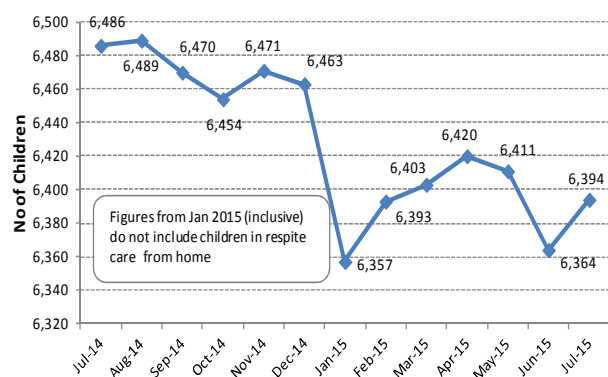


Number of Open Cases Awaiting Allocation, by Priority Level

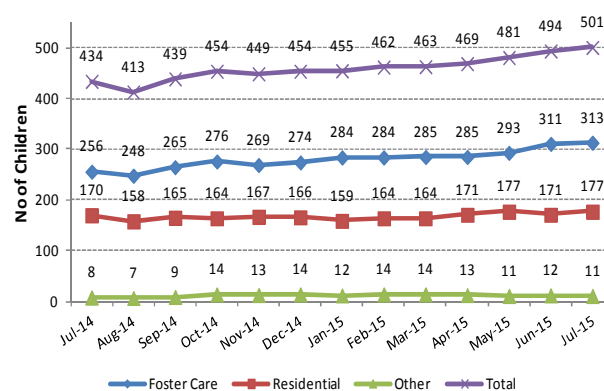


Referrals: Q1 2014 (10,853); Q2 2014 (11,450); Q3 2014 (10,384); Q4 2014 (10,943); Q1 2015 (10,993)

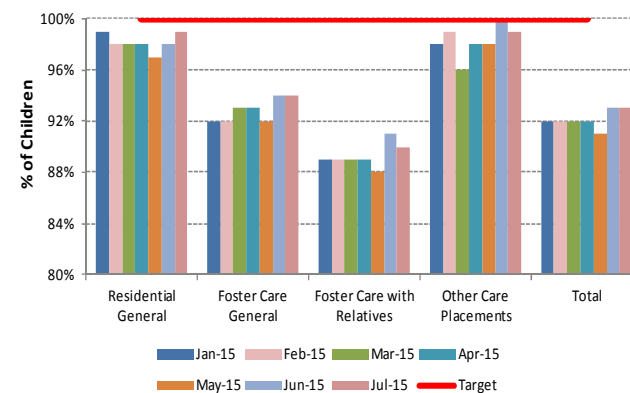
Number of Children in Care



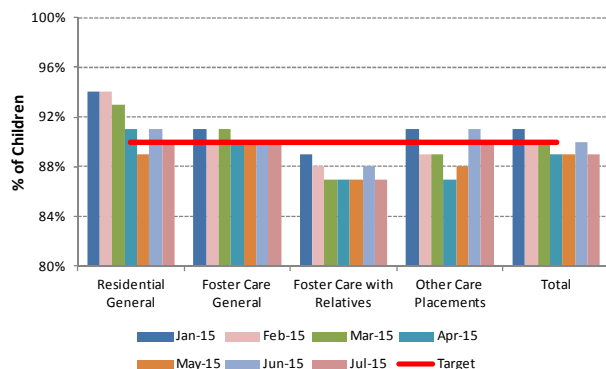
Number of Children in Private Placements, by Placement Type



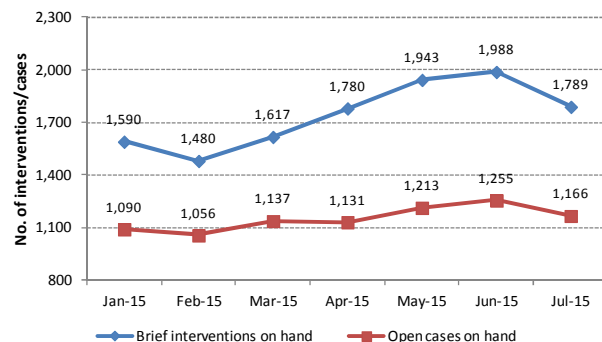
% of Children in Care with an Allocated Social Worker, by Care Type



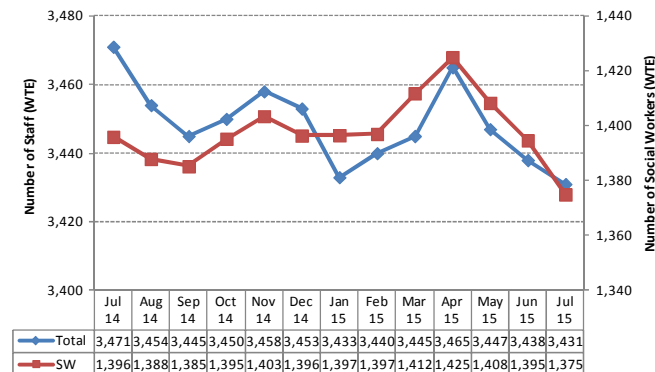
% of Children in Care with a Written Care Plan, by Care Type



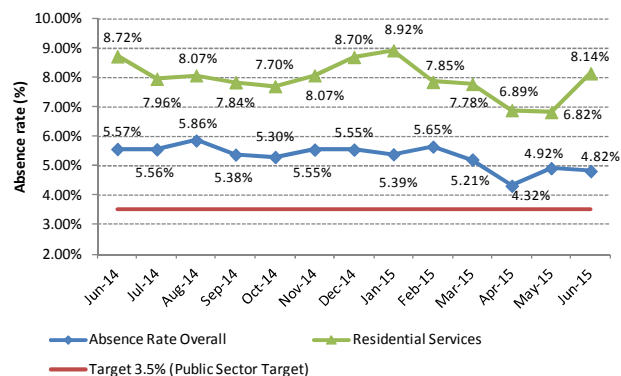
**Educational Welfare Services:
Brief interventions and cases activity, by month**



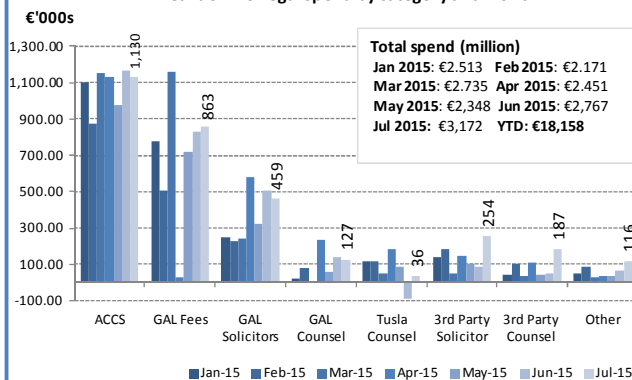
Total Staff (WTE) & Social Work (WTE), by month



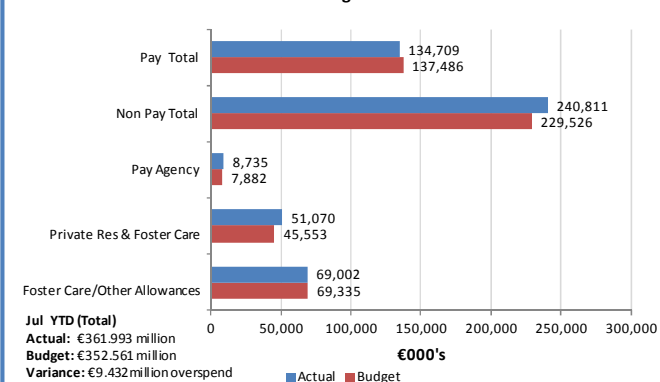
Staff Absence Rate by Month (Overall & Residential Services)



Breakdown of legal spend by category and month



Variance from Budget - Jul YTD 2015



Notes:

- Open cases include cases held on intake, allocated and unallocated child welfare and protection and children in care cases
- Chart 5: Number of children in private placements. For the purposes of this metric the number of children in private placements includes those children who have not yet reached 18 years of age on the last day of the reporting period and are in care in private foster care, private residential care, secure out of state placements and 'other' private placements.
- Absence rates are reported a month in arrears