



**An Ghníomhaireacht um
Leanaí agus an Teaghlach**
Child and Family Agency

Monthly National Performance Activity Report

August 2014

Contents

Introduction.....	3
-------------------	---

Section 1 – Performance Information

1.1 Number and Percentage of Children in Care (by care type)	5
i) Residential Special Care	6
ii) Residential High Support	6
iii) Residential General Care	6
iv) Residential Out of State Secure.....	7
v) Foster Care General.....	7
vi) Foster Care with Relatives	8
vii) Other Care Placements	9

1.2 Number and Percentage of Children in Care with an Allocated Social Worker (by care type)	10
i) Residential Special Care	11
ii) Residential High Support	11
iii) Residential General Care	11
iv) Residential Out of State Secure.....	11
v) Foster Care General.....	11
vi) Foster Care with Relatives	11
vii) Other Care Placements	11

1.3 Number and Percentage of Children in Care with a Written Care Plan (By care type)	12
i) Residential Special Care	13
ii) Residential High Support	13
iii) Residential General Care	13
iv) Residential Out of State Secure.....	13
v) Foster Care General.....	13
vi) Foster Care with Relatives	13
vii) Other Care Placements	13

Appendix 1: National Performance Scorecard	14
--------------------------------------------------	----

Appendix 2: Schedule of Metric Reporting 2014	20
-----------------------------------------------------	----

Introduction

On the 1st of January 2014 the Child and Family agency became an independent legal entity, comprising the former HSE Children and Family Services, Family Support Agency and the National Educational Welfare Board as well as incorporating specific psychology services and a range of services responding to domestic, sexual and gender based violence.

The Child and Family Agency is now the dedicated State agency responsible for improving wellbeing and outcomes for children. It represents the most comprehensive reform of child protection, early intervention and family support services ever undertaken in Ireland. It is an ambitious move which brings together some 4,000 staff and an operational budget of approximately €600m.

The Agency operates under the *Child and Family Agency Act 2013*, a progressive piece of legislation with children at its heart, and families viewed as the foundation of a strong healthy community where children can flourish. Partnership and co-operation in the delivery of seamless services to children and families are also central to the Act.

The establishment represents an opportunity to think differently, where appropriate to behave differently and to seek a wide range of views regarding the most effective way of working together to deliver a wide range of services for children and families. An approach which is responsive, inclusive and outward looking

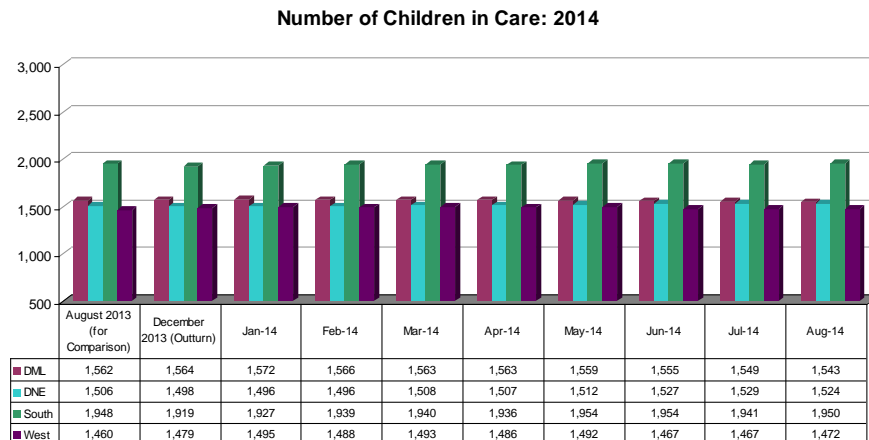
Under the Child and Family Act, 2013 the Child and Family Agency is charged with:

- supporting and promoting the development, welfare and protection of children, and the effective functioning of families;
- Offering care and protection for children in circumstances where their parents have not been able to, or are unlikely to, provide the care that a child needs. In order to discharge these responsibilities, the Agency is required to maintain and develop the services needed in order to deliver these supports to children and families, and provide certain services for the psychological welfare of children and their families;
- responsibility for ensuring that every child in the State attends school or otherwise receives an education, and for providing education welfare services to support and monitor children's attendance, participation and retention in education;
- ensuring that the best interests of the child guides all decisions affecting individual children;
- consulting children and families so that they help to shape the agency's policies and services;
- strengthening interagency co-operation to ensure seamless services responsive to needs;
- undertaking research relating to its functions, and providing information and advice to the Minister regarding those functions;
- commissioning services relating to the provision of child and family services

The monthly performance activity report will contain data which is returned and validated during the reporting period. Returns are made on a monthly, quarterly, bi-annual and annual basis. The schedule for reporting of the various metrics is contained in appendix 2.

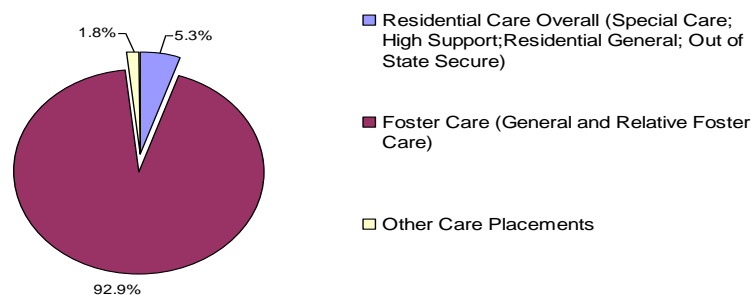
1.1 Number and percentage of Children in Care (by care type)

There were 6,489, children in care on 31st August 2014. This demonstrates a 0.05% increase over the July 2014 figure of 6,486¹ and a 0.2% increase over the August 2013 figure of 6,476.



Of the 6,489 children in care overall at the end of August 2014, 93% (6,026) of all children in care are in a foster care placement. This figure includes 4,133 (64%) in foster care general and 1,893 (29%) in relative foster care. Further analysis and breakdown of care types is provided below.

Percentage of Children in Care by Overall Care Type: August 2014



21 (0.3%) of the 6,489 children in care on 31st August were in an out of state placement. This figure comprises of 6 in a residential secure placement; 7 in a residential general placement; 3 in a foster care general placement; 3 in a relative foster carer placement and 2 in other care placements.

On the 31st August 413 (6%/6,489) of children in care were in a private care placement. Of the children in a private placement 60% (248/413) were in foster care general; 36.8% (152/413) residential general; 1.7% (7/413) other care placement and 1.5% (6/413) residential out of state secure placement.

¹ Please note that the July figure for CIC has been amended following a validation exercise post publication of the July Report

i) Residential Special Care

Of all the children in care at the end of August 0.3% (17/6,466) were in a residential special care placement. The regional breakdown of these placements was as follows: Dublin Mid Leinster 0.5% (7/1,543) Dublin North East 0.3% (4/1,524); South 0.1% (2/1,950) and the West 0.3% (4/1,472).

Special Care Unit	Location	Gender Mix of Unit	Capacity
Ballydowd	Dublin	Mixed Gender Unit	10
Coovagh House*	Limerick	Mixed Gender Unit	3
Gleann Alainn	Co Cork	Female Unit	4

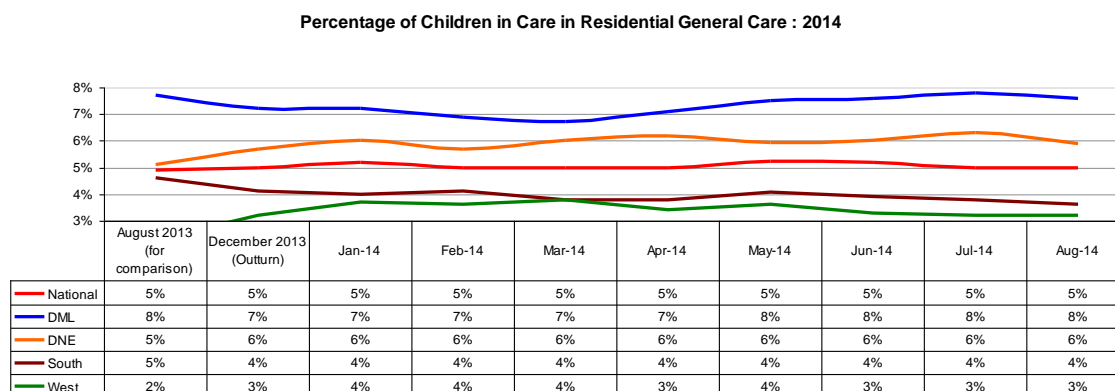
*please note increase in capacity in Coovagh House since the June report.

ii) Residential High Support

There were no children in care on the last day of August 2014 in a residential high support placement. The use of residential high support is being phased out during 2014 to create additional capacity to provide placements for young people who are assessed as requiring special care.

iii) Residential General Care

5% (324) of all children in care (6,489) at the end of August were in a residential general placement.



Of the 324 children in care in a residential care general placement, 152 (47%) are in a private placement. There has been an decrease of 11 young people placed in a private residential centre in the last month, from 163 in July. This demonstrates an increase of 37 from 115 (40%/320) since August 2013 in the use of this placement type. The percentage breakdown of children in a residential general

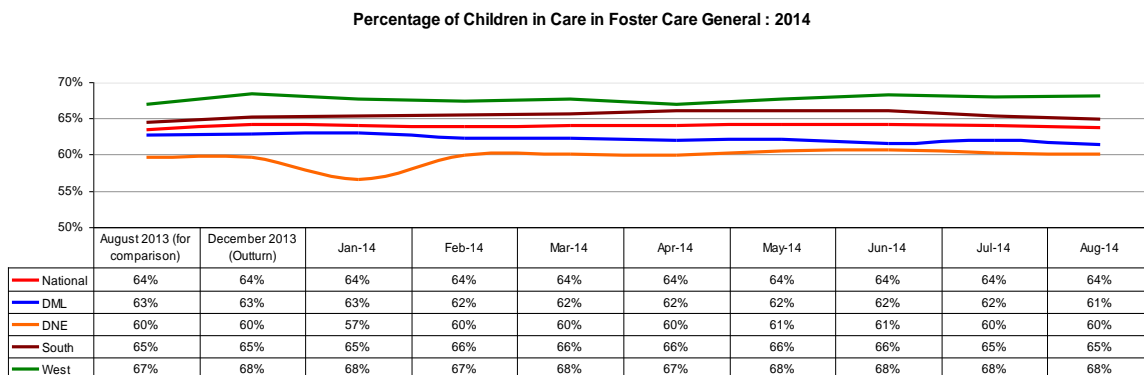
placement who are in a private placement in each region is: Dublin Mid Leinster 50% (59/117); Dublin North East 33% (30/90); South 57% (40/70); and the West 49% (23/47).

2% (7/324) of the children in residential care general placements at the end of August were in an out of state placement.

iv) Residential Out of State (Secure) Placement

At the end of August 0.1% (6) of all children in care (6,489) were in a residential out of state secure placement.

v) Foster Care General (FCG)



64% (4,133) of all children in care (6,489) at the end of August were in a foster care general placement. This equates to a decrease of 13 children in this placement type compared to revised July 2014 figure (4,146)²; but equals the December 2013 % figure of 64% (4,140) of the total percentage number of children in care at the end of 2013. The number of children in foster care general has increased by 21 from the August 2013 figure of 4,112 (63%/6,476).

248 (6%) of all children in foster care general (4,133) were in a private placement at the end of August 2014. This demonstrates an increase of 8 over the same period last year from 240 (6% of all children in foster care general at that time) and a decrease of 8 in the last month from 256 in July. The percentage of children in a private general foster care placement in each region was: Dublin Mid Leinster 14% (133/948); Dublin North East 9% (79/916); South 2% (22/1,266) and the West 1% (14/1,003)

Overall the percentage of children in foster care general in a private foster care placement has remained constant at 6%.

² Please note: following a validation exercise in the Midwest the July FCG figure has been amended since July publication.

0.1% (3/4,133) of the children in foster care general placements at the end of August was in an out of state placement.

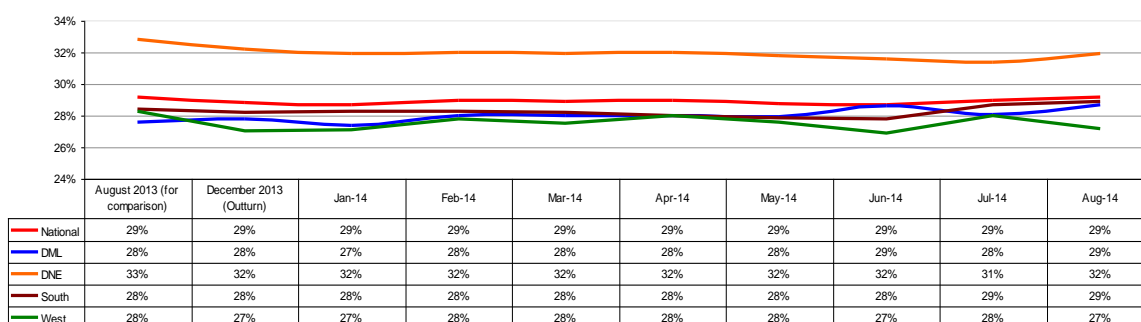
At the end of Quarter 2 2014 there were 4,246 foster carers approved and on the Foster Care Panel (Part III Regs). Of these, 2,885 (68%) were categorised as foster care general; 1,145 (27%) as relative foster carers and 216 (5%) as private carers.

Between June 2013 (2,866) and Quarter 2 2014 (2,885) there was a 1% increase in the number of foster carers (general) approved and on the Foster Carer Panel (Part III, Regs).

vi) Foster Care with Relatives (FCWR)

29% (1,893) of all children in care (6,489) at the end of August were in a FCWR placement. Based on the overall numbers of children in care, this represents an increase of 19 Children in this placement type when compared to the revised July 2014 figure (1,874)³, and an increase of 2 on the August 2013 return of 1,891 (29%/6,476 of all children in care in that reporting period). The percentage and number of children in care in a FCWR placement in each region are: DML 29% (443/1543); DNE 32% (486); South 29% (563/1950); West 27% (401/1472). 0.2% (3/1,893) were in an out of state placement.

Percentage of Children in Care in Foster Care with Relatives : 2014

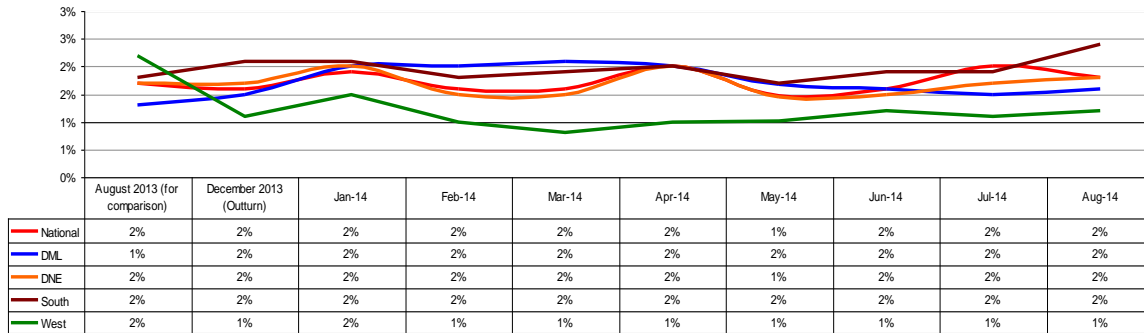


³ Please note: following a validation exercise in the Midwest the July FCWR figure has been amended since July publication.

Vii) Other Care Placements

On the 31st August 2014, 2% (116/6,489) of all children in care were in an “other” care placement, an increase of 13 since July (103).

Percentage of Children in Care in Other Care Placements : 2014



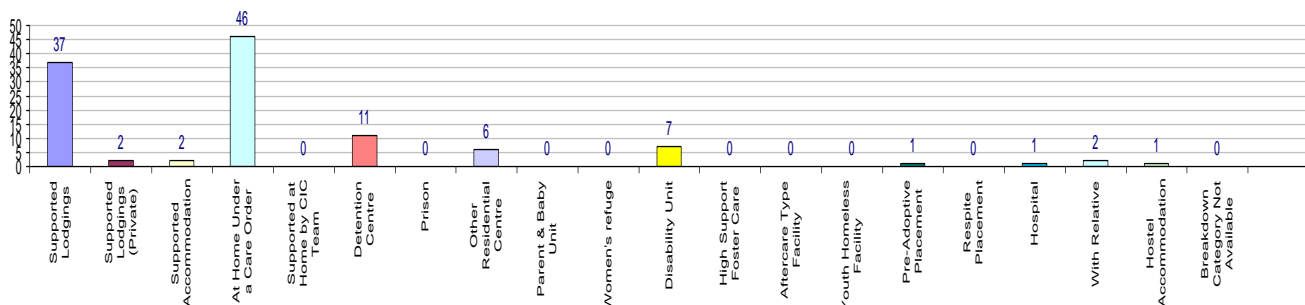
2% (2/116) of the children in other care placements at the end of August were in an out of state placement.

Some examples of “Other Care Placements” include:

- Children who may be at home on a care order under supervision as part of a re-unification plan;
- Young people subject to a care order but currently in a detention centre due to their offending behaviour;
- Young people placed in supported lodgings;
- Placement in a residential centre for young people with a disability.

A breakdown of the return for the 116 “other care” placements are demonstrated in the chart below:

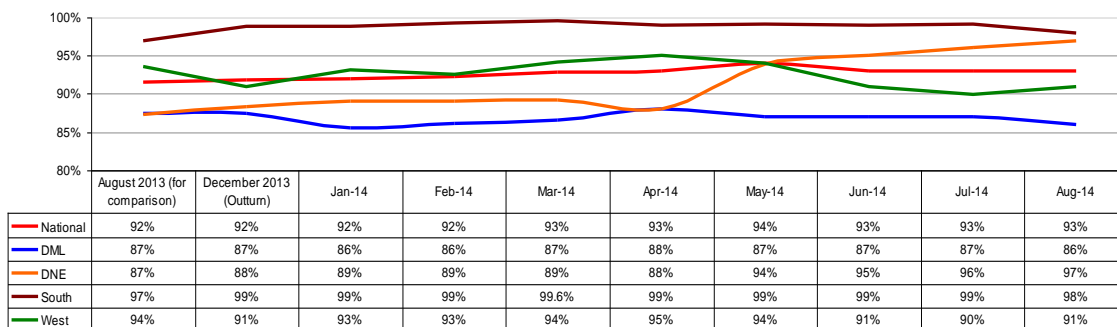
Children in Care in an Other Care Type Placement: August 2014



1.2 Number and Percentage of Children in Care with an Allocated Social Worker

In accordance with the national standards for foster care, 100% of children in care must have an allocated social worker. 93% (6,058) of children in care (6,489) were allocated a social worker at the end of August, an increase of 125 children on the December figure of 92% (5,933/6,460), but a decrease of 4 from July (6,062). This compares to 91.6% (5,934/6,476) of all children in care in August 2013, an increase of 124 children overall with an allocated worker in the last 12 months. The following is a regional breakdown of the % of children in care with an allocated social worker on the 31st August 2014:

Percentage of Children in Care with an Allocated Social Worker : 2014

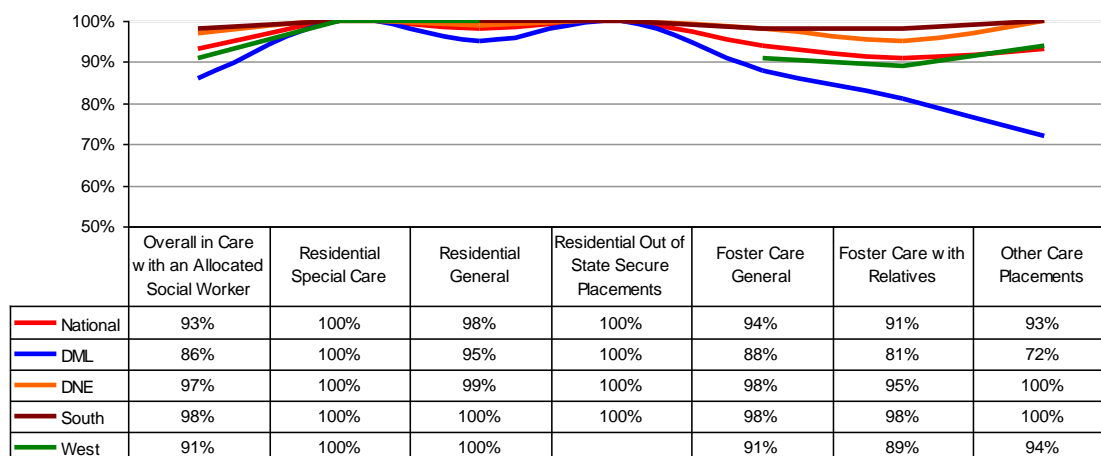


- DML: 86% (1,329/1,543). Performance was below 80% in Dublin South West/Kildare West Wicklow at 78% (377/486). No other Area demonstrated a performance below 80%.
- DNE: 97% (1,478/1,524). No area demonstrated a performance below 80%. Cavan Monaghan who demonstrated a % of 52% (96/186) in April, but has continued to meet the 100% target since May. All other areas demonstrated a return of 95% or higher.
- South: 98.3% (1,917/1,950). No Area demonstrated a performance below 80%. Kerry and Carlow Kilkenny South Tipperary continued to meet the target (100%) the remaining areas returned greater than 95%.
- West: 91% (1,334/1,472). No Area demonstrated a performance below 80%. Mayo; Donegal and Sligo Leitrim West Cavan continued to meet the target (100%) all other areas returned 87%.

There are a number of social work posts which have been approved for filling. 148 posts nationally have been approved and are being processed by the National Recruitment Service. This is a significant increase on the previous month (59) when 89 vacancies were approved. This can be broken down by region as follows: 49 in Dublin Mid Leinster (an increase of 25); 47 in Dublin North East (an increase of 23); 26 in the South (an increase of 6) and 26 in the West (an increase of 5). In addition to existing approved vacancies, the absence of 82 (a decrease of 2) social work staff on maternity leave (28 in DML; 23 in DNE; 17 in the South and 14 in the West) is continuing to have a significant impact on the capacity of

some areas to allocate a social worker to all children in care. There are 91 Agency staff (a decrease of 2 on the previous month) employed to cover these 230 vacancies when maternity leaves are included. Due to the additional posts approved for filling, the number of overall social work vacancies has increased by 57 from 173 in the last month. The final staffing ceiling for the Agency is to be agreed with the Department of Children and Youth Affairs.

**Percentage of Children in Care by Care Type with an Allocated Social Worker :
August 2014**



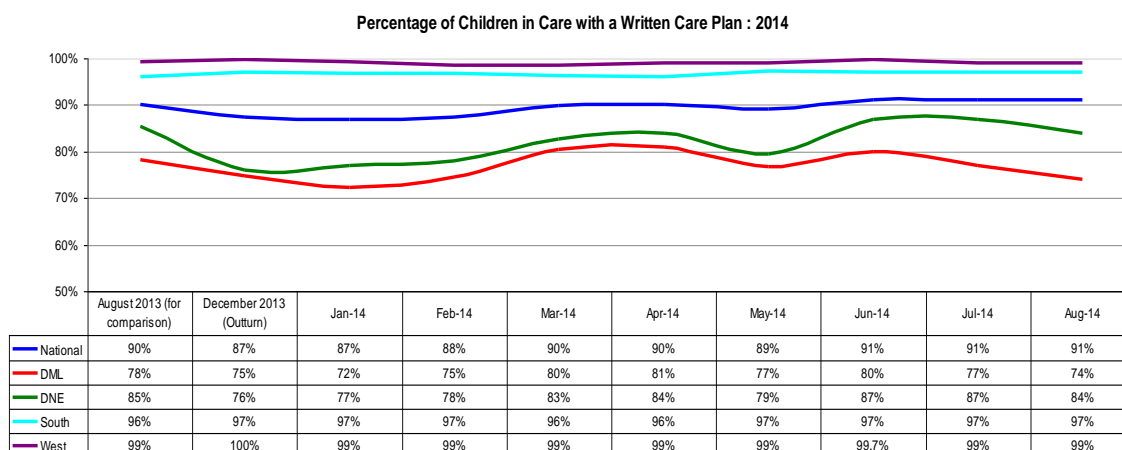
- (i) **No. and % of children in residential special care with an allocated social worker:** 100% (17) of the children in care in residential special care at the end of August had an allocated social worker;
- (ii) **No. and % of children in high support with an allocated social worker:** There were no children in care in a high support placement at the end of August;
- (iii) **No. and % of children in residential general care with an allocated social worker:** 98% (317/324) of the children in care in residential general care at the end of August had an allocated social worker;
- (iv) **No. and % of children in residential out of state secure placements with an allocated social worker:** 100% (6) of the children in care in residential out of state secure placements at the end of August had an allocated social worker;
- (v) **No. and % of children in foster care general with an allocated social worker:** 94% (3,885/4,133) of the children in care in foster care general at the end of August had an allocated social worker;
- (vi) **No. and % of children in foster care with relatives with an allocated social worker:** 91% (1,725/1,893) of the children in care in

foster care with relatives at the end of August had an allocated social worker;

- (vii) **No. and % of children in other care placements with an allocated social worker:** 93% (108/116) of the children in care in other care placements at the end of August had an allocated social worker.

1.3 Number and Percentage of Children in Care with a Written Care Plan

The target for 2014 is that 90% of children in care will have a written care plan. The target of 90% was almost reached for August at 89% (5,759/6489 children). The August performance was up on the December figure of 87%, and equals the August 2013 figure of 89%. However, the overall number of children with an up to date care plan *decreased* in the last month by 115 from 5,874 in July. The overall number of children in care increased by 3 in the



same period and number of children with an allocated social worker decreased by 4.

- DML: 74% (1,144/1,543). Performance was below 70% in Dublin South Central at 69% (269/392) and in Dublin South West/Kildare West Wicklow at 64% (312/486) however this demonstrates an improvement over the May 2014 return of 57% (273/477). The Midlands (94%) exceeded the 90% target.
- DNE: 84% (1,274/1,524). Performance was below 70% in Cavan Monaghan at 51% (93/182). Dublin City North and Louth Meath continually meet the target of 90%.
- South 97% (1,884/1,950). All areas exceeded the target of 90% with Carlow Kilkenny South Tipperary again returning 100%.
- West 99% (1,457/1,472). Mayo and Donegal returned 100% and all the remaining areas exceeded the target.

Vacancies and available staffing in some areas continue to adversely affect performance. This is particularly notable in Dublin South West/Kildare West Wicklow where difficulties will remain without an increase in staffing levels. Cavan/Monaghan has re-assigned two staff to the children in care team from the community child protection team to address these difficulties. 100% of children in care now have an allocated social worker (up from 52% in April). However, difficulties remain in the completion of care plans.

- (i) **No. and % of children in residential special care with a written care plan:** 100% (17) of the children in care in residential special care at the end of August had a written care plan;
- (ii) **No. and % of children in high support with a written care plan:** There were no children in care in a high support placement at the end of August;
- (iii) **No. and % of children in residential general care with a written care plan:** 89% (288/324) of the children in care in residential general care at the end of August had a written care plan;
- (iv) **No. and % of children in residential out of state secure placements with a written care plan:** 100% (6) of the children in care in residential out of state secure placements at the end of August had a written care plan;
- (v) **No. and % of children in foster care general with a written care plan:** 91% (3,681/4,133) of the children in care in foster care general at the end of August had a written care plan;
- (vi) **No. and % of children in foster care with relatives with a written care plan:** 88% (1,666/1,893) of the children in care in foster care with relatives at the end of August had a written care plan;
- (vii) **No. and % of children in other care placements with a written care plan:** 87% (101/116) of the children in care in other care placements at the end of August had a written care plan

Appendix 1: National Performance Scorecard

National Performance Scorecard 2014: <u>August</u>	Data Timing	Outturn 2013	Target or Estimated Activity Levels (EAL) 2014	Performance YTD			Performance this M/Q		
				Target/EAL YTD	Activity YTD	% var Activity YTD v Target/EAL YTD	Target/EAL this Month or Quarter	Actual this Month or Quarter	% var reported activity v Target/EAL this Month or Quarter
Children in Care: Residential and Foster Care	M		Estimated Activity Levels						
The number of children in care overall at the end of the reporting period	M	6,460	6,460	6,460	6,489	0.4%	6,460	6,489	0.4%
The number of children in Residential Special Care at the end of the reporting period	M	25			17			17	
The percentage of children in care in Residential Special Care at the end of the reporting period	M	0.4%	0.4%	0.4%	0.3%	-35%	0.4%	0.3%	-35%
The number of children in Residential High Support at the end of the reporting period	M	7			0			0	
The percentage of children in care in Residential High Support at the end of the reporting period	M	0.1%	0.1%	0.1%	0%	-100%	0.1%	0%	-100%
The number of children in Residential General Care at the end of the reporting period	M	324			324			324	
The percentage of children in care in Residential General Care at the end of the reporting period	M	5.0%	5%	5%	5%	0%	5%	5%	0%

National Performance Scorecard 2014: <u>August</u>	Data Timing	Outturn 2013	Target or Estimated Activity Levels (EAL) 2014	Performance YTD			Performance this M/Q		
				Target/EAL YTD	Activity YTD	% var Activity YTD v Target/EAL YTD	Target/EAL this Month or Quarter	Actual this Month or Quarter	% var reported activity v Target/EAL this Month or Quarter
The number of children in Residential Out of State Secure Placement at the end of the reporting period	M				6			6	
The percentage of children in care in Residential Out of State Secure Placement at the end of the reporting period	M				0.1%			0.1%	
The number of children in Foster Care General at the end of the reporting period	M	4,140			4,133			4,133	
The percentage of children in care in Foster Care General at the end of the reporting period	M	64.1%	64%	64%	64%	0%	64%	64%	0%
The number of children in Foster Care with Relatives at the end of the reporting period	M	1,858			1,893			1,893	
The percentage of children in care in Foster Care with Relatives at the end of the reporting period	M	28.8%	28.8%	28.8%	29%	0%	28.8%	29%	0%
The number of children in Other Care Placements at the end of the reporting period	M	106			116			116	
The percentage of children in care in Other Care Placements at the end of the reporting period	M	1.6%	1.7%	1.7%	2%	5%	1.7%	2%	5%
Children in Care: with an Allocated Social Worker	M								
Number of children in care overall who have an allocated social worker at the end of the reporting period	M	5,933			6,058			6,058	

National Performance Scorecard 2014: <u>August</u>	Data Timing	Outturn 2013	Target or Estimated Activity Levels (EAL) 2014	Performance YTD			Performance this M/Q		
				Target/EAL YTD	Activity YTD	% var Activity YTD v Target/EAL YTD	Target/EAL this Month or Quarter	Actual this Month or Quarter	% var reported activity v Target/EAL this Month or Quarter
% children in care overall who have an allocated social worker at the end of the reporting period	M	91.8%	100%	100%	93%	-7%	100%	93%	-7%
Number of children in Residential Special Care who have an allocated social worker at the end of the reporting period	M	25			17			17	
The percentage of children in Residential Special Care with an Allocated Social Worker at the end of the reporting period	M	100%	100%	100%	100%	0%	100%	100%	0%
Number of children in Residential High Support who have an allocated social worker at the end of the reporting period	M	7			0			0	
The percentage of children in Residential High Support with an Allocated Social Worker at the end of the reporting period	M	100%	100%	100%	N/A	N/A	100%	N/A	N/A
Number of children in Residential General Care who have an allocated social worker at the end of the reporting period	M	313			317			317	
The percentage of children in Residential General Care with an Allocated Social Worker at the end of the reporting period	M	96.6%	100%	100%	98%	-2%	100%	98%	-2%
Number of children in Residential Care Out of State Secure Placement who have an allocated social worker at the end of the reporting period	M				6			6	
The percentage of children in Residential Care Out of State Secure Placement who have an allocated social worker at the end of the reporting period	M		100%	100%	100%	0%	100%	100%	0%

National Performance Scorecard 2014: <u>August</u>	Data Timing	Outturn 2013	Target or Estimated Activity Levels (EAL) 2014	Performance YTD			Performance this M/Q		
				Target/EAL YTD	Activity YTD	% var Activity YTD v Target/EAL YTD	Target/EAL this Month or Quarter	Actual this Month or Quarter	% var reported activity v Target/EAL this Month or Quarter
Number of children in Foster Care General who have an allocated social worker at the end of the reporting period	M	3,823			3,885			3,885	
The percentage of children in Foster Care General with an Allocated Social Worker at the end of the reporting period	M	92.3%	100%	100%	94%	-6%	100%	94%	-6%
Number of children in Foster Care with Relatives who have an allocated social worker at the end of the reporting period	M	1,661			1,725			1,725	
The percentage of children in Foster Care with Relatives with an Allocated Social Worker at the end of the reporting period	M	89.4%	100%	100%	91%	-9%	100%	91%	-9%
Number of children in Other Care Placements who have an allocated social worker at the end of the reporting period	M	104			108			108	
The percentage of children in Other Care Placements with an Allocated Social Worker at the end of the reporting period	M	98.1%	100%	100%	93%	-7%	100%	93%	-7%
Children in Care: With a Written Care Plan	M								
Number of children in care overall who have an a written care plan at the end of the reporting period	M	5,646			5,759			5,759	
% children in care who currently have a written care plan at the end of the reporting period	M	87.4%	90%	90%	91%	1%	90%	91%	1%

National Performance Scorecard 2014: August	Data Timing	Outturn 2013	Target or Estimated Activity Levels (EAL) 2014	Performance YTD			Performance this M/Q		
				Target/EAL YTD	Activity YTD	% var Activity YTD v Target/EAL YTD	Target/EAL this Month or Quarter	Actual this Month or Quarter	% var reported activity v Target/EAL this Month or Quarter
Number of children in Residential Special Care who have a written care plan at the end of the reporting period	M	25			17			17	
The percentage of children in Residential Special Care who currently have a written care plan at the end of the reporting period	M	100%	100%	100%	100%	0%	100%	100%	0%
Number of children in Residential High Support who have a written care plan at the end of the reporting period	M	7			0			0	
The percentage of children in Residential High Support who currently have a written care plan at the end of the reporting period	M	100.0%	90%	90%	N/A	N/A	100%	N/A	N/A
Number of children in Residential General Care who have a written care plan at the end of the reporting period	M	279			288			288	
The percentage of children in Residential General Care who currently have a written care plan at the end of the reporting period	M	86.1%	90%	90%	89%	-1%	90%	89%	-1%
Number of children in Residential Care Out of State Secure Placement who currently have a written care plan at the end of the reporting period	M				6			6	
The percentage of children in Residential Care Out of State Secure Placement who currently have a written care plan at the end of the reporting period	M		100%	100%	100%	0%	100%	100%	0%

National Performance Scorecard 2014: <u>August</u>	Data Timing	Outturn 2013	Target or Estimated Activity Levels (EAL) 2014	Performance YTD			Performance this M/Q		
				Target/EAL YTD	Activity YTD	% var Activity YTD v Target/EAL YTD	Target/EAL this Month or Quarter	Actual this Month or Quarter	% var reported activity v Target/EAL this Month or Quarter
Number of children in Foster Care General who have a written care plan at the end of the reporting period	M	3,660			3,681			3,681	
The percentage of children in Foster Care General who currently have a written care plan at the end of the reporting period	M	88.4%	90%	90%	89%	-1%	90%	89%	-1%
Number of children in Foster Care with Relatives who have a written care plan at the end of the reporting period	M	1,585			1,666			1,666	
The percentage of children in Foster Care with Relatives who currently have a written care plan at the end of the reporting period	M	85.3%	90%	90%	88%	-2%	90%	88%	-2%
Number of children in Other Care Placements who have a written care plan at the end of the reporting period	M	90			101			101	
The percentage of children in Other Care Placements who currently have a written care plan at the end of the reporting period	M	84.9%	90%	90%	87%	-73%	90%	87%	-3%

Appendix 2: Schedule of Metric Reporting 2014

Schedule of Metric Reporting 2014.	Data Timing
Early Years Services	
Number of early years services which received an annual or first inspection	Q
Percentage of early years services which received an annual or first inspection	Q
Number of notified full day early years service in operational areas	Q
Number of notified full day early years service in operational areas which received an annual or first inspection	Q
Percentage of full day early years services which received an annual or first inspection	Q
Number of early years services complaints received	Q
Percentage of complaints investigated	Q
Number of prosecutions taken of early years services during the reporting period (note rewording for clarity)	Q
Number of early years services which received an annual or first inspection	Q
Family Support Services	
The number of children referred to FSS by Social Work during the reporting period	Bi- Annual (Q2 & Q4)
The number of Families referred to FSS by Social Work during the reporting period	Bi- Annual (Q2 & Q4)
The number of children referred to FSS by Other Sources during the reporting period	Bi- Annual (Q2 & Q4)
The number of Families referred to FSS by Other Sources during the reporting period	Bi- Annual (Q2 & Q4)
The number of children in receipt of FSS at the end of the reporting period	Bi- Annual (Q2 & Q4)
The number of families in receipt of FSS at the end of the reporting period	Bi- Annual (Q2 & Q4)
Educational Welfare	
Number of children/families supported by Education Welfare Service interventions (statutory obligations) to address general school attendance/placement issues	Annual (Q4)
Number of children/families supported by Education Welfare Service interventions (statutory obligations) to address serious/chronic school attendance issues	Annual (Q4)
Children in Care in Education	
The number of children in care aged 6 to 16 inclusive (at the end of the reporting period)	Q
The number of children in care aged 6 to 16 inclusive (at the end of the reporting period) in full time education	Q
The percentage of children in care aged 6 to 16 inclusive (at the end of the reporting period) in full time education	Q
The number of children in care aged 17 (at the end of the reporting period)	Q
The number of children in care aged 17 (at the end of the reporting period) in full time education	Q
The percentage of children in care aged 17 (at the end of the reporting period) in full time education	Q
Children in Care: Residential and Foster Care	
The number of children in care overall at the end of the reporting period	M
The number of children in Residential Special Care at the end of the reporting period	M
The percentage of children in care in Residential Special Care at the end of the reporting period	M

Schedule of Metric Reporting 2014.	Data Timing
The number of children in Residential High Support at the end of the reporting period	M
The percentage of children in care in Residential High Support at the end of the reporting period	M
The number of children in Residential General Care at the end of the reporting period	M
The percentage of children in care in Residential General Care at the end of the reporting period	M
The number of children in Foster Care General at the end of the reporting period	M
The percentage of children in care in Foster Care General at the end of the reporting period	M
The number of children in Foster Care with Relatives at the end of the reporting period	M
The percentage of children in care in Foster Care with Relatives at the end of the reporting period	M
The number of children in Other Care Placements at the end of the reporting period	M
The percentage of children in care in Other Care Placements at the end of the reporting period	M
Children in Care: with an Allocated Social Worker	
Number of children in care overall who have an allocated social worker at the end of the reporting period	M
% children in care overall who have an allocated social worker at the end of the reporting period	M
Number of children in Residential Special Care who have an allocated social worker at the end of the reporting period	M
The percentage of children in Residential Special Care with an Allocated Social Worker at the end of the reporting period	M
Number of children in Residential High Support who have an allocated social worker at the end of the reporting period	M
The percentage of children in Residential High Support with an Allocated Social Worker at the end of the reporting period	M
Number of children in Residential General Care who have an allocated social worker at the end of the reporting period	M
The percentage of children in Residential General Care with an Allocated Social Worker at the end of the reporting period	M
Number of children in Foster Care General who have an allocated social worker at the end of the reporting period	M
The percentage of children in Foster Care General with an Allocated Social Worker at the end of the reporting period	M
Number of children in Foster Care with Relatives who have an allocated social worker at the end of the reporting period	M
The percentage of children in Foster Care with Relatives with an Allocated Social Worker at the end of the reporting period	M
Number of children in Other Care Placements who have an allocated social worker at the end of the reporting period	M
The percentage of children in Other Care Placements with an Allocated Social Worker at the end of the reporting period	M
Children in Care: With a Written Care Plan	
Number of children in care overall who have an a written care plan at the end of the reporting period	M
% children in care who currently have a written care plan at the end of the reporting period	M
Number of children in Residential Special Care who have a written care plan at the end of the reporting period	M
The percentage of children in Residential Special Care who currently have a written care plan at the end of the reporting period	M
Number of children in Residential High Support who have a written care plan at the end of the reporting period	M

Schedule of Metric Reporting 2014.	Data Timing
The percentage of children in Residential High Support who currently have a written care plan at the end of the reporting period	M
Number of children in Residential General Care who have a written care plan at the end of the reporting period	M
The percentage of children in Residential General Care who currently have a written care plan at the end of the reporting period	M
Number of children in Foster Care General who have a written care plan at the end of the reporting period	M
The percentage of children in Foster Care General who currently have a written care plan at the end of the reporting period	M
Number of children in Foster Care with Relatives who have a written care plan at the end of the reporting period	M
The percentage of children in Foster Care with Relatives who currently have a written care plan at the end of the reporting period	M
Number of children in Other Care Placements who have a written care plan at the end of the reporting period	M
The percentage of children in Other Care Placements who currently have a written care plan at the end of the reporting period	M
Foster Carers	
The total number of Foster carers General and Relative approved and on the Foster Care Panel (Part III Regs)	Q
The number of relative foster carers not approved at the end of the reporting period	Q
The number of relative foster carers where children have been placed for longer than 12 weeks whilst the foster carers are awaiting approval by the foster care panel (part III of Regs)	Q
The percentage of relative foster carers where children have been placed for longer than 12 weeks whilst the foster carers are awaiting approval by the foster care panel (part III of Regs)	Q
The number of relative foster carers not approved at the end of the reporting period who have a child placed with them (longer than 12 weeks) and have an allocated social worker	Q
The % of relative foster carers not approved at the end of the reporting period who have a child placed with them (longer than 12 weeks) and have an allocated social worker	Q
The number of relative foster carers not approved at the end of the reporting period who have a child placed with them (longer than 12 weeks) and DO NOT have an allocated social worker	Q
The % of relative foster carers not approved at the end of the reporting period who have a child placed with them (longer than 12 weeks) and DO NOT have an allocated social worker	Q
After Care	
The number of young adults aged 18 to 23 (inclusive) in receipt of an aftercare service on the last day of the reporting period	Q
The number of young adults aged 18 to 23 (inclusive) in receipt of an aftercare service on the last day of the reporting period who are in full time education	Q
The percentage of young adults aged 18 to 23 (inclusive) in receipt of an aftercare service who are in full time education on the last day of the reporting period	Q
The number of young adults aged 18 to 20 (inclusive) in receipt of an aftercare service on the last day of the reporting period	Q
The number of young adults aged 18 to 20 (inclusive) in receipt of an aftercare service on the last day of the reporting period who are in full time education	Q
The percentage of young adults aged 18 to 20 (inclusive) in receipt of an aftercare service who are in full time education on the last day of the reporting period	Q
Child Welfare	
The number of referrals of a child welfare concern	Q (In arrears)
The number of referrals of child welfare concerns where a preliminary enquiry took place within 24 hours	Q (In arrears)
The percentage of referrals of child welfare concerns where a preliminary enquiry took place within 24 hours	Q (In arrears)
The number of preliminary enquiries held (welfare concern referrals)	Q (In arrears)

Schedule of Metric Reporting 2014.	Data Timing
The number of referrals of child welfare concerns which required an initial assessment following a preliminary enquiry	Q (In arrears)
The percentage of referrals of child welfare concerns which required an initial assessment following a preliminary enquiry	Q (In arrears)
The number of initial assessments completed within 21 days of receipt of the referral	Q (In arrears)
The percentage of initial assessments completed within 21 days of receipt of the referral	Q (In arrears)
Of the total number of child welfare concerns received during the reporting period that had an initial assessment; how many were recorded with an action: child protection	Q (In arrears)
Percentage of the total number of child welfare concerns received during the reporting period that had an initial assessment that were recorded with an action: child protection	Q (In arrears)
Child Protection: Abuse referrals	
The number of referrals of child abuse	Q (In arrears)
The number of referrals of child abuse where a preliminary enquiry took place within 24 hours	Q (In arrears)
The percentage of referrals of child abuse where a preliminary enquiry took place within 24 hours	Q (In arrears)
The number of preliminary enquiries held (abuse referrals)	Q (In arrears)
The number of referrals of child abuse which required an initial assessment following a preliminary enquiry	Q (In arrears)
The percentage of referrals of child abuse which required an initial assessment following a preliminary enquiry	Q (In arrears)
The number of initial assessments completed within 21 days of receipt of the referral	Q (In arrears)
The percentage of initial assessments completed within 21 days of receipt of the referral	Q (In arrears)
Of the total number of child abuse received during the reporting period that had an initial assessment; how many were recorded with an action: child protection	Q (In arrears)
Percentage of the total number of child abuse received during the reporting period that had an initial assessment that were recorded with an action: child protection	Q (In arrears)
Child Protection: CPNS Listing	
The total number of children at the end of the reporting period who are currently listed as ACTIVE on the CPNS. (note: all children not just those listed during the quarter)	Q
Crisis Intervention Services CIS (Dublin, Kildare, Wicklow)	
Number of referrals made to the Crisis Intervention Service	Q
Number of children placed with the Crisis Intervention Service	Q
Out of Hours (excludes Dublin, Kildare, Wicklow)	
Number of referrals made to the Emergency Out of Hours Place of Safety Service	Q
Number of children placed with the Emergency Out of Hours Placement Service	Q
The total number of nights accommodation supplied by the Emergency Out of Hours Place of Safety Service	Q
Adoption	
Projected waiting time for assessment (i.e. from waiting list to the beginning of preparation) : Inter Country Adoption	Q
Total number of completed assessments during the reporting period : Inter Country Adoption	Q
Total number of completed assessments during the reporting period : Domestic Adoption	Q
Total number of Fostering to Adoption Assessments during the reporting period ; Domestic Adoption	
The number on waiting lists : Information & Tracing Services	Q

Schedule of Metric Reporting 2014.	Data Timing
Average length of time from waiting list to allocation: Information & Tracing Services	Q
Key: Q = Reported Quarterly (March; June; September; December); Bi-Annual = Reported twice in the year Q2 (June) and Q4 (December); M = reported Monthly January to December: Annual = Reported in Q4 (December)	