

### The types of Personal Data processed:

Identification data: name, age, gender and contact details.

Information on family, lifestyle, personal and social circumstances.

Health, welfare and information relating to the child sexual abuse.

### Depending on the circumstances, the following Personal Data may also be processed;

Education, employment, immigration and financial Information.

Information on racial and ethnic origin, religion or political opinions.

Data relating to criminal convictions, offences or court orders.

### Information may be shared with:

An Garda Síochána (AGS).

Health Service Executive (HSE) and health care professionals.

Child advocate.

Guardian ad Litem.

Interpreter (as required).

External intermediary, who assist with communicating with the justice system so that children and young people understand and are understood.

External services involved with the child and family.

Community and voluntary organisation services.

If necessary, Social Worker for the Child Abuse Substantiation Procedure (CASP).

## Purpose and legal basis

Our purpose for processing personal data is to provide Barnahus services to children and young people.

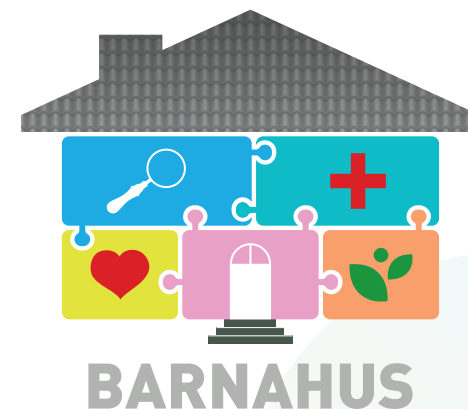
We rely on the following legal basis for processing personal data:

- Necessary for compliance with a legal obligation to which Tusla is subject, most notably section 8 of the Child and Family Agency Act, 2013.
- The performance of tasks carried out in the public interest or in the exercise of Tusla's official authority.

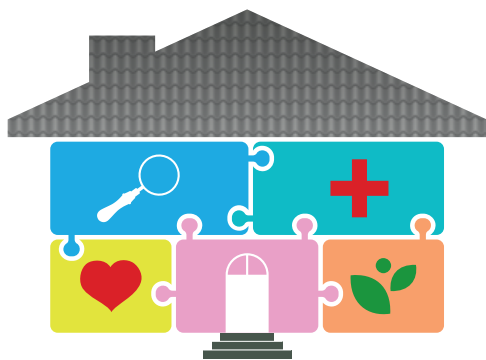
We rely on the following legal basis for processing special category data:

- Necessary for the purposes of the provision of health, social care, or treatment.

**Data Protection Rights:** All individuals have legal rights in relation to their own personal data. For further information or to exercise your rights please see the main Tusla Data Protection Notice available at [tusla.ie](https://tusla.ie).



## DATA PROTECTION NOTICE



## Introduction...

Barnahus is the leading European model of a child-friendly multidisciplinary response to integrate health, medical, child protection, therapeutic, and policing services for children and adolescents where there is a concern of, or disclosure of child sexual abuse. Barnahus aims to improve Ireland's interagency response to child sexual exploitation and abuse. Barnahus is delivered by **Tusla, An Garda Síochána (AGS) and the Health Services Executive (HSE).**

When Tusla have concerns that a child may have experienced child sexual abuse, Tusla will refer the child, with parental agreement to Barnahus. The interagency partners come together to co-ordinate a response for the child and agree on the next steps.

The Barnahus process looks like ➡ which can include:

- A medical examination to support the child's physical and mental well-being recovery, while also used for forensic investigative purposes.
- Specialist forensic interview to facilitate the submission of pre-recorded video evidence from a child victim as court evidence and to avoid re-interviewing of the child. Working together, the social workers and Gardaí are specially trained to communicate with children who have experienced trauma to get the best quality information from them in a child friendly way. Interviewers will meet with the parent/guardian and child before the interview occurs.
- A therapeutic screening and assessment to determine what therapy the child or family could benefit from. Therapy can be offered at Barnahus as a short-term intervention or we will work with you and your child to identify services in your locality.

Barnahus processes can be summarised as...

